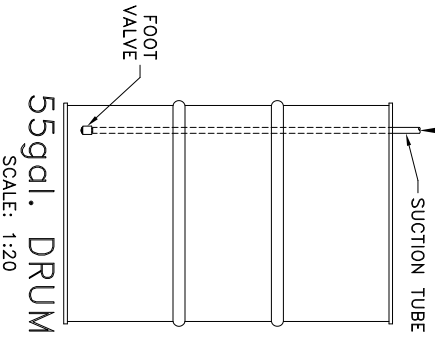
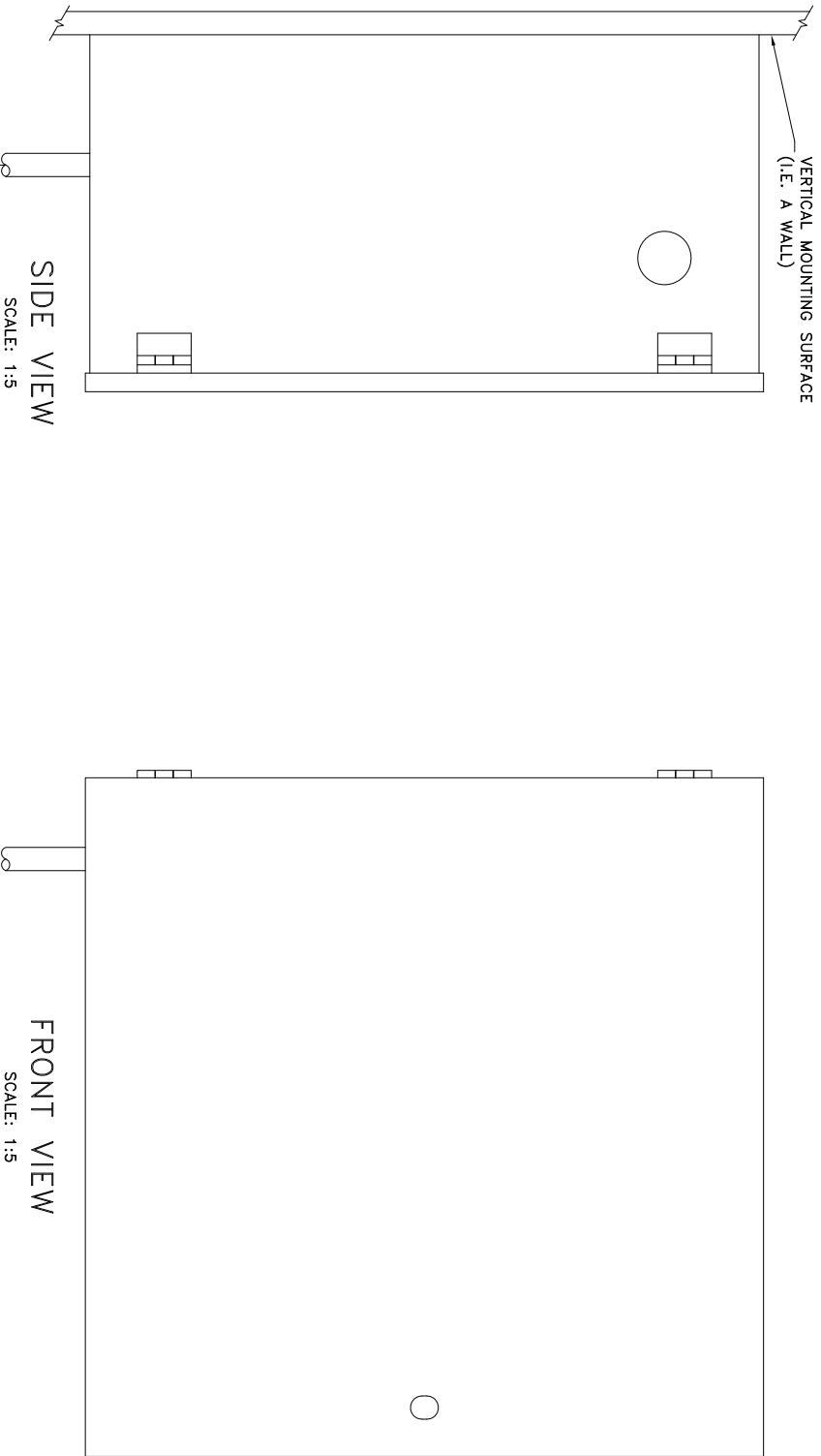


NOTE: HYDRO-BLEND VERTICAL MOUNT SYSTEM PART NUMBERS CONTAIN THE ABBREVIATION "VM"  
 THIS ABBREVIATION DENOTES THE SYSTEMS MOUNTING ORIENTATION (SEE PACKING SLIP FOR PUMP NUMBER)

**VM = VERTICAL MOUNT - DESIGNED TO MOUNT ON A VERTICAL SURFACE (I.E. A WALL)**



SCALE:	SHEET:	DATE:
NOTED	1 of 1	06/04/07
DRAWN BY:	CHECKED BY:	
SC	DK	
SERIES:	DESCRIPTION:	
REVISION:	REvised BY:	DATE:
	SC	03/24/08

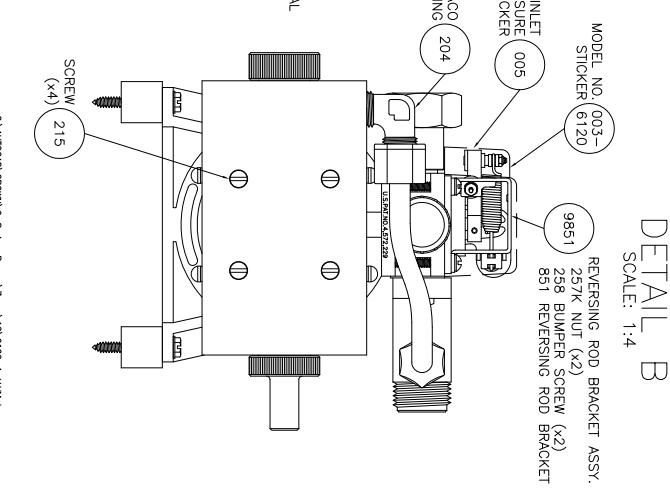
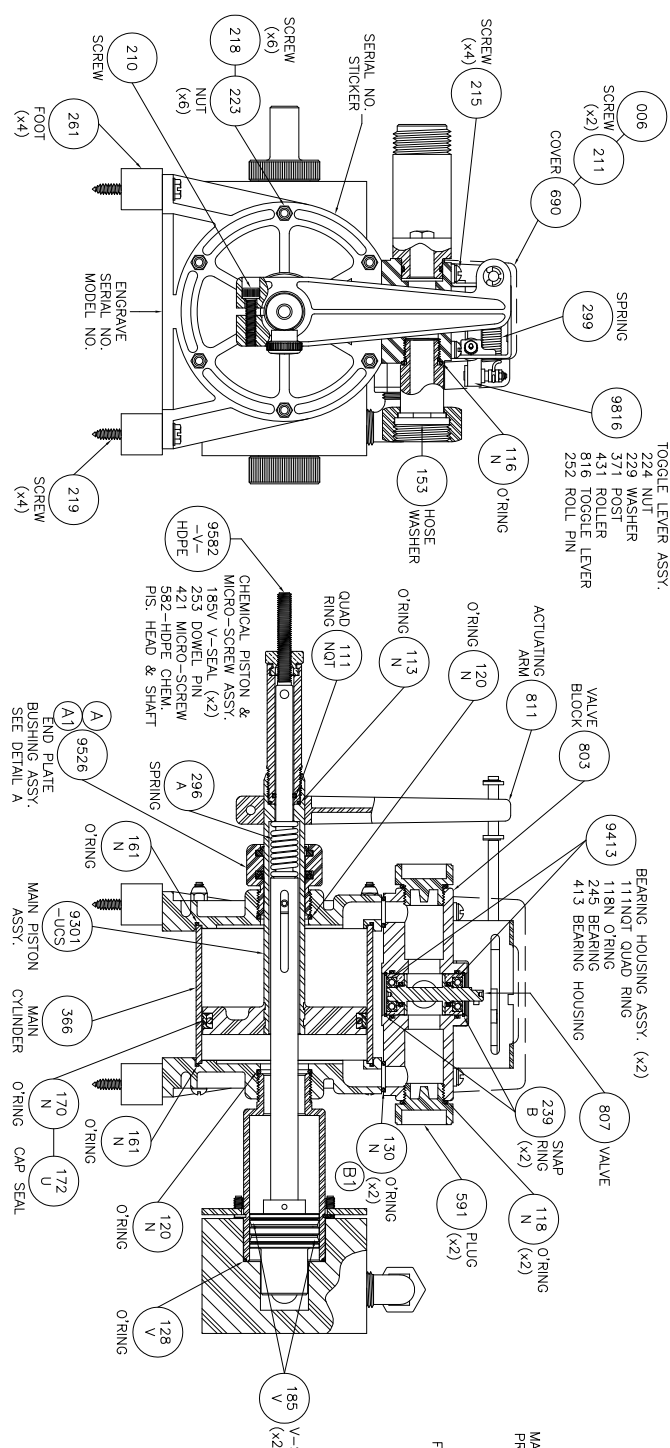
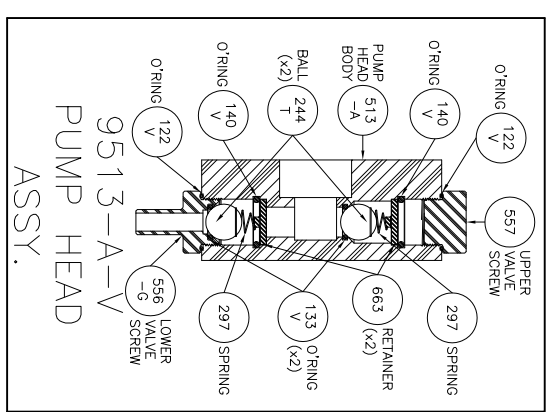
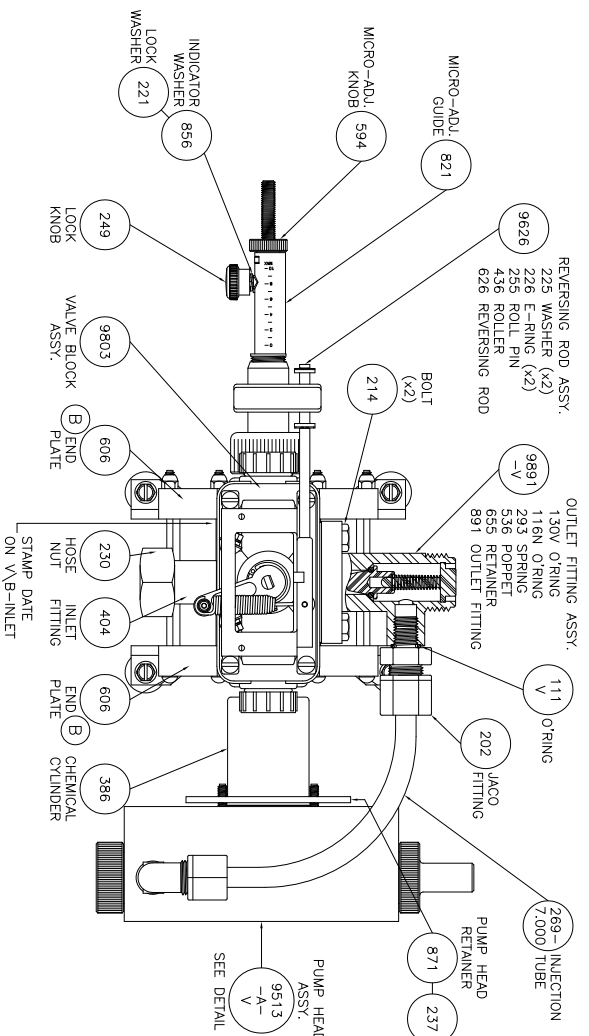
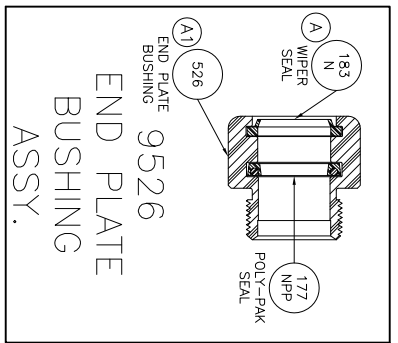
C:\AUTOCAD\GROWIN\Paper\Wall Mounting -Instructions\System-VM-Mounting-Instructions.dwg



5301 SAWYER AVENUE BOISE, ID 83714  
 PHONE: (208) 375-5000 www.hydroblend.com

**MOUNTING INSTRUCTIONS  
 SYSTEM-VERTICAL MOUNT**





DETAIL A  
SCALE: 1:2

DETAIL B  
SCALE: 1:4

REVISION:

- A WAS 178N DOUBLE LIP WIPER, 03/25/02.
- A1 WIPER SEAL GROOVE DIM. CHANGE, 03/25/02.
- B ADDED O-RING COUNTER BORE TO TOP OF ENDPLATE, 10/17/07.
- B1 WAS 112N O-RING, 10/17/07.

SHIPPING INFORMATION:

- LARGE BOX = 001-2
- TOP INSERT = 001-2A
- MIDDLE INSERT = 001-2B
- BOTTOM INSERT = 001-2C
- HYDRO-BLEND STAMP LOGO
- MODEL NO. SERIAL NO. STOKER LOWER LEFT HAND CORNER OF BOX

TUBE WEIGHT NO. = 402-500

- SUCTION TUBE NO. = 267
- OPERATING MANUAL REQUIRED
- PUMP SCHEMATIC REQUIRED

SCALE:	1:3.5	SHEET:	1 of 1	DATE:	12/14/98
DESIGNER:	SC	CHECKED BY:	DK	DATE:	07/18/11
REVISION:	B1	REVISION BY:	SC	DATE:	
DESCRIPTION:	7 GPM				



5301 SAWYER AVENUE BOISE, ID 83714  
PHONE: (208) 375-5000 www.hydroblend.com

6120-A-V, VM

C:\AUTOCAD\PROGRAMS-Service\pump\7mm\1216120-A-V.MXD