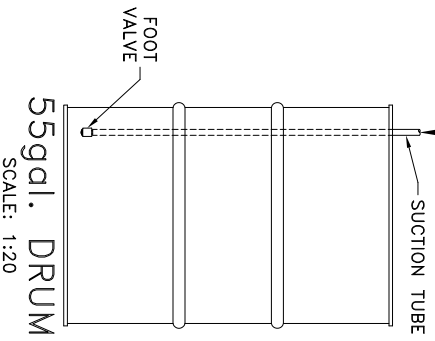
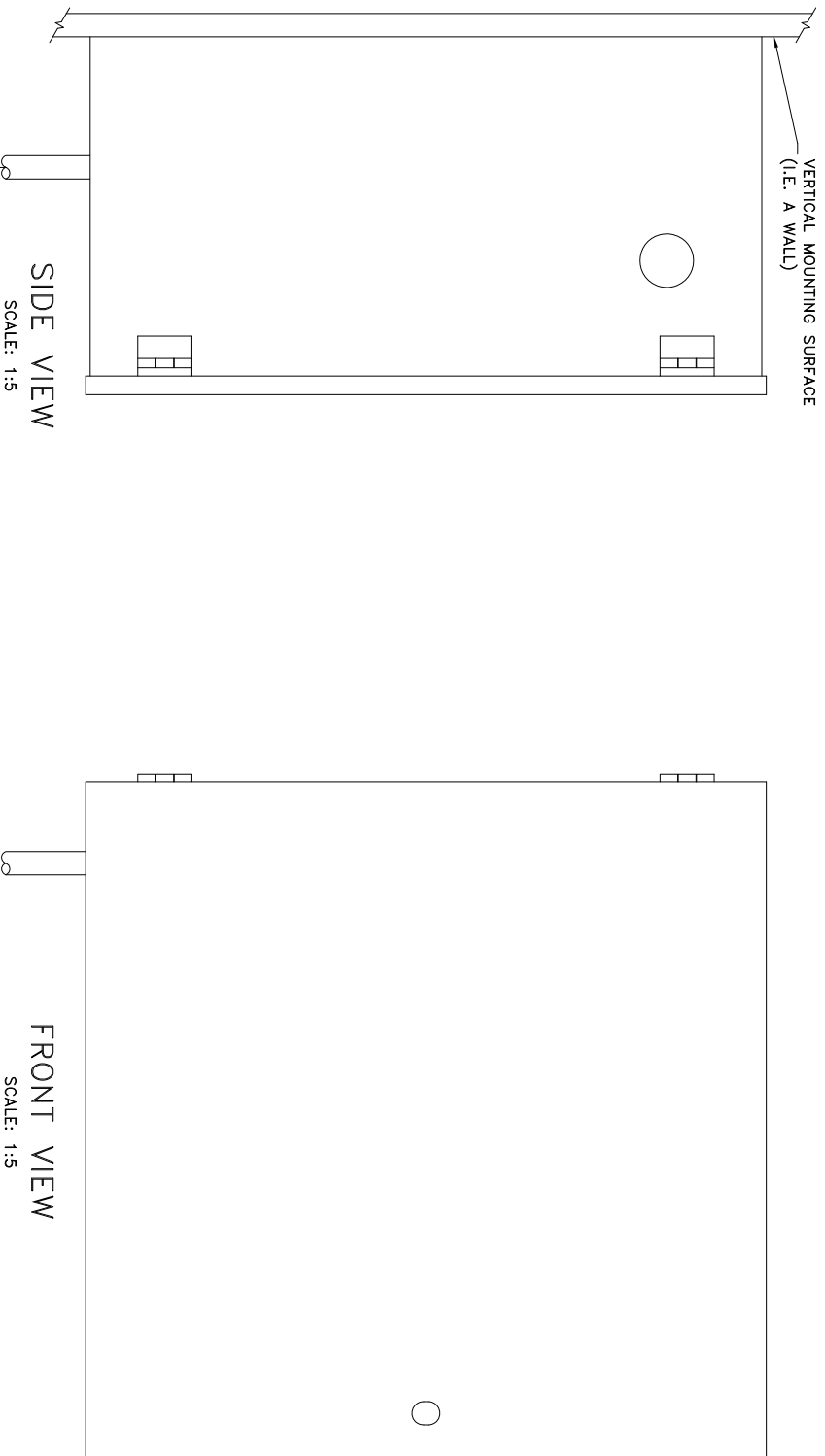


NOTE: HYDRO-BLEND VERTICAL MOUNT SYSTEM PART NUMBERS CONTAIN THE ABBREVIATION "VM"
 THIS ABBREVIATION DENOTES THE SYSTEMS MOUNTING ORIENTATION (SEE PACKING SLIP FOR PUMP NUMBER)

VM = VERTICAL MOUNT - DESIGNED TO MOUNT ON A VERTICAL SURFACE (I.E. A WALL)



FRONT VIEW
SCALE: 1:5

SIDE VIEW
SCALE: 1:5

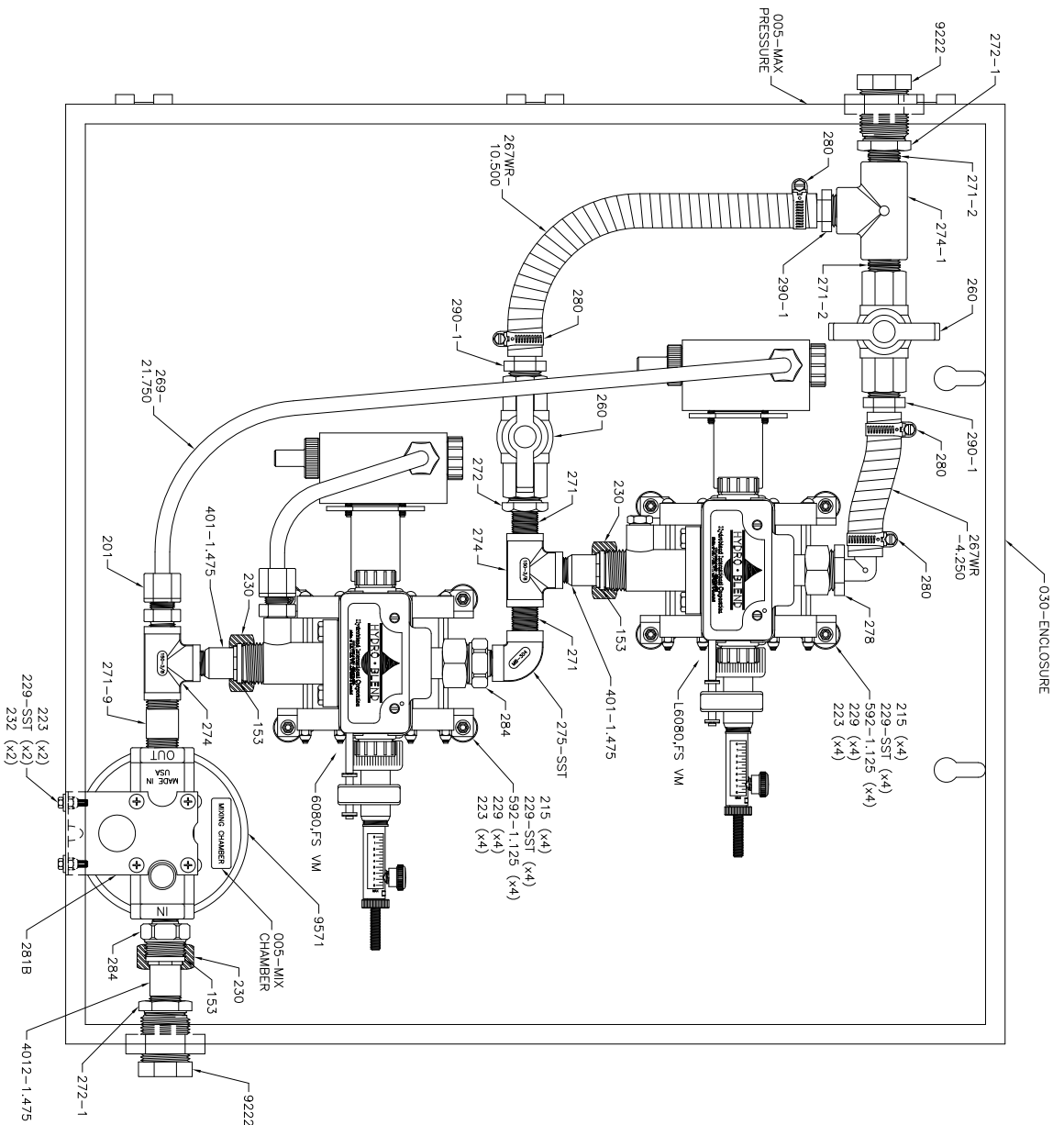
SCALE:	SHEET:	DATE:
NOTED	1 of 1	06/04/07
DRAWN BY:	CHECKED BY:	
SC	DK	
SERIES:	DESCRIPTION:	
REVISION:	REvised BY:	DATE:
	SC	03/24/08

C:\AUTOCAD\CROWN Paper\Wall Mounting -Instructions\System-VM-Mounting-Instructions.dwg



5301 SAWYER AVENUE BOISE, ID 83714
 PHONE: (208) 375-5000 www.hydroblend.com

MOUNTING INSTRUCTIONS
 SYSTEM-VERTICAL MOUNT



REVISION:

SHIPPING INFORMATION:
 SYSTEM BOX = 001-10
 FOAM PACKAGED (30 x 30 x 20)
 HYDRO-BLEND STAMP LOGO
 MODEL NO. SERIAL NO. STICKER
 LOWER LEFT HAND CORNER OF BOX

FOOT VALVE NO. = 9402-375 (x2)
 SUCTION TUBE NO. = 266 (x2)
 OPERATING MANUAL REQUIRED
 PUMP SCHEMATIC REQUIRED
 SYSTEM SCHEMATIC REQUIRED

PART NO.	DESCRIPTION	QTY.
005-MAX PRESSURE	Sticker - Water Inlet - Maximum Inlet Pressure	1
005-MIX CHAMBER	Sticker - Mixing Chamber	1
030-ENCLOSURE	Enclosure - 24.0 x 24.0 x 9.500 - SST	1
153	Hose Washer - 3/4-GHT - Red Vinyl	3
201	Jaco Male Connector - 3/8 Tube OD - 3/8 MNPT - Polypro	1
215	Screw - 8-32 x 1-3/4 - Round Head SLTD - 18-8 SST	8
223	Nut - Acorn Open End - Wd 5/16 x Ht 1/4 - 8-32 - Nickel Plated Brass	10
229	Washer - .174 ID x 3/8 OD x .031 Thick - SST	8
229-SST	Washer - .187 ID x .437 OD x .062 Thick - SST	10
230	Nut - Garden Hose - Wd 1-1/4 x Ht .630 - 3/4-11.5 NH - Electroless Nickel Plated Brass	3
232	Bolt - 8-32 x 5/8 - Hex Head - 18-8 SST	2
260	Ball Valve - 1/2 FNPT - SCH 80 - PVC	2
267WR-4.250	Wire Reinforced Hose	1
267WR-10.500	Wire Reinforced Hose	1
269-21.750	Injection Tube	1
271	Nipple - 3/8 MNPT - 1.0 Long - SST	2
271-2	Nipple - 1/2 MNPT - 1.0 Long - SST	2
271-9	Nipple - 3/8 MNPT - 2.0 Long - SST	1
	Reducer - 1/2 MNPT x 3/8 FNPT - SST	1
	Reducer - 3/4 MNPT x 1/2 FNPT - SST	2
	Tee - 3/8 FNPT x 3/8 FNPT x 3/8 FNPT - SST	2
	Tee - 1/2 FNPT x 1/2 FNPT x 1/2 FNPT - Sch 80 PVC	1
	Barb Fitting - 90 Degree - 3/4 MGHT x 1/2 HB - Polypro	1
278	Hose Clamp - SAE #8 - SST	4
	Mounting Bracket - Ametek Filter Housing	1
	Barb Fitting - Straight - 1/2 MNPT x 1/2 HB - Polypro	3
	Spacer - Acetal	2
592-1.125	Spacer - Acetal	8
4012-1.475	Hydro-Blend Proportioner	1
6080.FS VM	Hydro-Blend Proportioner	1
L6080.FS VM	Hydro-Blend Proportioner	1
9222	Mixing Chamber an	2
9571	Mixing Chamber an	1
LOCK		1

SCALE: 1:4.5 SHEET: 1 of 1 DATE: 12/03/08

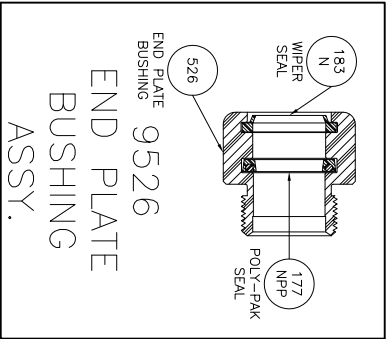
DESIGNER: SC CHECKED BY: DK

REVISION: 7 GPM DESCRIPTION: 030-SYSTEM DATE: 02/14/13

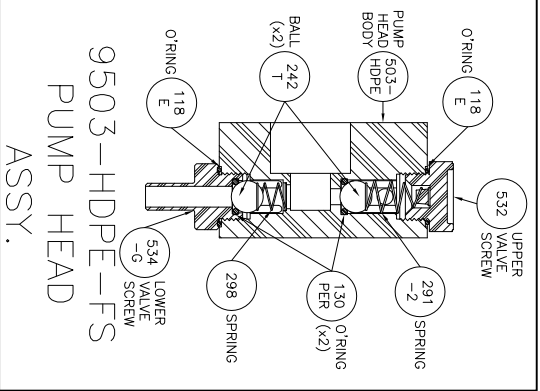
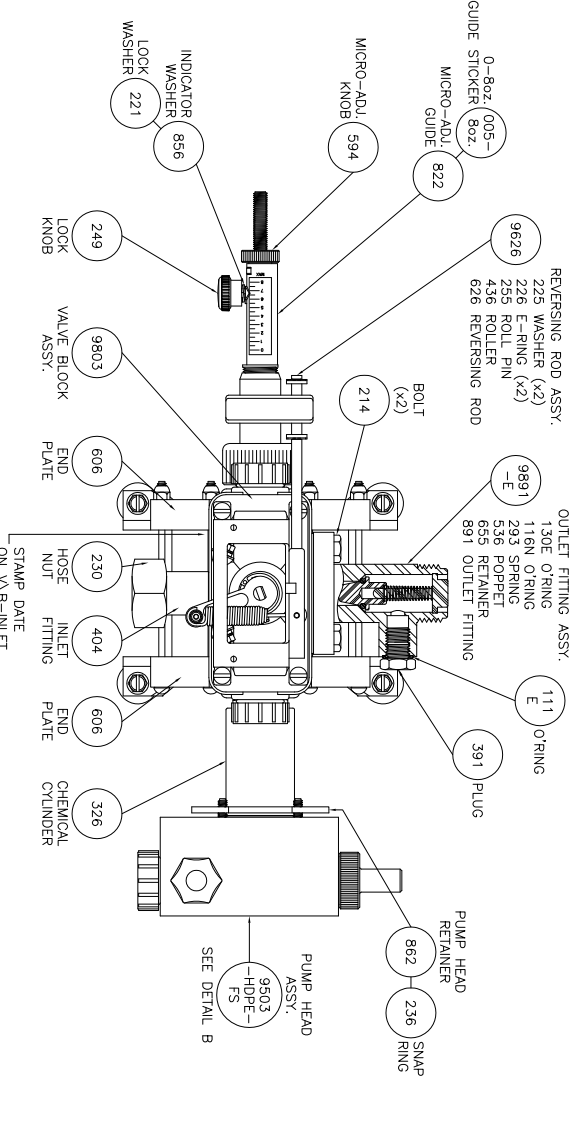
5301 SAWYER AVENUE BOISE, ID 83714
 PHONE: (208) 375-5000 www.hydroblend.com

HYDRO-BLEND
 030-L6080.FS
 /6080.FS VM

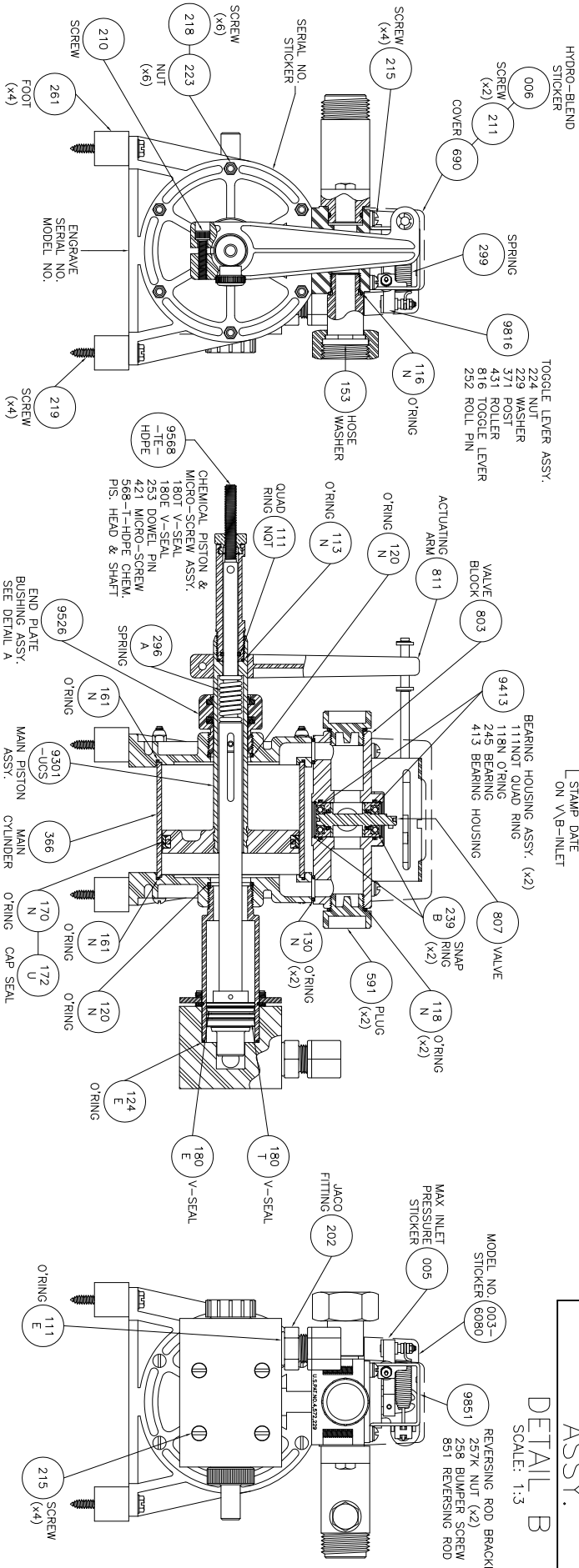
© AutoCAD/VectorWorks Systems Ltd.-16080.FS-6080.FS VM.dwg



DETAIL A
SCALE: 1:2



DETAIL B
SCALE: 1:3



PS=FOUNTAIN SOLUTIONS
REVISION:

SHIPPING INFORMATION:
LARGE BOX = 001-2
TOP INSERT = 001-2A
MIDDLE INSERT = 001-2B
BOTTOM INSERT = 001-2C
HYDRO-BLEND STAMP LOGO
MODEL NO. SERIAL NO. STICKER
LOWER LEFT HAND CORNER OF BOX

FOOT VALVE NO. = 9402-375
SUCTION TUBE NO. = 266
OPERATING MANUAL REQUIRED
PUMP SCHEMATIC REQUIRED

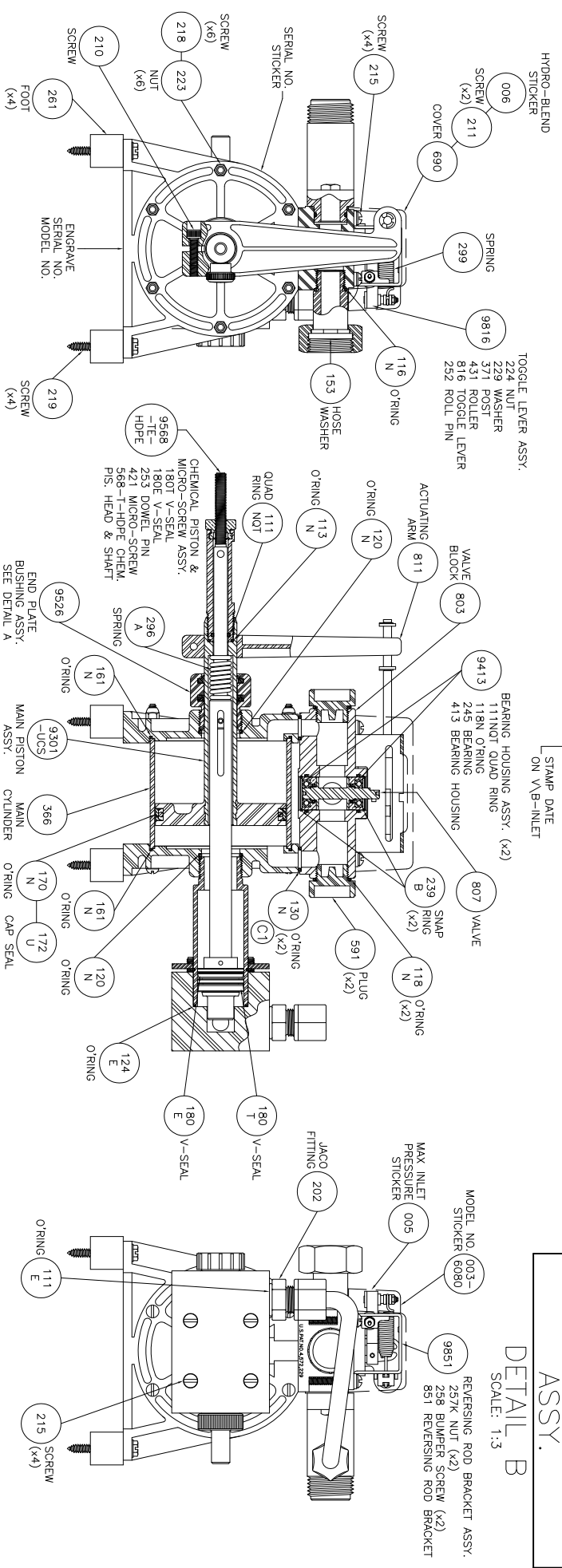
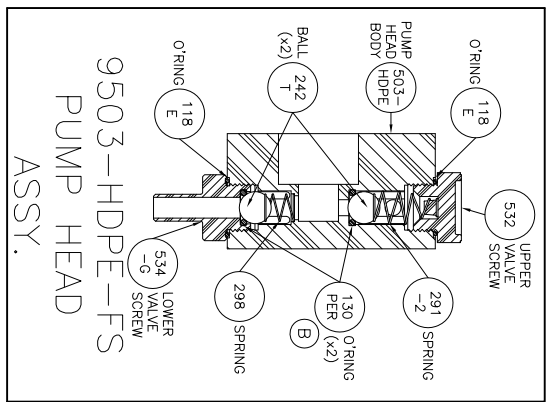
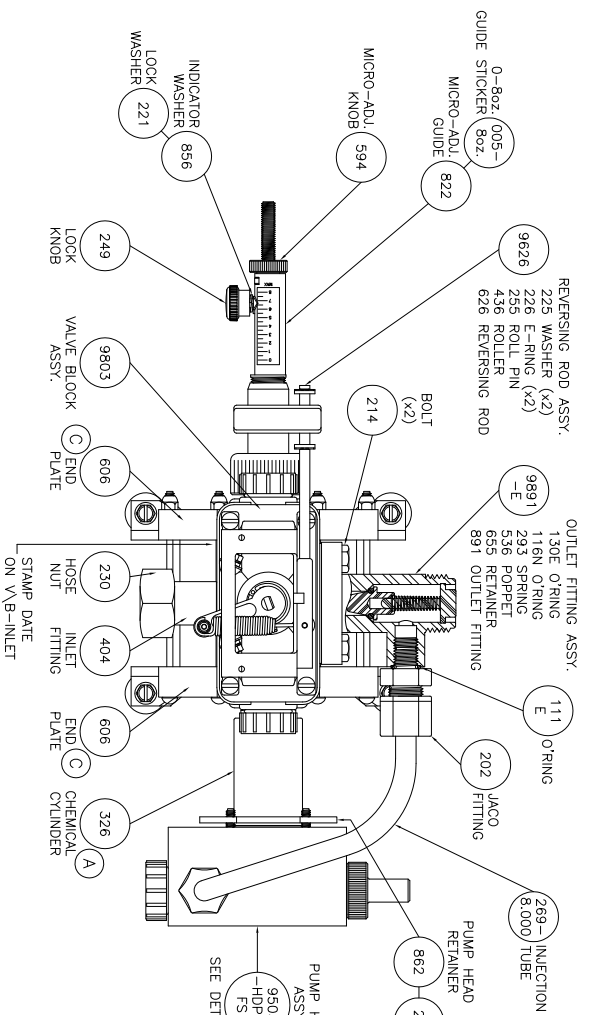
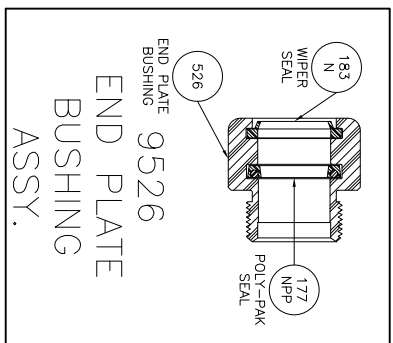
SCALE:	1:3.5	SHEET:	1 of 1	DATE:	12/03/08
DESIGNER:	SC	CHECKED BY:	DK		
REVISION:	7 GPM	DATE:	8oz.		
REVISION:	SC	DATE:	08/06/12		

5301 SAWYER AVENUE BOISE, ID 83714
PHONE: (208) 375-5000 www.hydroblend.com

HYDRO-BLEND

L6080,FS VM

C:\Autocad\pump\6-Series\pump\7mm\0816080,FS VM.dwg



- PS=FOUNTAIN SOLUTIONS
REVISION:
- (A) MATERIAL CHANGED TO 316 SST, 08/02/04.
 - (B) CHANGED PART NO. TO 130PER, 04/07/05.
 - (C) ADDED O-RING COUNTER BORE TO TOP OF ENDPLATE, 10/17/07.
 - (C1) WAS 112N O-RING, 10/17/07.

SHIPPING INFORMATION:
LARGE BOX = 001-2
TOP INSERT = 001-2A
MIDDLE INSERT = 001-2B
BOTTOM INSERT = 001-2C
HYDRO-BLEND STAMP LOGO
MODEL NO. SERIAL NO. STICKER
LOWER LEFT HAND CORNER OF BOX

SCALE	SHEET	DATE
1:3.5	1 of 1	04/08/03
FORMA BR:	CHECKED BY:	
SC	DK	
DESCRIPTION:		
7 GPM		8oz.
DESIGNER:		
C1	SC	07/23/12

C:\Autocad\corpmw\6-Series\pump\7mm\081680.fs VM.wdg

5301 SAWYER AVENUE BOISE, ID 83714
PHONE: (208) 375-5000 www.hydroblend.com

HYDRO-BLEND

6080,FS VM