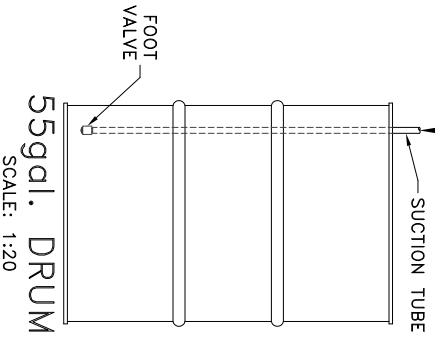
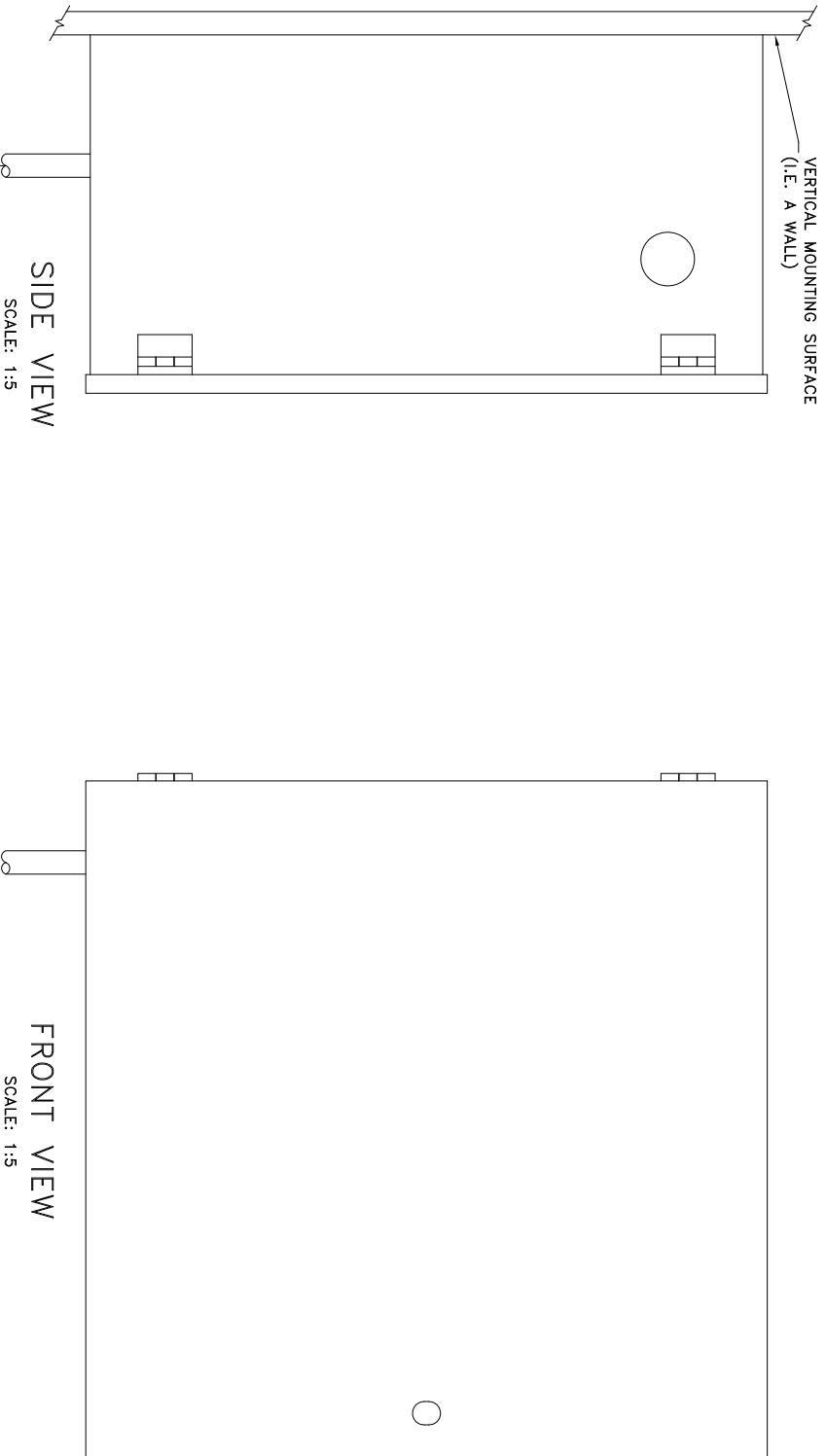


NOTE: HYDRO-BLEND VERTICAL MOUNT SYSTEM PART NUMBERS CONTAIN THE ABBREVIATION "VM"
 THIS ABBREVIATION DENOTES THE SYSTEMS MOUNTING ORIENTATION (SEE PACKING SLIP FOR PUMP NUMBER)

VM = VERTICAL MOUNT - DESIGNED TO MOUNT ON A VERTICAL SURFACE (I.E. A WALL)



FRONT VIEW
SCALE: 1:5

SIDE VIEW
SCALE: 1:5

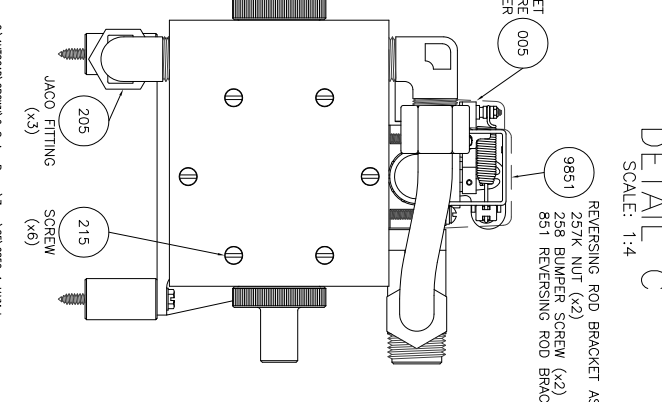
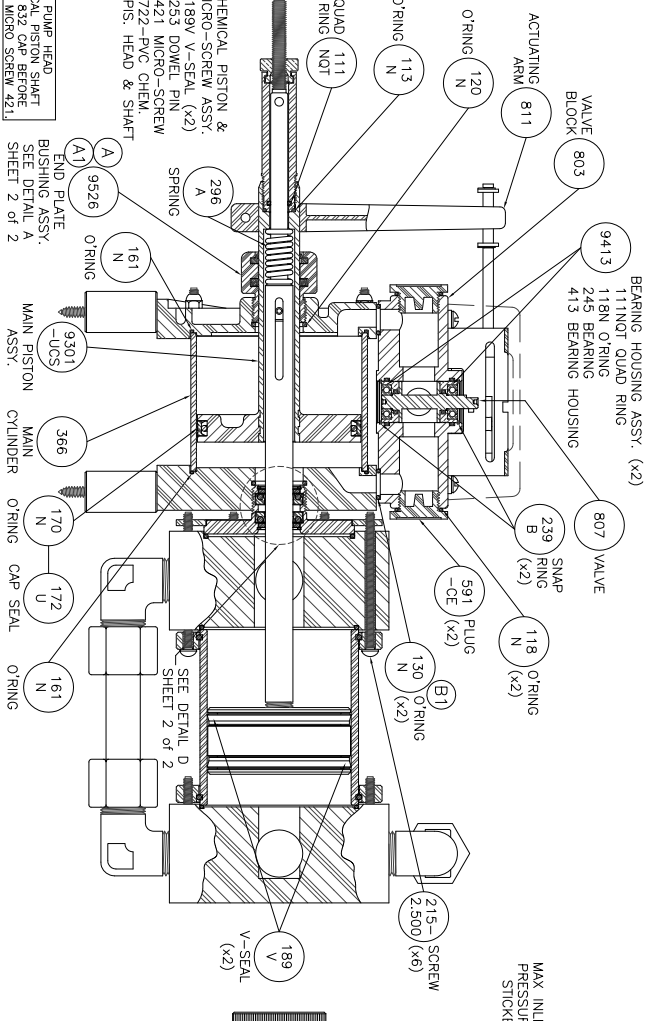
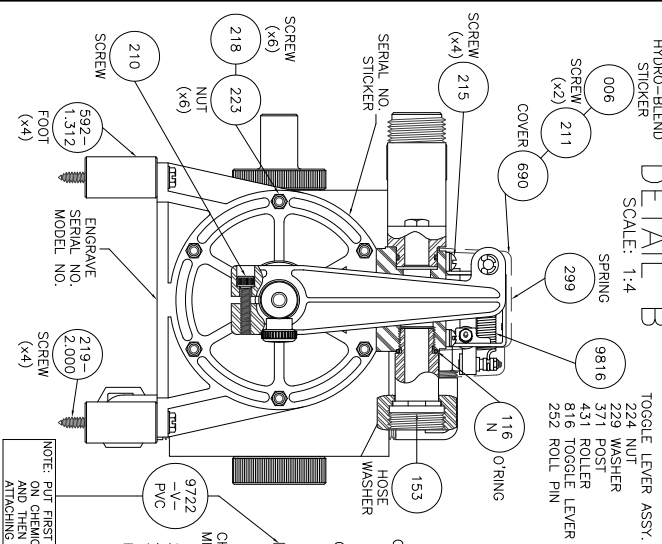
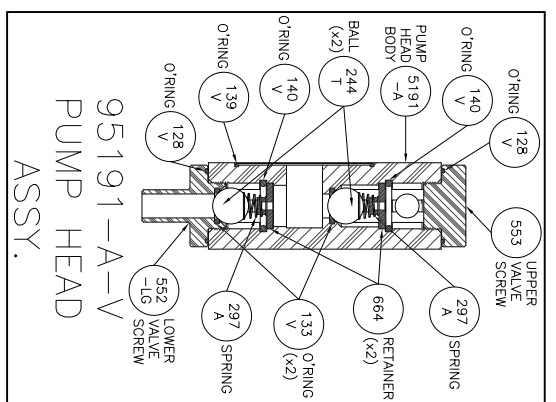
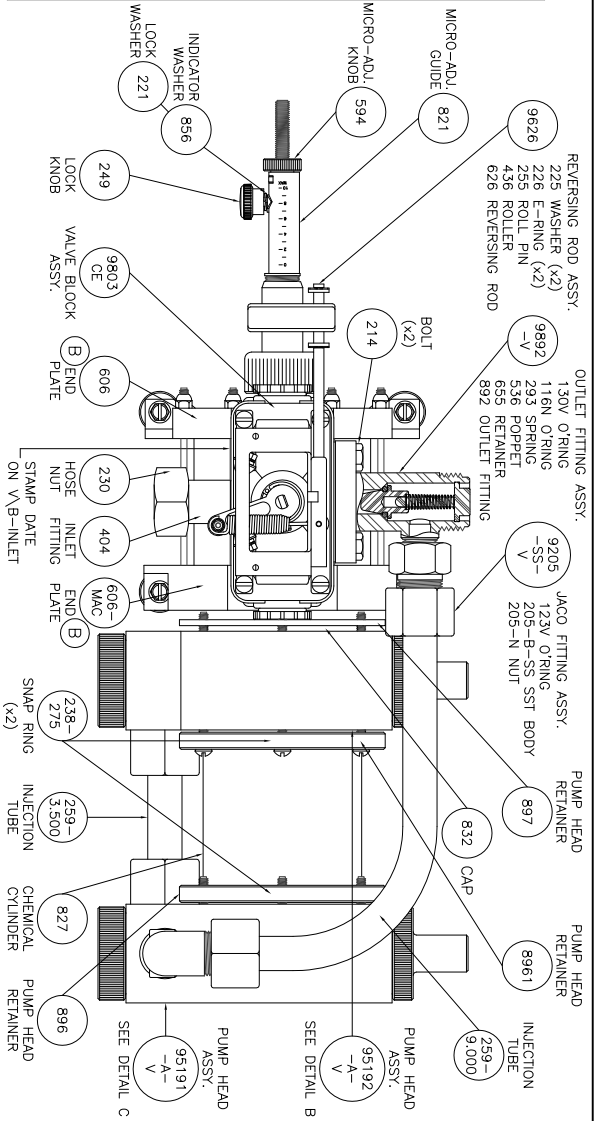
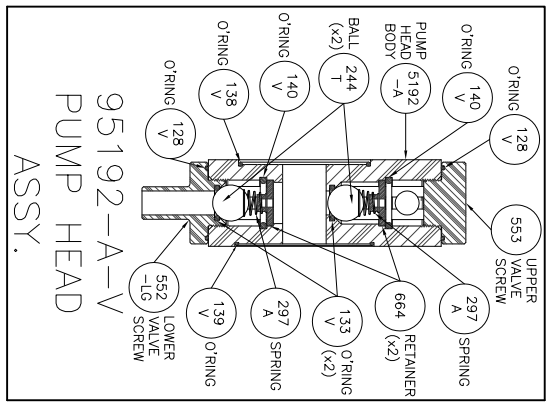
SCALE:	SHEET:	DATE:
NOTED	1 of 1	06/04/07
DRAWN BY:	CHECKED BY:	
SC	DK	
SERIES:	DESCRIPTION:	
REVISION:	REvised BY:	DATE:
	SC	01/16/14

C:\AUTOCAD\GROWIN\Paper\Wall Mounting -Instructions\System-VM-Mounting-Instructions.dwg



5301 SAWYER AVENUE BOISE, ID 83714
 PHONE: (208) 375-5000 www.hydroblend.com

MOUNTING INSTRUCTIONS
 SYSTEM-VERTICAL MOUNT



REVISION:
SEE SHEET 2 of 2

SHIPPING INFORMATION:
SMALL CROWN SYSTEM BOX
= 001-5 (20 x 15 x 15)
FOAM PACKAGED
HYDRO-BLEND STAMP LOGO
MODEL NO. SERIAL NO. STICKER
LOWER LEFT HAND CORNER OF BOX

SUCTION TUBE ASSY NO. = 9288-V
OPERATING MANUAL REQUIRED
PUMP SCHEMATIC REQUIRED
9288-V SCHEMATIC REQUIRED
9364-750-V FOOT VALVE ASSY
SCHEMATIC REQUIRED

SCALE	SHEET	DATE
1:3.5	1 of 2	10/05/00

FORM BR:	CHECKED BY:	DESCRIPTION:
SC	DK	

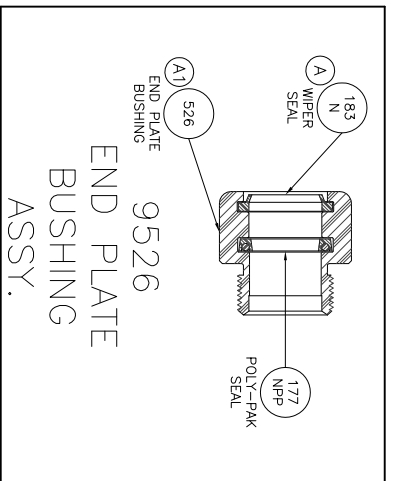
REVISION:	DATE:
7 GPM	850Z.



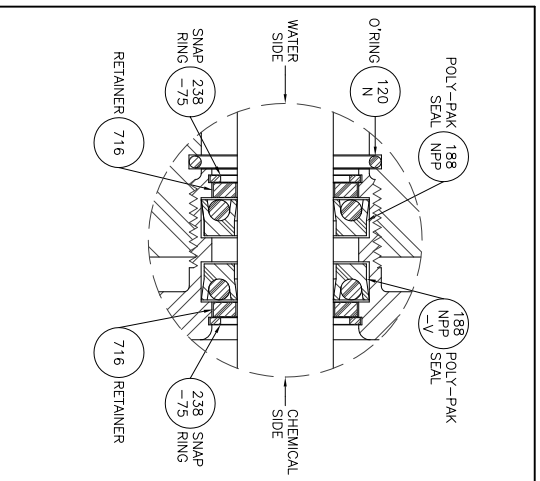
5301 SAWYER AVENUE BOISE, ID 83714
PHONE: (208) 375-5000 www.hydroblend.com
PART NUMBER:
6850-A-V, VM

© AUTOMATIC FORMWORK SYSTEMS, Inc. 1999. All rights reserved.


- REVISION:
- (A) WAS 178N DOUBLE LIP WIPER, 03/25/02.
 - (A1) WIPER SEAL GROOVE DIM. CHANGE, 03/25/02.
 - (B) ADDED O'RING COUNTER BORE TO TOP OF ENDPLATE, 10/17/07.
 - (B1) WAS 112N O'RING, 10/17/07.



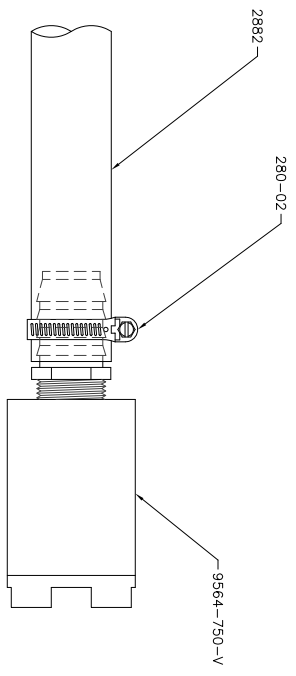
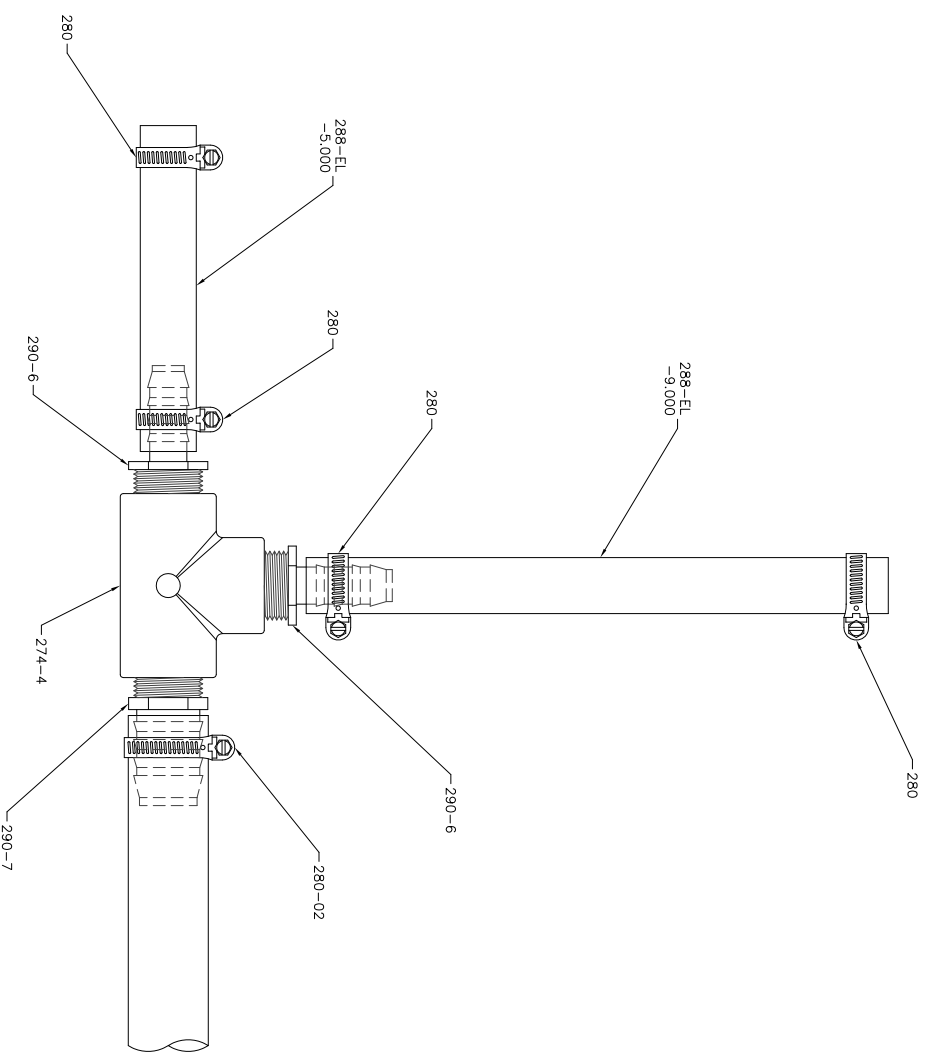
DETAIL A
SCALE: 1:2



DETAIL D
SCALE: 1:1


SHIPPING INFORMATION: SMALL CROWN SYSTEM BOX = 001-5 (20 x 15 x 15) FOAM PACKAGED HYDRO-BLEND STAMP LOGO		SUCTION TUBE ASSY NO. = 9288-V		OPERATING MANUAL REQUIRED PUMP SCHEMATIC REQUIRED 9288-V SCHEMATIC REQUIRED 9364-750-V FOOT VALVE ASSY SCHEMATIC REQUIRED	
MODEL NO. SERIAL NO. STICKER LOWER LEFT HAND CORNER OF BOX	SCALE:	NOTED	SHEET	DATE:	C:\AUTOCAD\CROWN-6-Series-Pump\7mm\83\6850-A-V.Mxd
		7 GPM	2 of 2	10/05/00	
		SC	REVISION:	CHECKED BY:	
		B1	DESIGNER:	DATE:	
		SC	8502.	01/16/14	
					
<p>5301 SAWYER AVENUE BOISE, ID 83714 PHONE: (208) 375-5000 www.hydroblend.com</p>					
<p>6850-A-V, VM</p>					

PART NO.	DESCRIPTION	QTY.
274-4	Tee - 3/4 FNPT x 3/4 FNPT x 3/4 FNPT - Sch 80 PVC	1
280	Clamp, Hose - SAE #8 - SST	4
280-02	Clamp, Hose - SAE #16 - SST	2
288-EL-5,000	Suction Tube - Nylon Reinforced	1
288-EL-9,000	Suction Tube - Nylon Reinforced	1
290-6	Barb Fitting - Straight - 3/4 MNPT x 1/2 HB - Sch 80 PVC	2
290-7	Barb Fitting - Straight - 3/4 MNPT x 1.0 HB - Sch 80 PVC	1
2882	Suction Tube - Nylon Reinforced - 6FT	1
9564-750-V	Foot Valve Assembly - PVC - 3/4 FNPT - Viton Seals	1



C:\AUTOCAD\9560M\Assembly\9288-V.dwg

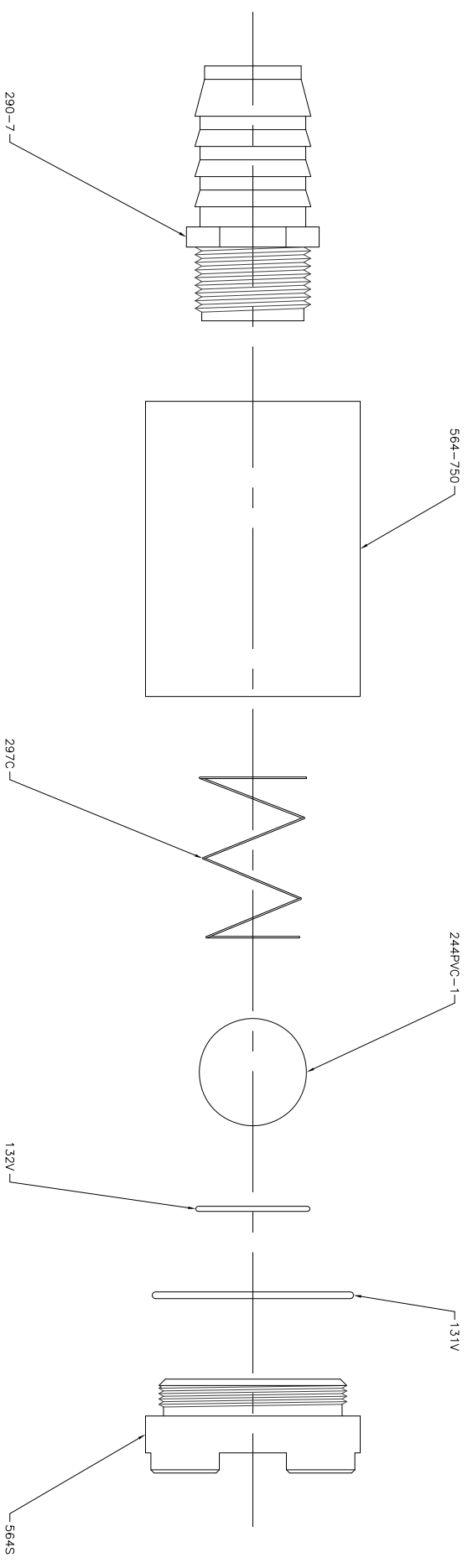
SCALE:	SHEET:	DATE:
1:3	1 of 1	01/25/02
DRAWN BY:	CHECKED BY:	
SC	DK	
SERIES:	DESCRIPTION:	
	Suction Tube Assy.	
REVISION:	REvised BY:	DATE:
	SC	01/16/14




HYDRO-BLEND

5301 SAWYER AVENUE BOISE, ID 83714
 PHONE: (208) 375-5000 www.hydroblend.com
 PART NUMBER: 9288-V

PART NO.	DESCRIPTION	QTY.
131V	O'ring - 1-3/4 ID x 1-7/8 OD x 1/16 CS - 75 Brn Viton	1
132V	O'ring - 7/8 ID x 1-1/16 OD x 3/32 CS - 75 Brn Viton	1
244PVC-1	Ball - 1.0 DIA - Ground - PVC	1
290-7	Barb Fitting - Straight - 3/4 MNPT x 1.0 HB - Sch 80 PVC	1
297C	Spring - Hastalloy C-276	1
564-750	Foot Valve Body - 3/4 FNPT - PVC	1
564S	Foot Valve Seat - PVC	1



SCALE:	SHEET:	DATE:	
1:1.5	1 of 1	10/28/05	
DESIGNER:	CHECKED BY:	DESCRIPTION:	5301 SAWYER AVENUE BOISE, ID 83714 PHONE: (208) 375-5000 www.hydroblend.com PART NUMBER:
SC	DK	Foot Valve Assy.	
REVISION:	REvised BY:	DATE:	
	SC	01/16/14	

C:\AUTOCAD\950M\Assembly\9564-750-1.dwg

9564-750-V