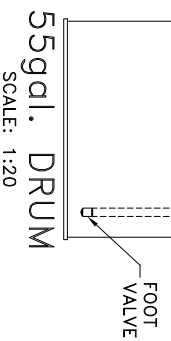
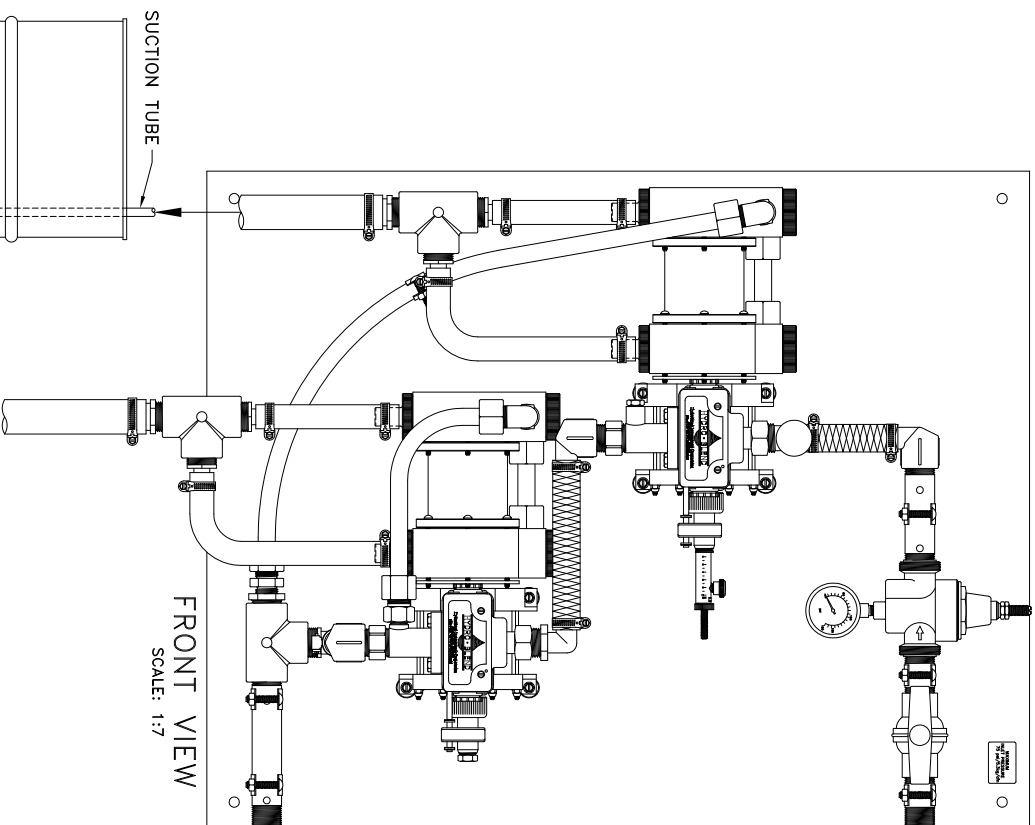
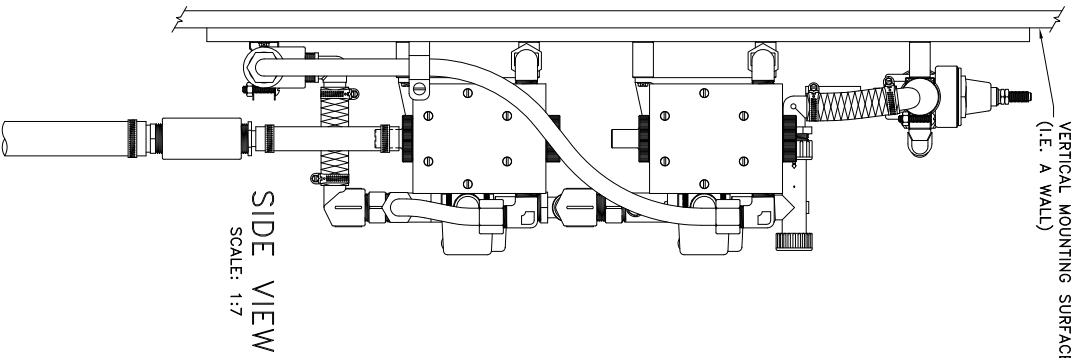

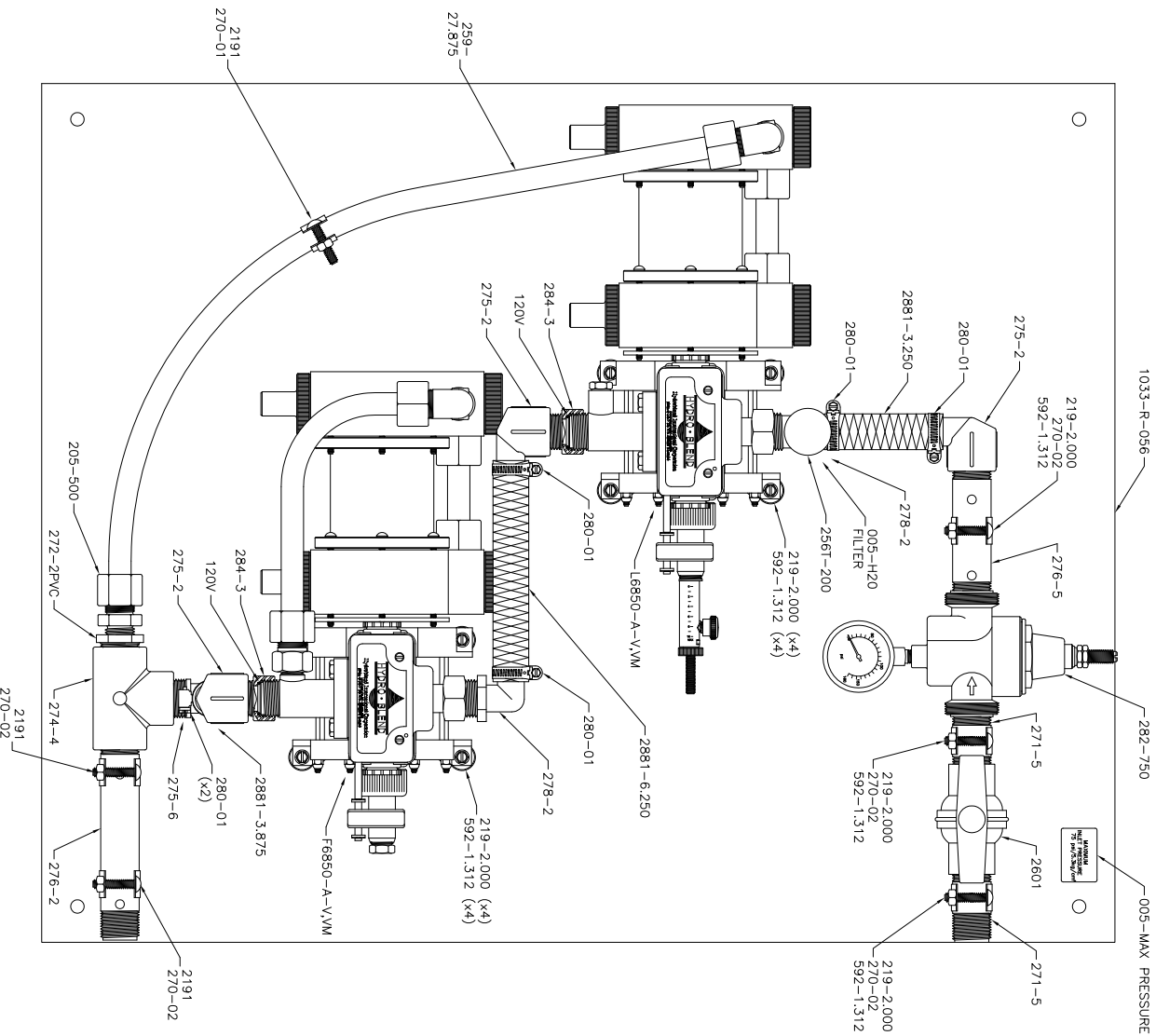


NOTE: HYDRO-BLEND VERTICAL MOUNT SYSTEM PART NUMBERS CONTAIN THE ABBREVIATION "VM"
 THIS ABBREVIATION DENOTES THE SYSTEMS MOUNTING ORIENTATION (SEE PACKING SLIP FOR PUMP NUMBER)

VM = VERTICAL MOUNT - DESIGNED TO MOUNT ON A VERTICAL SURFACE (I.E. A WALL)



SCALE:	SHEET:	DATE:	C:\AUTOCAD\GROWIN\Paper-Mark\Mounting-Instructions\VM-Mounting-Instructions.dwg	
NOTED	1 of 1	02/19/10		
DRAWN BY:	CHECKED BY:			
SC	DK			
SERIES:	DESCRIPTION:			
REVISION:	REvised BY:	DATE:		
	SC	03/07/11		
			 HYDRO-BLEND 5301 SAWYER AVENUE BOISE, ID 83714 PHONE: (208) 375-5000 www.hydroblend.com MOUNTING INSTRUCTIONS -056- VERTICAL MOUNT	



REVISION:

SHIPPING INFORMATION:
 SYSTEM BOX = 001-7
 FOAM PACKAGED (31 x 24 x 19)

SUCTION TUBE ASSY NO.
 = 9288-V (x2)

HYDRO-BLEND STAMP LOGO
 MODEL NO. SERIAL NO. STICKER
 LOWER LEFT HAND CORNER OF BOX

OPERATING MANUAL REQUIRED
 PUMP SCHEMATIC REQUIRED
 SYSTEM SCHEMATIC REQUIRED
 9288-V SCHEMATIC REQUIRED
 9564-750-V FOOT VALVE ASSY.
 SCHEMATIC REQUIRED

PART NO. DESCRIPTION QTY.

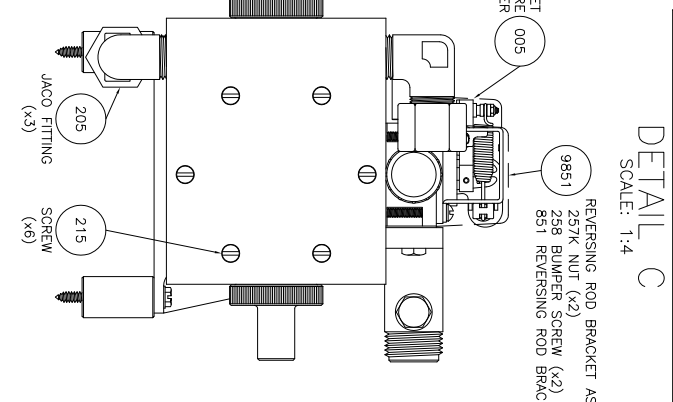
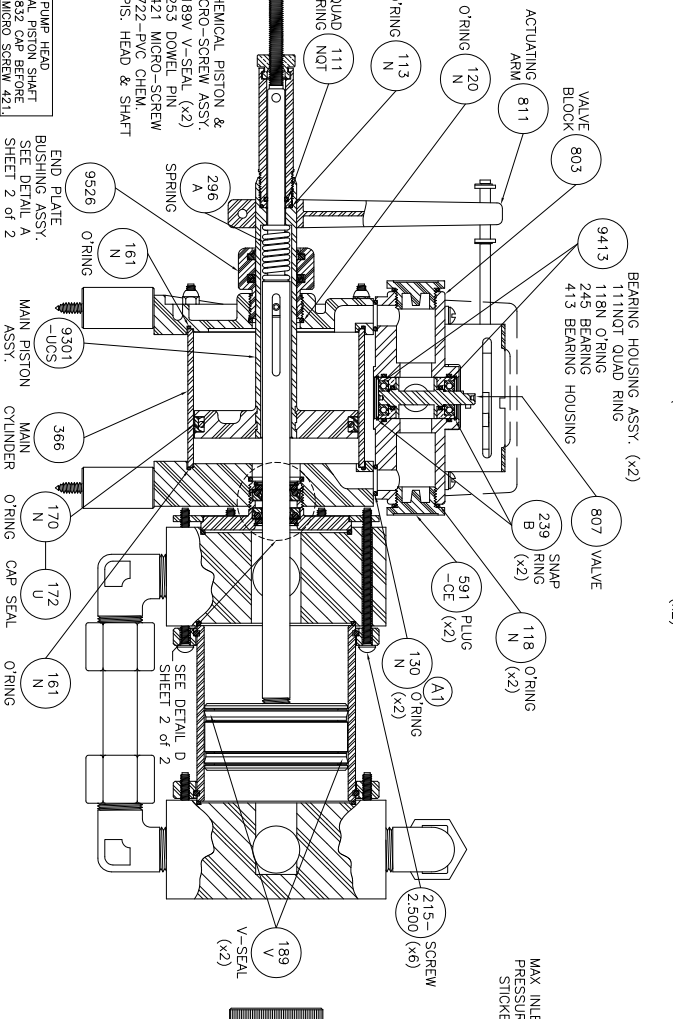
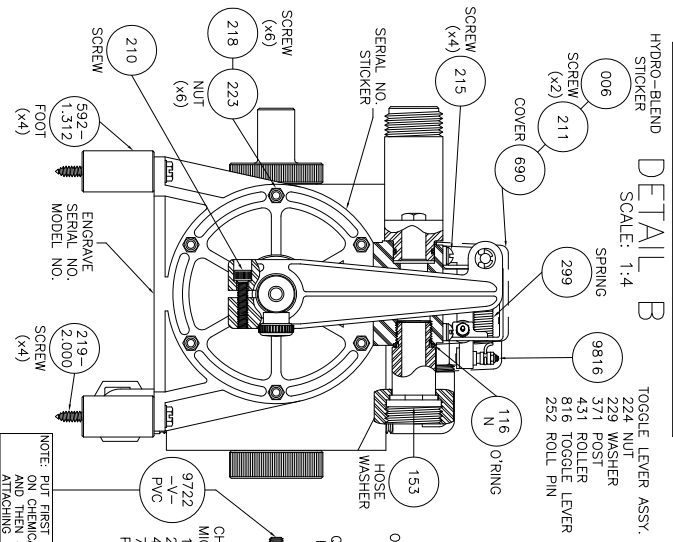
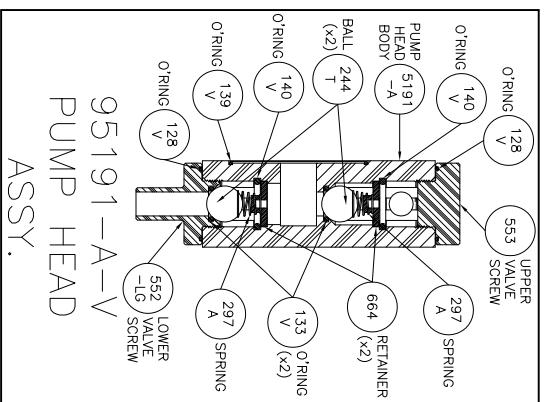
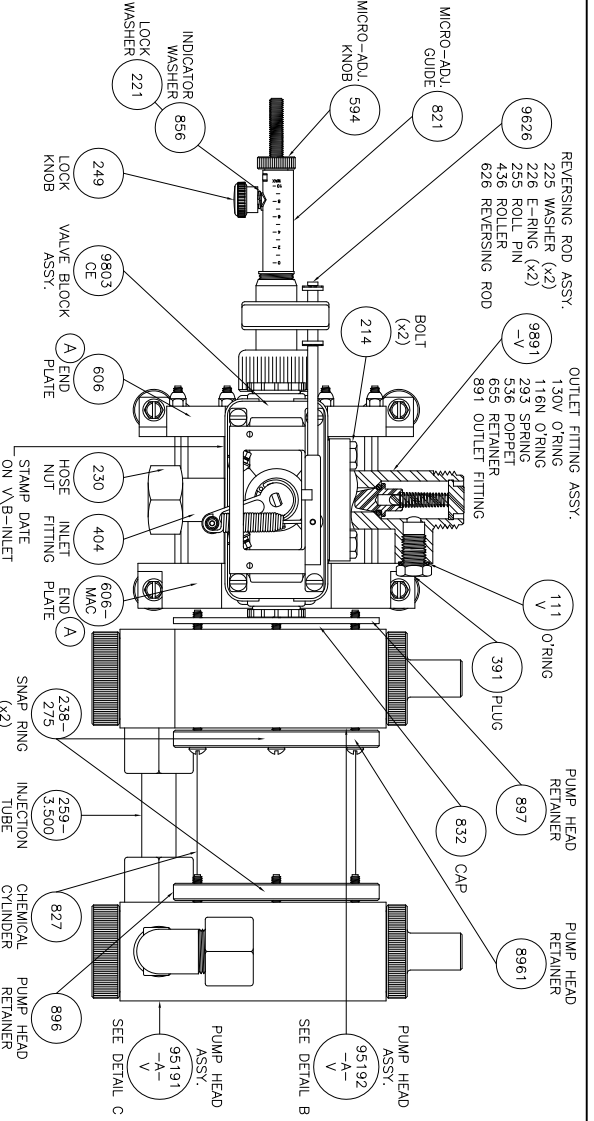
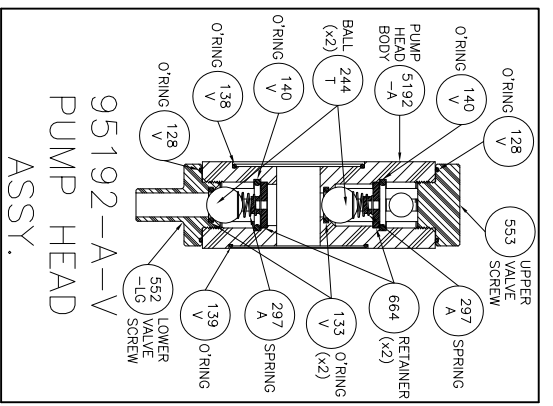
005-H2O FILTER	Sticker - Water Filter	1
005-MAX PRESSURE	Sticker - Water Inlet - Maximum Inlet Pressure	1
120V	O'ring - 7/8 ID x 1.0 OD x 1/16 CS - 75 Brn Viton	2
205-500	Jaco Male Connector - 5/8 Tube OD - 1/2 MNPT - Polypro	1
219-2.000	Screw - #10 x 2.0 - Hex Washer Head SLTD - Plated	11
256T-200	Tee Housing & Filter Assy - 3/4 FGHT x 3/4 MGHT - (200 Mesh/55 Micron Filter Cartridge)	1
259-27.875	Injection Tube	1
270-01	Clamp, Pipe - 1/2 Dia. - Plated	1
270-02	Clamp, Pipe - 3/4 Dia. - Plated	5
271-5	Nipple - 3/4 MNPT - 2-1/2 Long - Sch 80 PVC	2
272-2PVC	Reducer - 3/4 MNPT - 1/2 FNPT - Sch 80 PVC	1
274-4	Tee - 3/4 FNPT x 3/4 FNPT x 3/4 FNPT - Sch 80 PVC	1
275-2	Barb Fitting - 90 Degree - 3/4 FNPT x 3/4 HB - Sch 80 PVC	3
275-6	Barb Fitting - 90 Degree - 3/4 MNPT x 3/4 HB - Sch 80 PVC	1
276-2	Nipple - 3/4 MNPT - 6.0 Long - Sch 80 PVC	1
276-5	Nipple - 3/4 MNPT - 4.500 Long - Sch 80 PVC	1
278-2	Barb Fitting - 90 Degree - 3/4 MGHT x 3/4 HB - Polypro	2
280-01	Clamp, Hose - SAE #10 - SST	6
282-750	Regulator, Water Pressure - 3/4 FNPT - 10-35PSI - (Gauge Included)	1
284-3	Adapter - 1/2 FNPT ID x 3/4 MNPT OD x 3/4 FGHT - SST	2
592-1.312	Spacer - Acetal	11
1033-R-056	Backplate - 24.0 x 30.0 x .500 Thick - Polypro	1
2191	Screw - #14 x 1/2 - Hex Washer Head SLTD - Plated	3
2601	Valve, Ball - 3/4 FNPT - (Viton O'ring) - Sch 80 PVC	1
2881-3.250	Nylon Reinforced Hose	1
2881-3.875	Nylon Reinforced Hose	1
2881-6.250	Nylon Reinforced Hose	1
F6850-A-VVM	Hydro-Blend Proportioner	1
L6850-A-VVM	Hydro-Blend Proportioner	1

C:\Autodesk\GSPWA\Systm\1064-16850-F6850-A-VVM.dwg



5301 SAWYER AVENUE BOISE, ID 83714
 PHONE: (208) 375-5000 www.hydroblend.com
 PART NUMBER: 056-L6850/F6850
 -A-V,VM

SCALE: 1:5	SHEET: 1 of 1	DATE: 02/19/10
DESIGNER: SC	CHECKED BY: DK	
SERIES: 7 GPM	DESCRIPTION: 056-SYSTEM	
REVISION: SC	REvised BY: SC	DATE: 03/14/11



REVISION:
SEE SHEET 2 of 2

SHIPPING INFORMATION:
SMALL CROWN SYSTEM BOX
= 001-5 (20 x 15 x 15)
FOAM PACKAGED
HYDRO-BLEND STAMP LOGO
MODEL NO. SERIAL NO. STICKER
LOWER LEFT HAND CORNER OF BOX

SUCTION TUBE ASSY NO. = 9288-V
OPERATING MANUAL REQUIRED
PUMP SCHEMATIC REQUIRED
9288-V SCHEMATIC REQUIRED
9364-750-V FOOT VALVE ASSY
SCHEMATIC REQUIRED

NOTE: PUT FIRST PUMP HEAD
ON CHEMICAL PISTON SHAFT
AND THEN 832 CAP BEFORE
ATTACHING MICRO SCREW 421.

END PLATE
BLUSHING ASSY.
SEE DETAIL
SHEET 2 of 2

SEE DETAIL D
SHEET 2 of 2

© AUTOMATIC FORMWORK SYSTEMS, Inc. 1991. 16850-A-V, VM.dwg



5301 SAWYER AVENUE BOISE, ID 83714
PHONE: (208) 375-5000 www.hydroblend.com

16850-A-V, VM

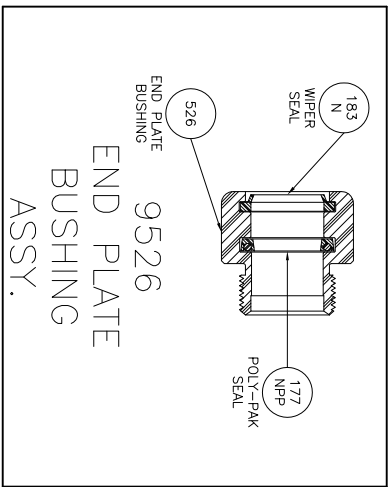
SCALE	SHEET	DATE
1:3.5	1 of 2	11/16/07

DESIGNER	CHECKED BY
A1	SC

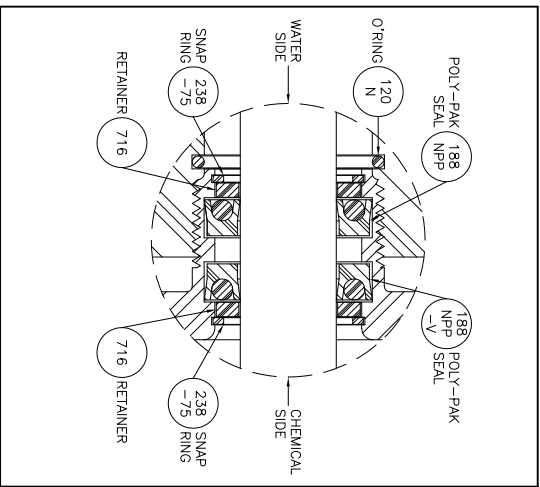
REVISION	REASON	DATE
7	GPM	8502.

REVISION:

- (A) ADDED O-RING COUNTER BORE TO TOP OF ENDPLATE, 10/17/07.
- (A1) WAS 112N O-RING, 10/17/07.



DETAIL A
SCALE: 1:2



DETAIL D
SCALE: 1:1

SHIPPING INFORMATION:
 SMALL CROWN SYSTEM BOX
 = 001-5 (20 x 15 x 15)
 FOAM PACKAGED
 HYDRO-BLEND STAMP LOGO
 MODEL NO. SERIAL NO. STICKER
 LOWER LEFT HAND CORNER OF BOX

SUCTION TUBE ASSY NO. = 9288-V

OPERATING MANUAL REQUIRED
 PUMP SCHEMATIC REQUIRED
 9288-V SCHEMATIC REQUIRED
 9364-750-V FOOT VALVE ASSY
 SCHEMATIC REQUIRED

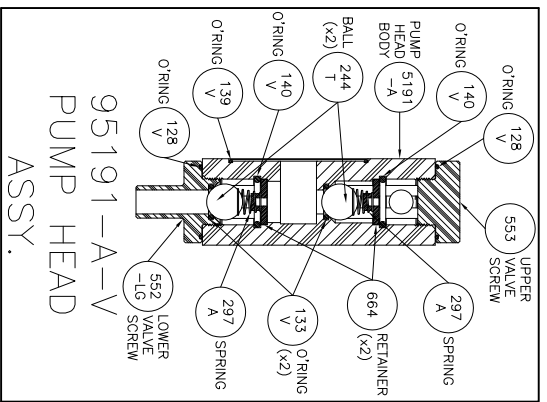
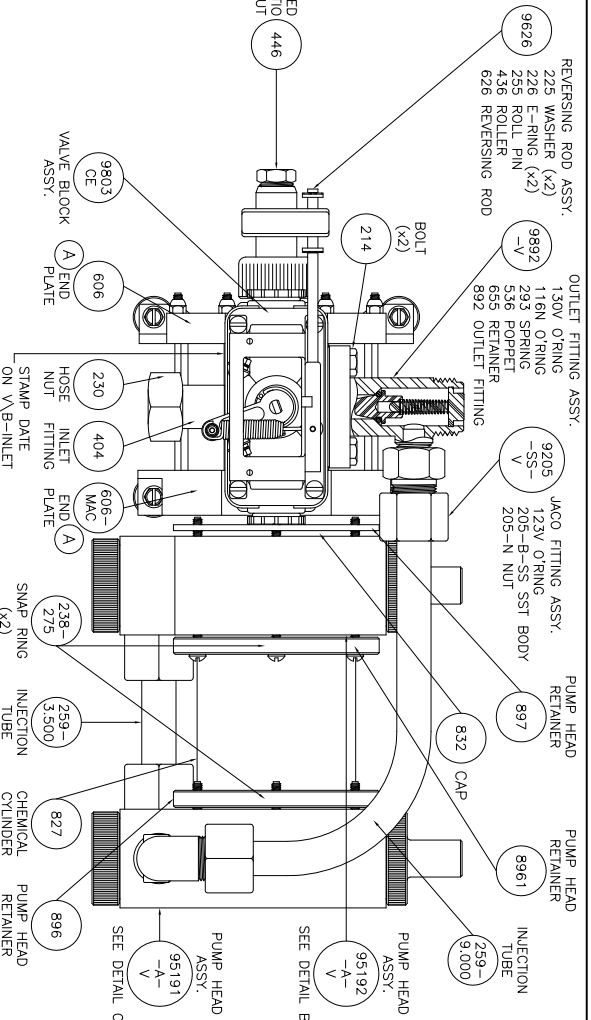
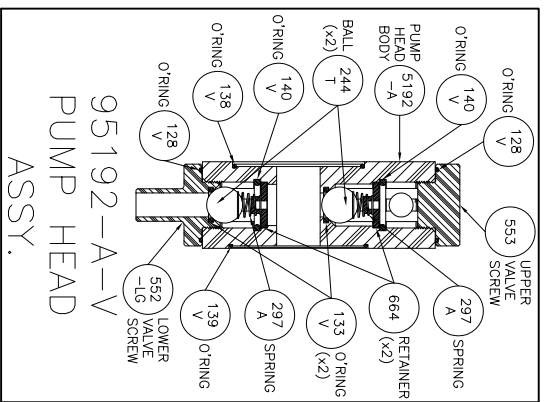
SCALE:	SHEET:	DATE:
NOTED	2 of 2	11/16/07
DESIGNER:	CHECKED BY:	
7 GPM	DK	
REVISION:	DATE:	
A1	03/07/11	

C:\AUTOCAD\9288VM\6-Series-Pumps\7mm\83118650-A-VM.dwg

HYDRO-BLEND

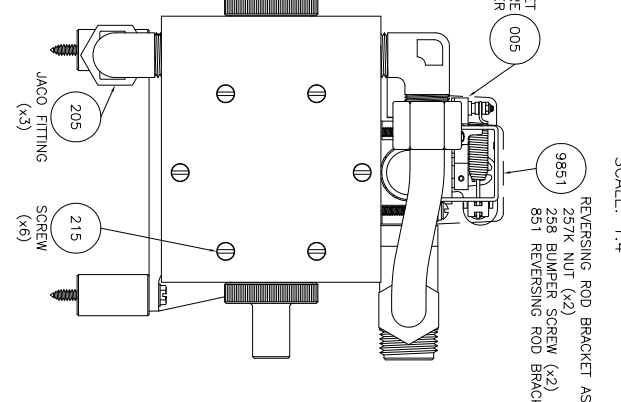
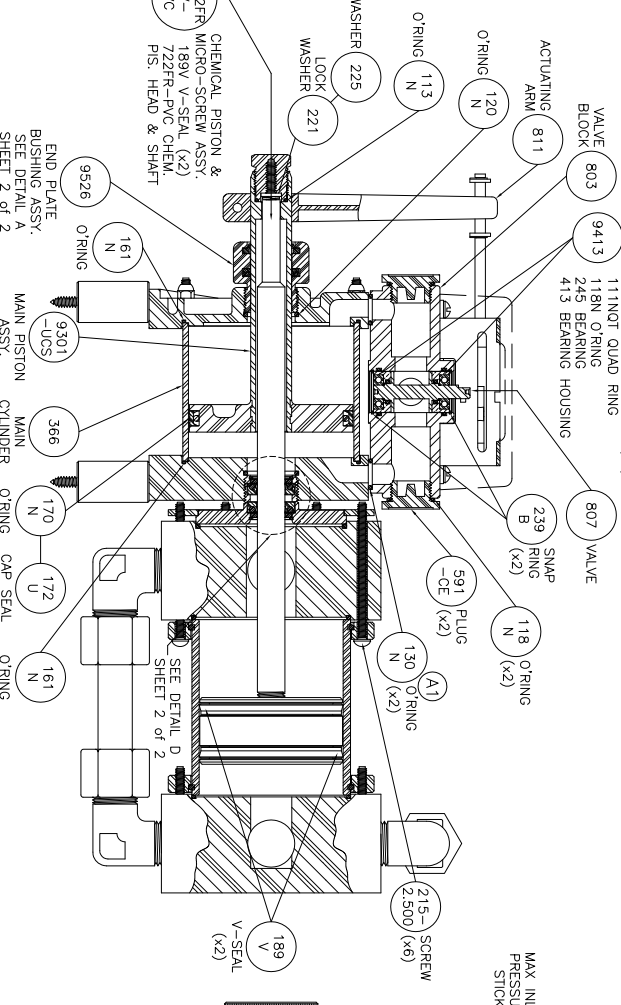
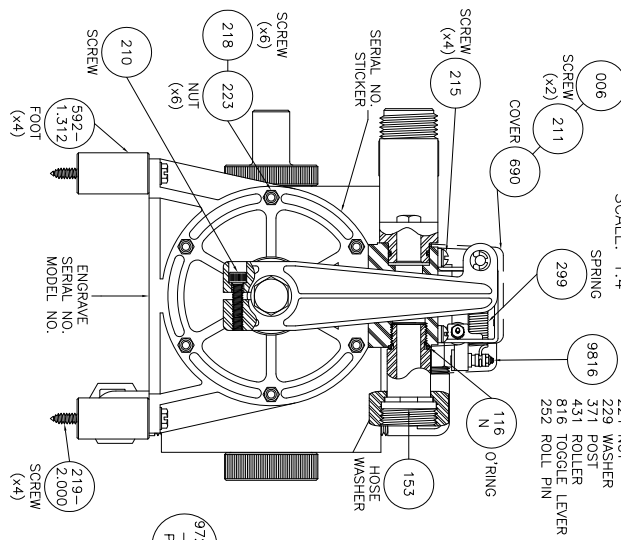
5301 SAWYER AVENUE BOISE, ID 83714
 PHONE: (208) 375-5000 www.hydroblend.com

L6850-A-V, VM



HYDRO-BLEND DETAIL B SCALE: 1:4

DETAIL C SCALE: 1:4



REVISION:
SEE SHEET 2 of 2

SHIPPING INFORMATION:
SMALL CROWN SYSTEM BOX = 001-5 (20 x 15 x 15)
FOAM PACKAGED
HYDRO-BLEND STAMP LOGO
MODEL NO. SERIAL NO. STICKER LOWER LEFT HAND CORNER OF BOX

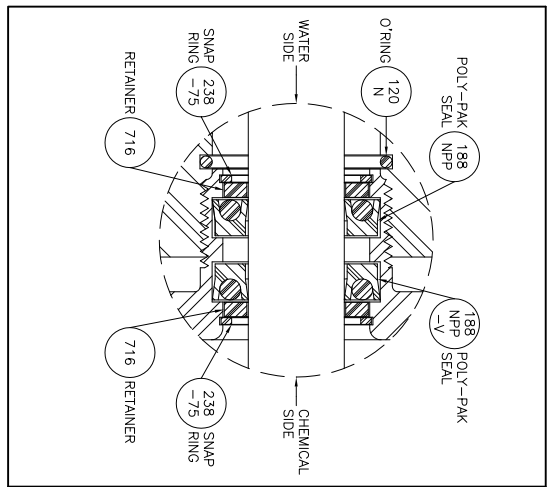
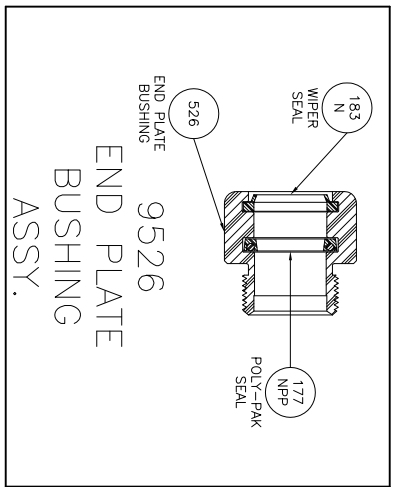
SUCTION TUBE ASSY NO. = 9288-V
OPERATING MANUAL REQUIRED
PUMP SCHEMATIC REQUIRED
9288-V SCHEMATIC REQUIRED
9364-750-V FOOT VALVE ASSY SCHEMATIC REQUIRED

© AUTOMATIC DISPENSING SYSTEMS, Inc. 1997
5301 SAWYER AVENUE BOISE, ID 83714
PHONE: (208) 375-5000 www.hydroblend.com

SCALE:	1:3.5	SHEET:	1 of 2	DATE:	11/16/07
FORM BR:	SC	CHECKED BY:	DK		
SERIES:	7 GPM	DESCRIPTION:	Fixed Ratio		
REGION:	A1	DESIGNED BY:	SC	DATE:	03/07/11
<p>F6850-A-V, VM</p>					

REVISION:

- (A) ADDED O-RING COUNTER BORE TO TOP OF ENDPLATE, 10/17/07.
- (B) WAS 112N O-RING, 10/17/07.



SHIPPING INFORMATION: SMALL CROWN SYSTEM BOX = 001-5 (20 x 15 x 15) FOAM PACKAGED HYDRO-BLEND STAMP LOGO MODEL NO. SERIAL NO. STICKER LOWER LEFT HAND CORNER OF BOX

SUCTION TUBE ASSY NO. = 9288-V

OPERATING MANUAL REQUIRED
PUMP SCHEMATIC REQUIRED
9288-V SCHEMATIC REQUIRED
9364-750-V FOOT VALVE ASSY SCHEMATIC REQUIRED

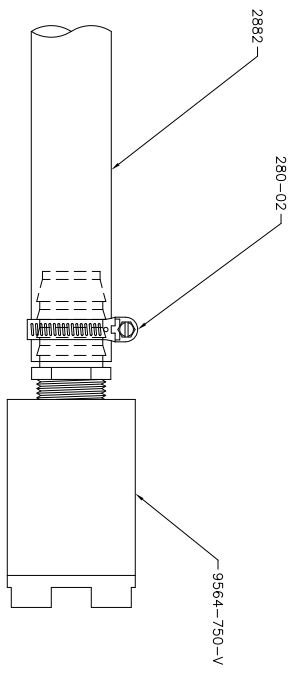
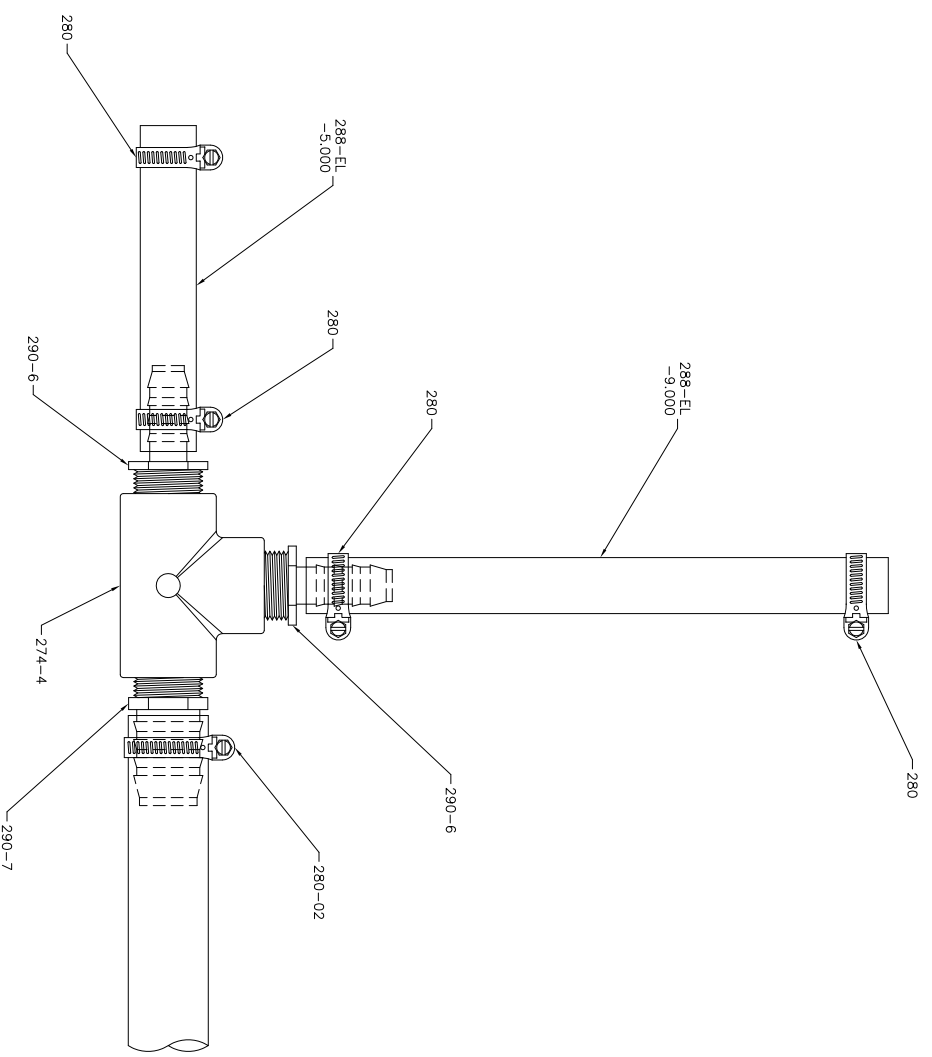
SCALE:	SHEET:	DATE:
NOTED	2 of 2	11/16/07
DESIGNER:	CHECKED BY:	
7 GPM	DK	
REVISION:	DESCRIPTION:	DATE:
A1	Fixed Ratio	03/07/11

C:\AUTOCAD\9288V\6-Series-Pump\7mm\83V17850-A-VM.dwg

5301 SAWYER AVENUE BOISE, ID 83714
PHONE: (208) 375-5000 www.hydroblend.com


F6850-A-V, VM

PART NO.	DESCRIPTION	QTY.
274-4	Tee - 3/4 FNPT x 3/4 FNPT x 3/4 FNPT - Sch 80 PVC	1
280	Clamp, Hose - SAE #8 - SST	4
280-02	Clamp, Hose - SAE #16 - SST	2
288-EL-5,000	Suction Tube - Nylon Reinforced	1
288-EL-9,000	Suction Tube - Nylon Reinforced	1
290-6	Barb Fitting - Straight - 3/4 MNPT x 1/2 HB - Sch 80 PVC	2
290-7	Barb Fitting - Straight - 3/4 MNPT x 1.0 HB - Sch 80 PVC	1
2882	Suction Tube - Nylon Reinforced - 6FT	1
9564-750-V	Foot Valve Assembly - PVC - 3/4 FNPT - Viton Seals	1



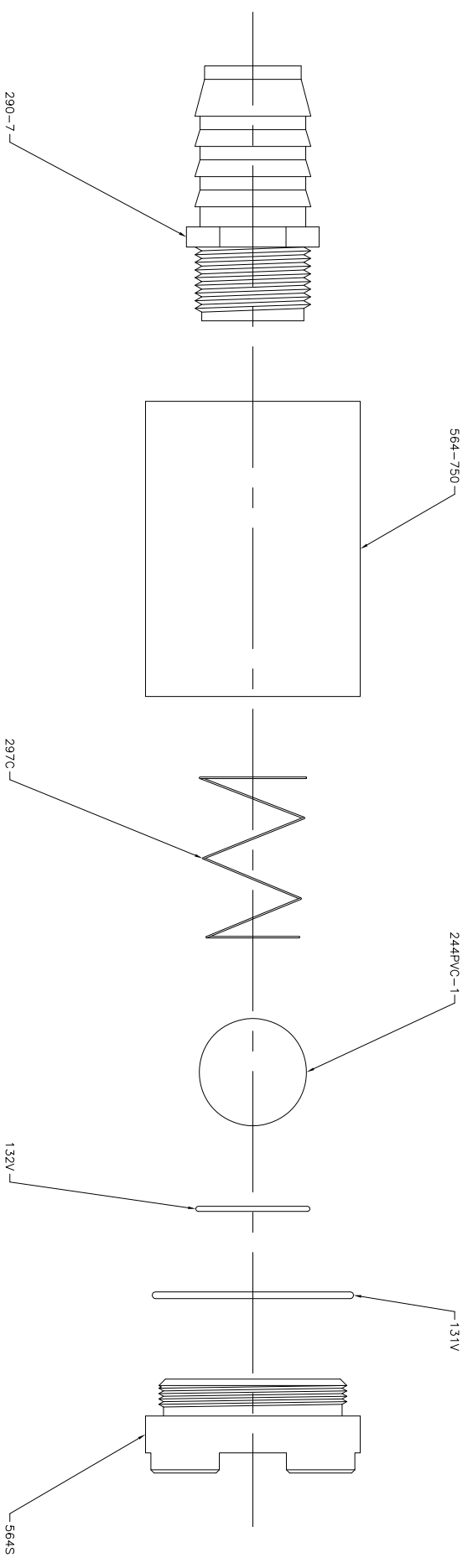
C:\AUTOCAD\9500M\Assembly\9288-V.dwg


SCALE:	SHEET:	DATE:
1:3	1 of 1	01/25/02
DRAWN BY:	CHECKED BY:	
SC	DK	
SERIES:	DESCRIPTION:	PART NUMBER:
	SUCTION TUBE ASSY.	9288-V
REVISION:	REvised BY:	DATE:
	SC	12/14/10



HYDRO-BLEND
5301 SAWYER AVENUE BOISE, ID 83714
PHONE: (208) 375-5000 www.hydroblend.com

PART NO.	DESCRIPTION	QTY.
131V	O'ring - 1-3/4 ID x 1-7/8 OD x 1/16 CS - 75 Brn Viton	1
132V	O'ring - 7/8 ID x 1-1/16 OD x 3/32 CS - 75 Brn Viton	1
244PVC-1	Ball - 1.0 DIA - Ground - PVC	1
290-7	Barb Fitting - Straight - 3/4 MNPT x 1.0 HB - Sch 80 PVC	1
297C	Spring - Hastalloy C-276	1
564-750	Foot Valve Body - 3/4 FNPT - PVC	1
564S	Foot Valve Seat - PVC	1



SCALE:	SHEET:	DATE:	
1:1.5	1 of 1	10/28/05	
DESIGNER:	CHECKED BY:	DESCRIPTION:	5301 SAWYER AVENUE BOISE, ID 83714 PHONE: (208) 375-5000 www.hydroblend.com PART NUMBER:
SC	DK	FOOT VALVE ASSY.	
REVISION:	REvised BY:	DATE:	
	SC	03/24/09	

C:\AUTOCAD\9590M\Assembly\9564-750-1.dwg

9564-750-V