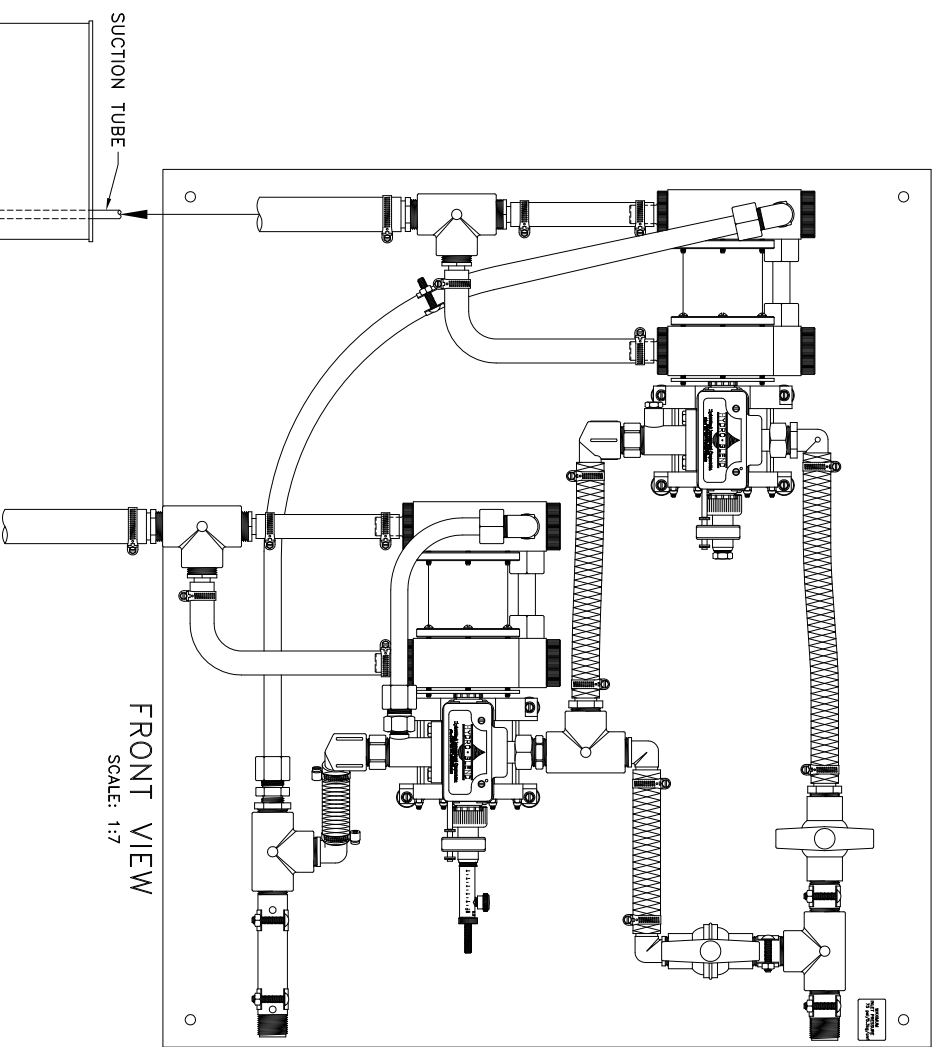
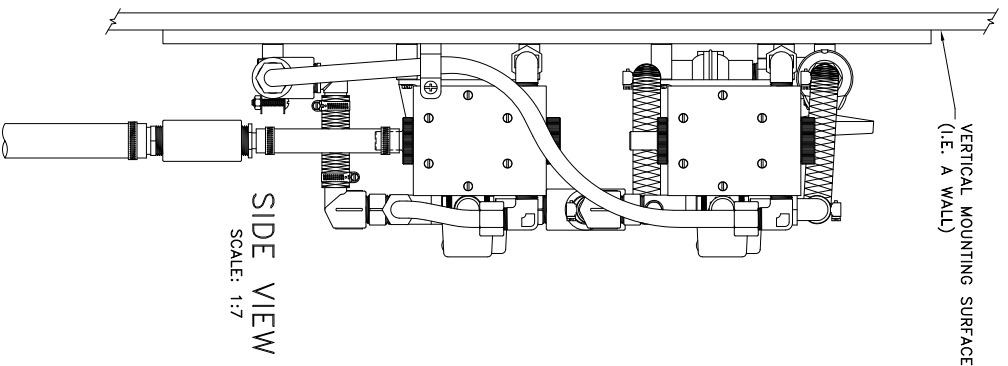
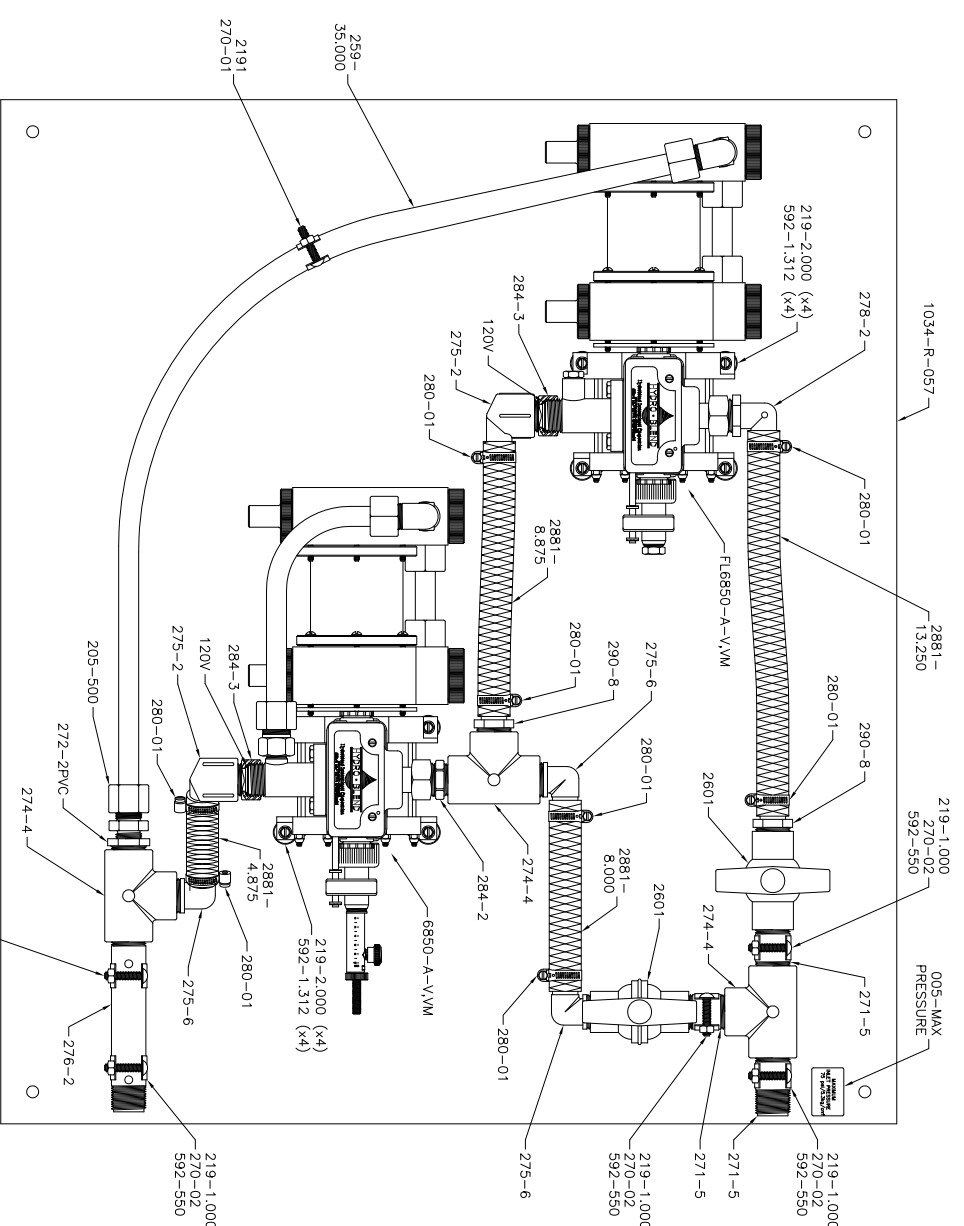


NOTE: HYDRO-BLEND VERTICAL MOUNT SYSTEM PART NUMBERS CONTAIN THE ABBREVIATION "VM"
 THIS ABBREVIATION DENOTES THE SYSTEMS MOUNTING ORIENTATION (SEE PACKING SLIP FOR PUMP NUMBER)
VM = VERTICAL MOUNT - DESIGNED TO MOUNT ON A VERTICAL SURFACE (I.E. A WALL)



SCALE:	SHEET:	DATE:	C:\AUTOCAD\GROMM\Paper\www\Mounting-Instructions\037-VM-Mounting-Instructions.dwg	
NOTED	1 of 1	10/07/11		
DRAWN BY:	CHECKED BY:			
SC	DK			
SERIES:	DESCRIPTION:			
REVISION:	REvised BY:			
		5301 SAWYER AVENUE BOISE, ID 83714		
		PHONE: (208) 375-5000 www.hydroblend.com		
		PART NUMBER: MOUNTING INSTRUCTIONS		
		-057-		
		VERTICAL MOUNT		



PART NO.	DESCRIPTION	QTY.
005-MAX PRESSURE	Sticker - Water Inlet - Maximum Inlet Pressure	1
120V	O'ring - 7/8 ID x 1.0 OD x 1/16 CS - 75 Brn Viton	2
205-500	Jaco Male Connector - 5/8 Tube OD - 1/2 MNPT - Polypro	1
219-1,000	Screw - #10 x 1.0 - Hex Washer Head SLTD - Plated	5
219-2,000	Screw - #10 x 2.0 - Hex Washer Head SLTD - Plated	8
259-35,000	Injection Tube	1
270-01	Clamp, Pipe - 1/2 Dia. - Plated	1
270-02	Clamp, Pipe - 3/4 Dia. - Plated	5
271-5	Nipple - 3/4 MNPT - 2-1/2 Long - Sch 80 PVC	3
272-2PVC	Reducer - 3/4 MNPT x 1/2 FNPT - Sch 80 PVC	1
274-4	Tee - 3/4 FNPT x 3/4 FNPT x 3/4 FNPT - Sch 80 PVC	3
275-2	Barb Fitting - 90 Degree - 3/4 FNPT x 3/4 HB - Sch 80 PVC	2
275-6	Barb Fitting - 90 Degree - 3/4 MNPT x 3/4 HB - Sch 80 PVC	3
276-2	Nipple - 3/4 MNPT - 6.0 Long - Sch 80 PVC	1
278-2	Barb Fitting - 90 Degree - 3/4 MGH x 3/4 HB - Polypro	1
280-01	Clamp, Hose - SAE #10 - SST	8
284-2	Adapter - 1/2 FNPT ID x 3/4 MNPT OD x 3/4 MGH - 316 SST	1
284-3	Adapter - 1/2 FNPT ID x 3/4 MNPT OD x 3/4 FGHT - 316 SST	2
290-8	Barb Fitting - Straight - 3/4 MNPT x 3/4 HB - Sch 80 PVC	2
592-1,312	Spacer - Acetel	8
592-550	Spacer - Acetel	5
1034-R-057	Backplate - 28.0 x 32.0 x .500 Thick - Polypro	1
2191	Screw - #14 x 1/2 - Hex Washer Head SLTD - Plated	1
2601	Valve, Ball - 3/4 FNPT - (Viton O'ring) - Sch 80 PVC	2
2881-4,875	Nylon Reinforced Hose	1
2881-8,000	Nylon Reinforced Hose	1
2881-8,875	Nylon Reinforced Hose	1
2881-13,250	Nylon Reinforced Hose	1
6850-A-V,VM	Hydro-Blend Proportioner	1
FL6850-A-V,VM	Hydro-Blend Proportioner	1

REVISION:

SHIPPING INFORMATION:
 SYSTEM BOX = XXX-X
 FOAM PACKAGED (34 x 38 x 19)
 SUCTION TUBE ASSY NO. = 9288-V (x2)

OPERATING MANUAL REQUIRED
 PUMP SCHEMATIC REQUIRED
 SYSTEM SCHEMATIC REQUIRED
 9288-V FOOT VALVE ASSY
 9564-750-V FOOT VALVE ASSY
 SCHEMATIC REQUIRED

SCALE: 1:6
 SHEET: 1 of 1
 DATE: 10/07/11

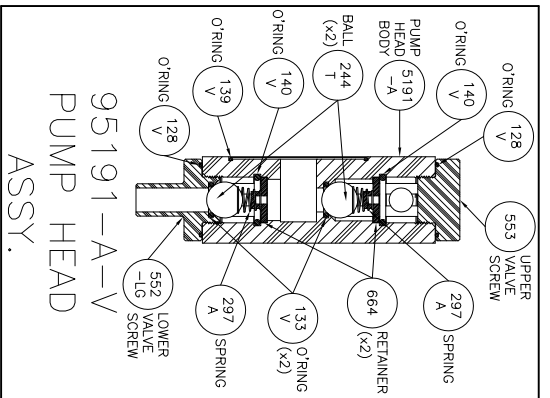
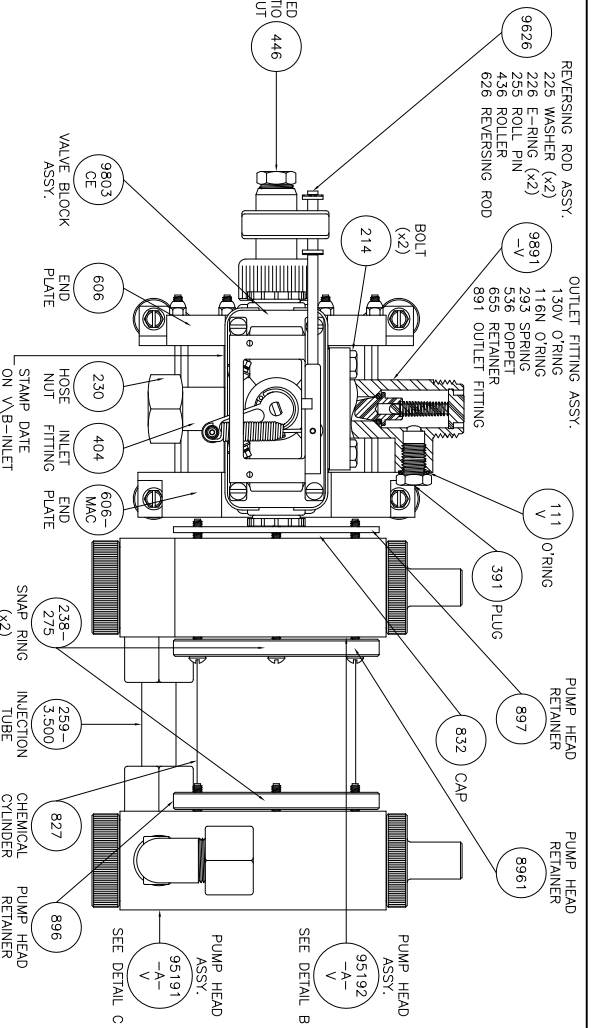
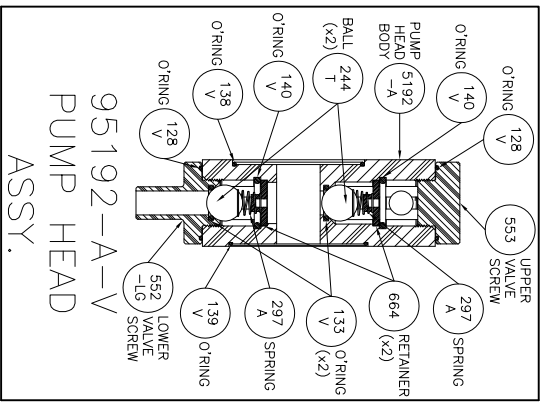
DESIGNER: SC
 CHECKED BY: DK
 DATE: 11/22/11

REVISION: 7 GPM
 REVISION BY: SC



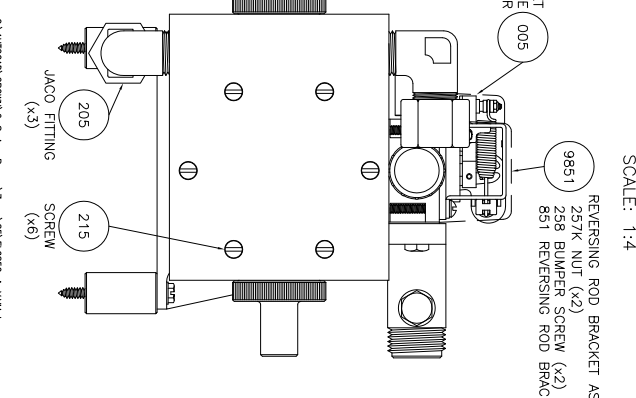
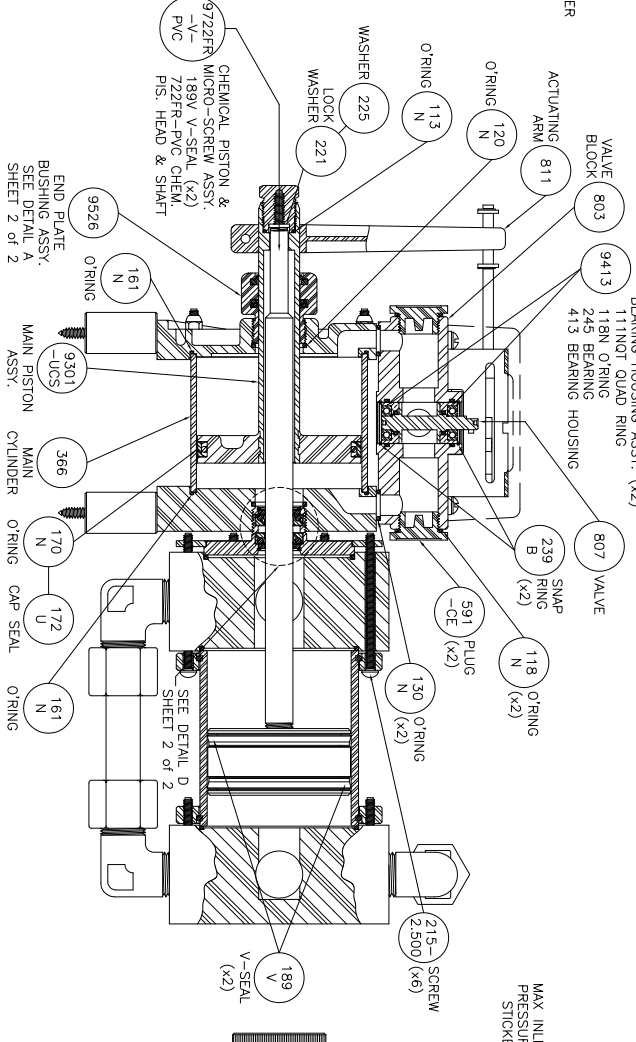
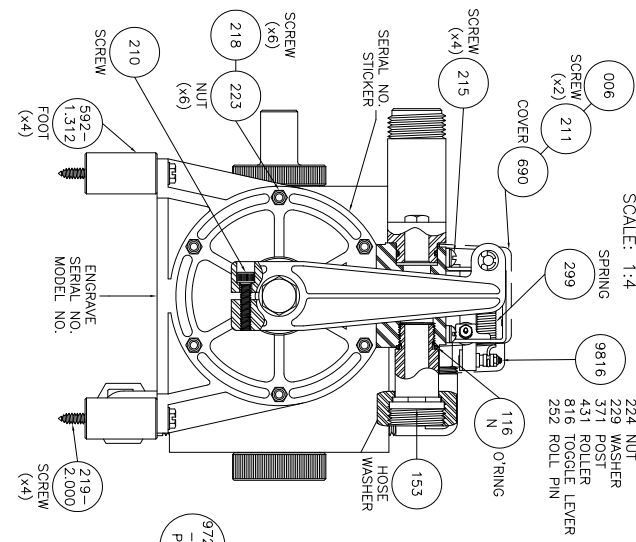
5301 SAWYER AVENUE BOISE, ID 83714
 PHONE: (208) 375-5000 www.hydroblend.com
 PART NUMBER: 057-FL6850/
 6850-A-V,VM

© AUTOMATIC DISPENSING SYSTEMS, INC. - FL6850-6850-A-V,VM.dwg



HYDRO-BLEND DETAIL B SCALE: 1:4

HYDRO-BLEND DETAIL C SCALE: 1:4



REVISION:
SEE SHEET 2 of 2

SHIPPING INFORMATION:
SMALL CROWN SYSTEM BOX = 001-5 (20 x 15 x 15)
FOAM PACKAGED
HYDRO-BLEND STAMP LOGO
MODEL NO. SERIAL NO. STICKER
LOWER LEFT HAND CORNER OF BOX

SUCTION TUBE ASSY NO. = 9288-V
OPERATING MANUAL REQUIRED
PUMP SCHEMATIC REQUIRED
9288-V SCHEMATIC REQUIRED
9364-750-V FOOT VALVE ASSY SCHEMATIC REQUIRED

SCALE	SHEET	DATE
1:3.5	1 of 2	09/30/11

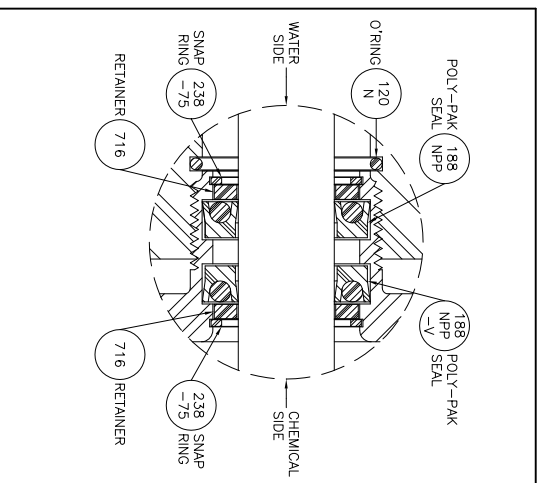
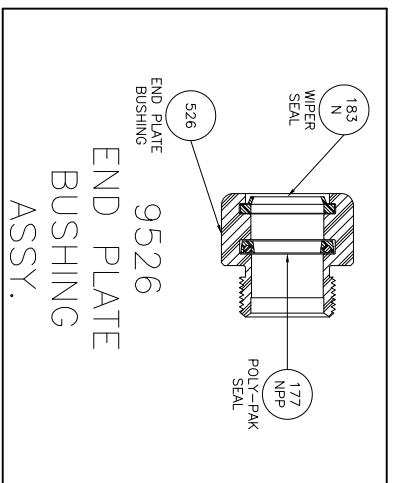
FORM BR:	CHECKED BY:	DESCRIPTION:
SC	DK	85oz. Fixed Ratio

5301 SAWYER AVENUE BOISE, ID 83714
 PHONE: (208) 375-5000 www.hydroblend.com



FL6850-A-V, VM

REVISION:



SHIPPING INFORMATION: SMALL CROWN SYSTEM BOX = 001-5 (20 x 15 x 15) FOAM PACKAGED HYDRO-BLEND STAMP LOGO MODEL NO. SERIAL NO. STICKER LOWER LEFT HAND CORNER OF BOX

SUCTION TUBE ASSY NO. = 9288-V

SCALE:

SHEET:

DATE:

C:\AUTOCAD\9288V-A-Series-Pump\7mm\83\FL6850-A-VM.dwg

OPERATING MANUAL REQUIRED PUMP SCHEMATIC REQUIRED 9288-V SCHEMATIC REQUIRED 9364-750-V FOOT VALVE ASSY SCHEMATIC REQUIRED

NOTED

2 of 2

09/30/11

9288-V SCHEMATIC REQUIRED

SC

7 GPM

DK

85oz. Fixed Ratio

DESCRIPTION:

85oz.

Fixed Ratio

5301 SAWYER AVENUE BOISE, ID 83714

PHONE: (208) 375-5000

www.hydroblend.com

www.hydroblend.com

FL6850-A-V, VM

FL6850-A-V, VM

FL6850-A-V, VM

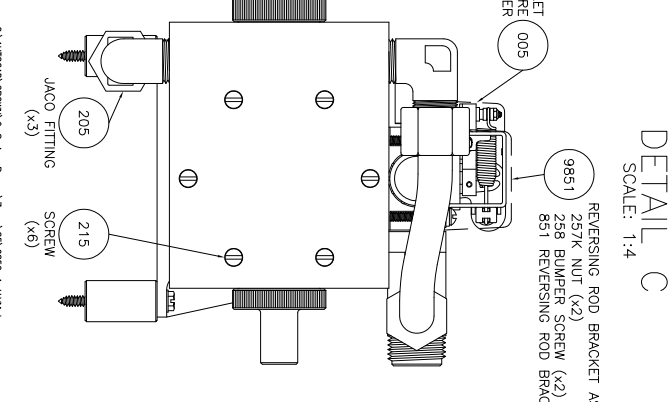
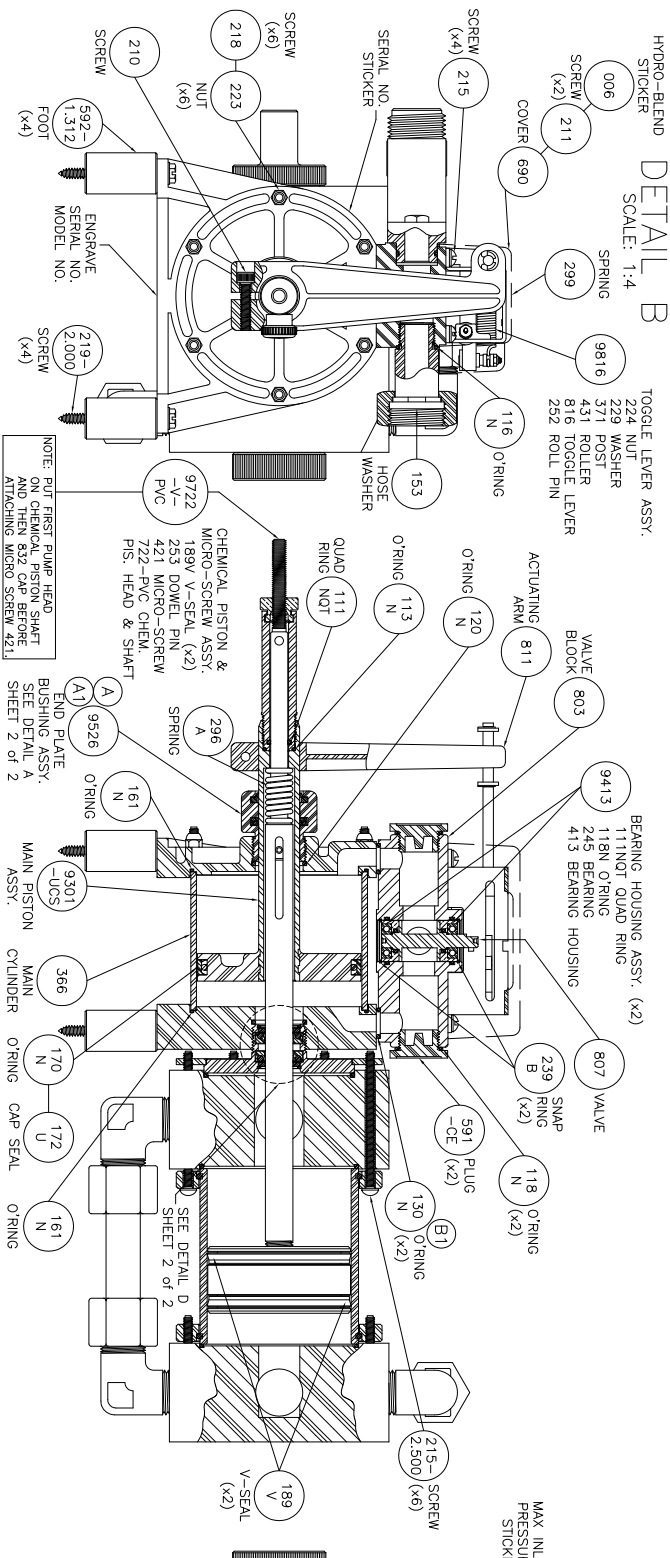
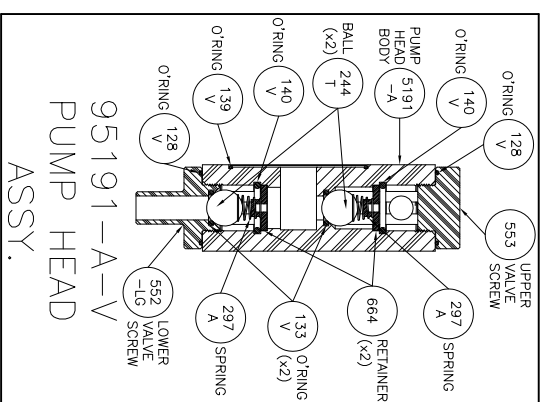
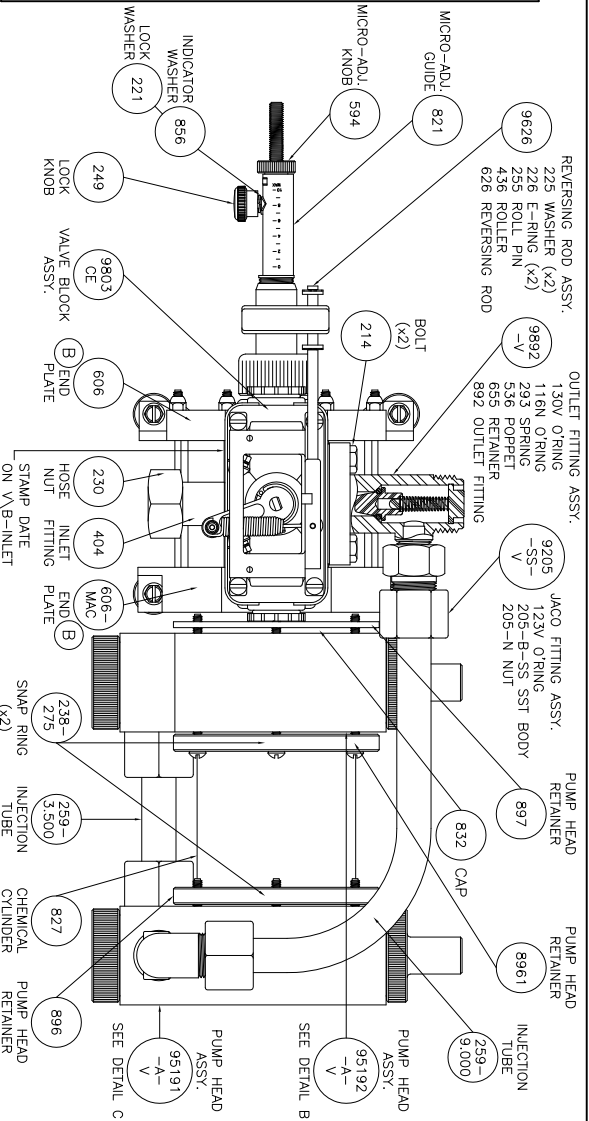
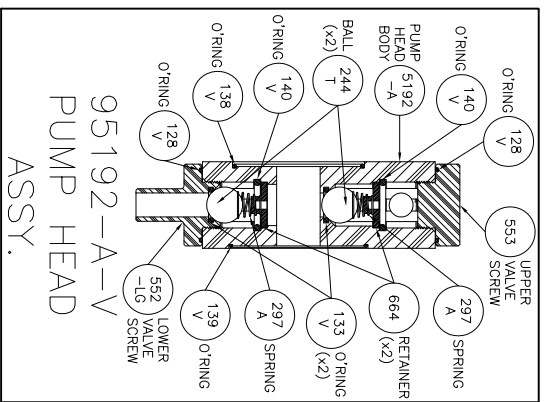
FL6850-A-V, VM

HYDRO-BLEND

HYDRO-BLEND

HYDRO-BLEND

HYDRO-BLEND



REVISION:
SEE SHEET 2 of 2

SHIPPING INFORMATION:
SMALL CROWN SYSTEM BOX = 001-5 (20 x 15 x 15)
FOAM PACKAGED
HYDRO-BLEND STAMP LOGO
MODEL NO. SERIAL NO. STICKER
LOWER LEFT HAND CORNER OF BOX

SUCTION TUBE ASSY NO. = 9288-V
OPERATING MANUAL REQUIRED
PUMP SCHEMATIC REQUIRED
9288-V SCHEMATIC REQUIRED
9364-750-V FOOT VALVE ASSY
SCHEMATIC REQUIRED

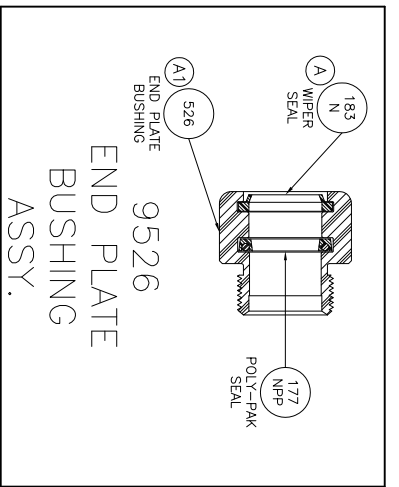
SCALE:	1:3.5	SHEET:	1 of 2	DATE:	10/05/00
DESIGNER:	SC	CHECKED BY:	DK	DESCRIPTION:	7 GPM
REVISION:	B1	REvised BY:	SC	DATE:	03/25/09

5301 SAWYER AVENUE BOISE, ID 83714
PHONE: (208) 375-5000 www.hydroblend.com

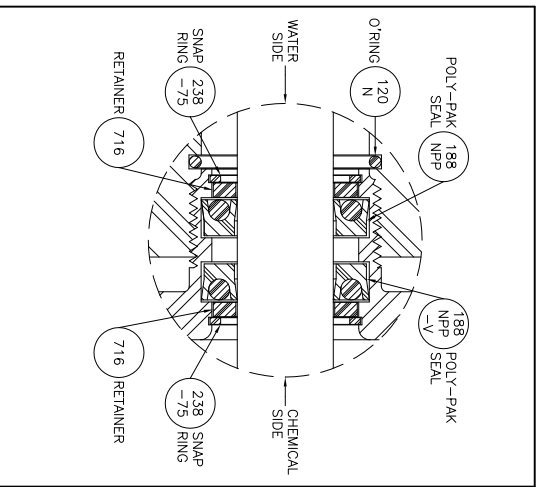


6850-A-V, VM

- REVISION:
- (A) WAS 178N DOUBLE LIP WIPER, 03/25/02.
 - (A1) WIPER SEAL GROOVE DIM. CHANGE, 03/25/02.
 - (B) ADDED O'RING COUNTER BORE TO TOP OF ENDPLATE, 10/17/07.
 - (B1) WAS 112N O'RING, 10/17/07.



DETAIL A
SCALE: 1:2



SHIPPING INFORMATION: SMALL CROWN SYSTEM BOX = 001-5 (20 x 15 x 15) FOAM PACKAGED HYDRO-BLEND STAMP LOGO MODEL NO. SERIAL NO. STICKER LOWER LEFT HAND CORNER OF BOX		SUCTION TUBE ASSY NO. = 9288-V OPERATING MANUAL REQUIRED PUMP SCHEMATIC REQUIRED 9288-V SCHEMATIC REQUIRED 9364-750-V FOOT VALVE ASSY SCHEMATIC REQUIRED	
SCALE:	SHEET:	DATE:	DATE:
NOTED	2 of 2	10/05/00	
DESIGNER:	CHECKED BY:	DATE:	
7 GPM	DK	8502.	
REVISION:	REVISION BY:	DATE:	
B1	SC	03/25/09	

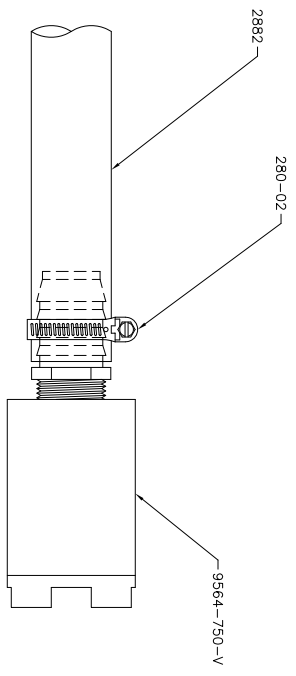
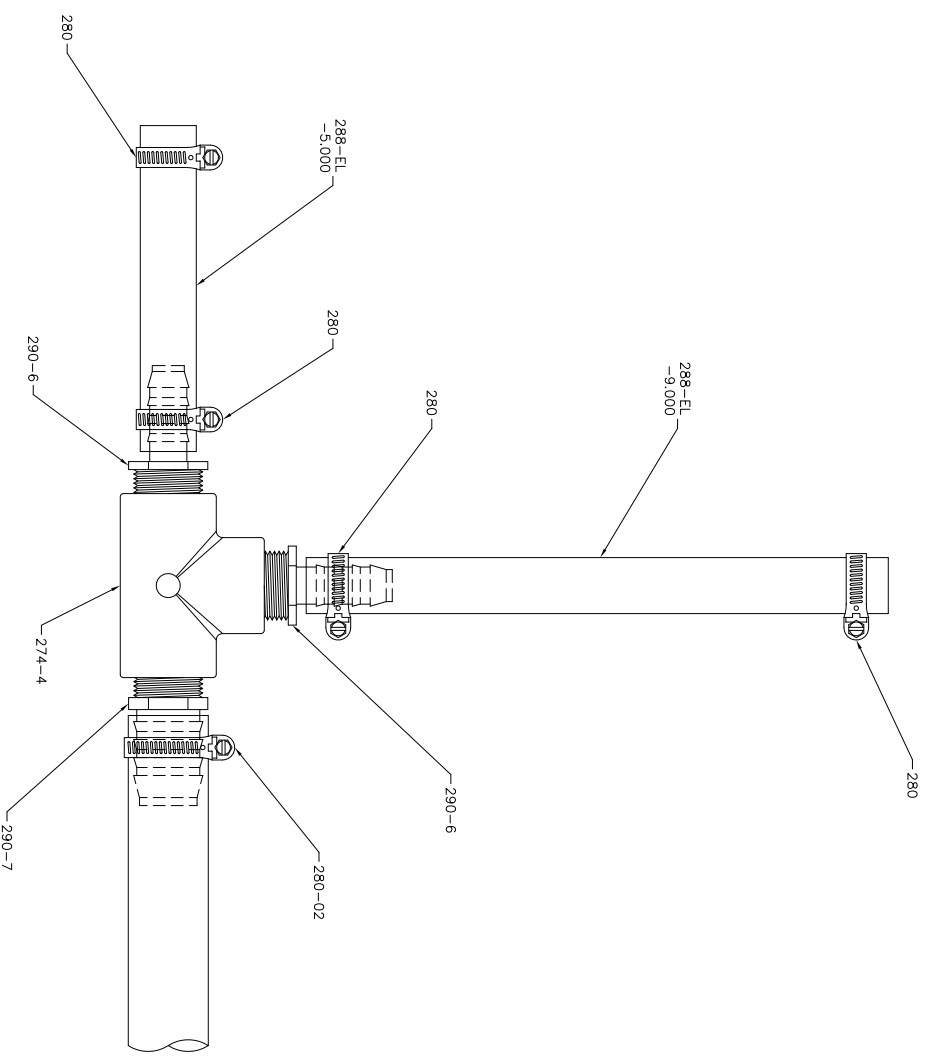
C:\AUTOCAD\CROWN\6-Series-Pumps\7mm\SA\6850-A-V.Mxd

HYDRO-BLEND

5301 SAWYER AVENUE BOISE, ID 83714
 PHONE: (208) 375-5000 www.hydroblend.com


6850-A-V, VM

PART NO.	DESCRIPTION	QTY.
274-4	Tee - 3/4 FNPT x 3/4 FNPT x 3/4 FNPT - Sch 80 PVC	1
280	Clamp, Hose - SAE #8 - SST	4
280-02	Clamp, Hose - SAE #16 - SST	2
288-EL-5,000	Suction Tube - Nylon Reinforced	1
288-EL-9,000	Suction Tube - Nylon Reinforced	1
290-6	Barb Fitting - Straight - 3/4 MNPT x 1/2 HB - Sch 80 PVC	2
290-7	Barb Fitting - Straight - 3/4 MNPT x 1.0 HB - Sch 80 PVC	1
2882	Suction Tube - Nylon Reinforced - 6FT	1
9564-750-V	Foot Valve Assembly - PVC - 3/4 FNPT - Viton Seals	1



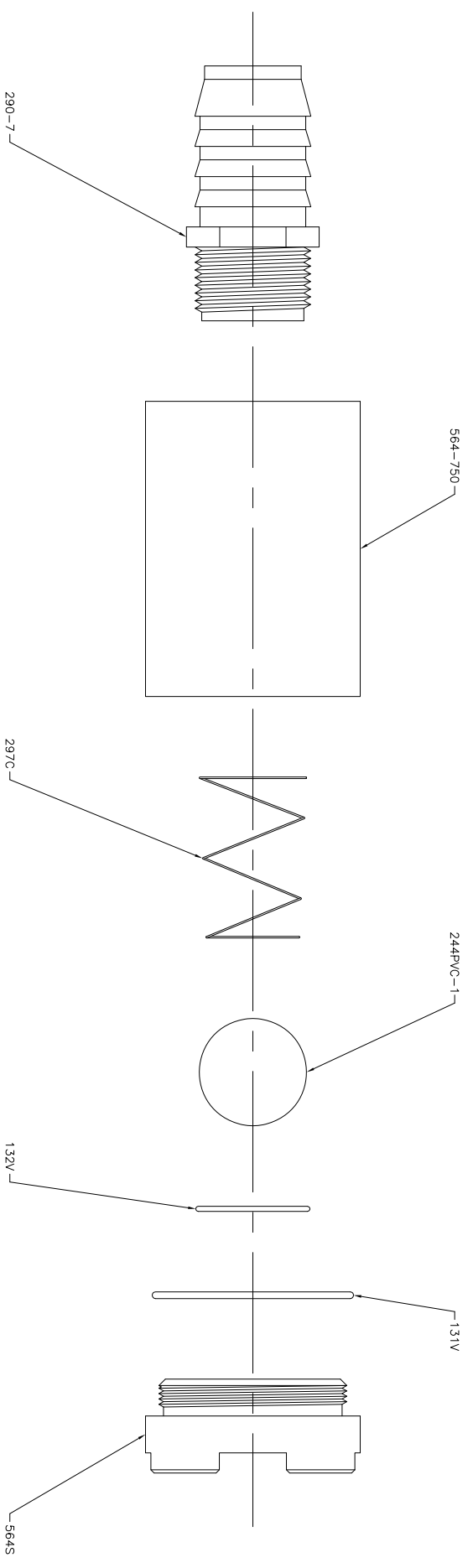
C:\AUTOCAD\9500M\Assembly\9288-V.dwg

SCALE:	SHEET:	DATE:
1:3	1 of 1	01/25/02
DRAWN BY:	CHECKED BY:	
SC	DK	
SERIES:	DESCRIPTION:	PART NUMBER:
	SUCTION TUBE ASSY.	9288-V
REVISION:	REvised BY:	DATE:
	SC	12/14/10



HYDRO-BLEND
5301 SAWYER AVENUE BOISE, ID 83714
PHONE: (208) 375-5000 www.hydroblend.com

PART NO.	DESCRIPTION	QTY.
131V	O'ring - 1-3/4 ID x 1-7/8 OD x 1/16 CS - 75 Brn Viton	1
132V	O'ring - 7/8 ID x 1-1/16 OD x 3/32 CS - 75 Brn Viton	1
244PVC-1	Ball - 1.0 DIA - Ground - PVC	1
290-7	Barb Fitting - Straight - 3/4 MNPT x 1.0 HB - Sch 80 PVC	1
297C	Spring - Hastalloy C-276	1
564-750	Foot Valve Body - 3/4 FNPT - PVC	1
564S	Foot Valve Seat - PVC	1



SCALE:	1:1.5	SHEET:	1 of 1	DATE:	10/28/05
DRAWN BY:	SC	CHECKED BY:	DK		
SERIES:	SC	DESCRIPTION:	FOOT VALVE ASSY.		
REVISION:	SC	REvised BY:	SC	DATE:	03/24/09

C:\AUTOCAD\9590M\Assembly\9564-750-1.dwg

HYDRO-BLEND
5301 SAWYER AVENUE BOISE, ID 83714
PHONE: (208) 375-5000 www.hydroblend.com

9564-750-V