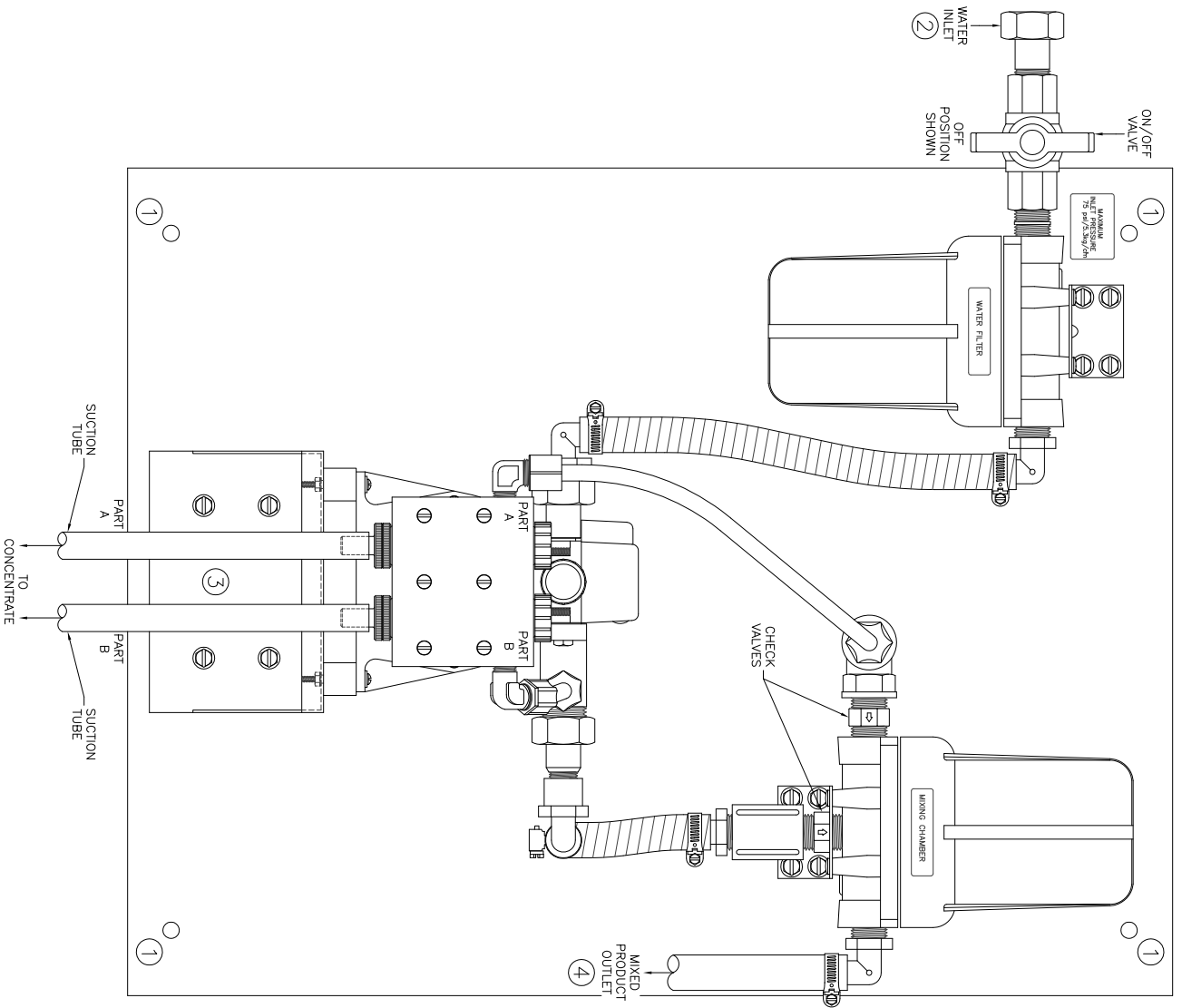


NOTICE

AFTER SHUTTING OFF WATER SOURCE, THE RIGHT MIXING CHAMBER WILL CONTINUE TO DRAIN APPROXIMATELY 1 PINT OF MIXED CHEMICAL. PLEASE ALLOW FOR THIS EXTRA VOLUME WHEN FILLING YOUR CONTAINER.




SYSTEM INSTALLATION

- ① MOUNTING HOLES FOR VERTICAL SURFACE (I.E. A WALL).
- ② WATER INLET
3/4 FEMALE GARDEN HOSE FITTING (MAKE SURE VALVE IS OFF WHEN INSTALLING).
- ③ CHEMICAL CONCENTRATE
PART A & PART B-ATTACH HOSES TO LOWER VALVE SCREW NIPPLES. DROP OPPOSITE ENDS WITH TUBE WEIGHTS INTO CONCENTRATE.
- ④ MIXED PRODUCT OUTLET
1/2 I.D. TUBING FOR OUTGOING PLUMBING.
- ⑤ START-UP OPERATION
OPEN VALVE ② SLOWLY UNTIL PUMP STARTS TO ACTUATE. CHEMICAL WILL BE DRAWN UP SUCTION TUBES.

SCALE:	1:4	SHEET:	1 of 2	DATE:	11/10/03
DRAWN BY:	SC	CHECKED BY:	DK		
SERIES:	7 GPM	DESCRIPTION:	ABS System		
DESIGNER:	SC	REvised BY:	SC	DATE:	02/06/14

C:\Autocad\Groom\System\ABS\061-15061-8917-DI-A-VM.dwg

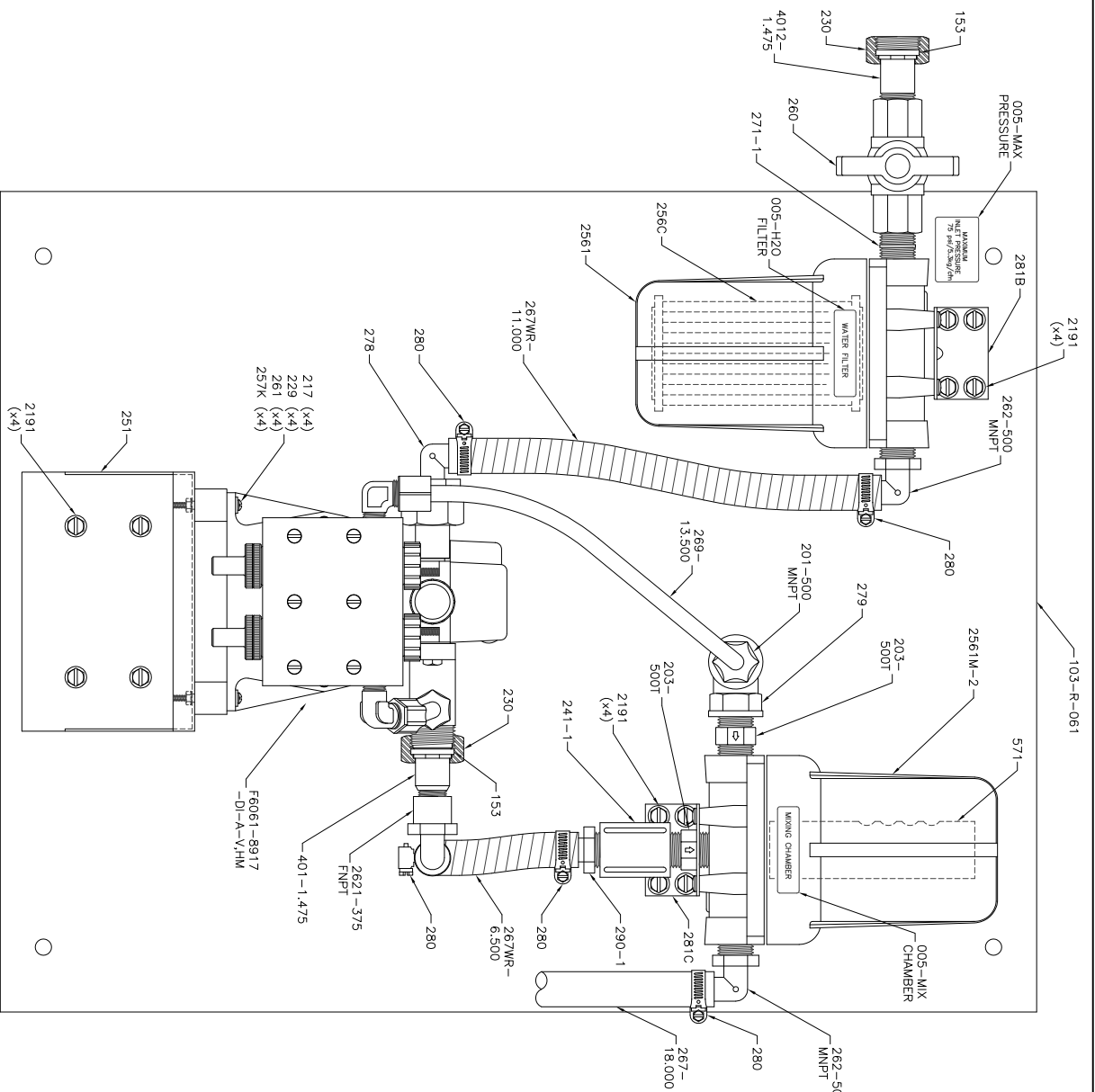


HYDRO-BLEND

5301 SAWYER AVENUE BOISE, ID 83714
 PHONE: (208) 375-5000 www.hydroblend.com

061-F6061-8917

-DI-A-V, VM



PART NO.	DESCRIPTION	QTY.
005-H2O FILTER	Sticker - Water Filter	1
005-MAX PRESSURE	Sticker - Water Inlet - Maximum Inlet Pressure	1
005-MIX CHAMBER	Sticker - Mixing Chamber	1
103-R-061	Backplate - 19.0 x 24.0 x .500 Thick - Polypro	1
153	Hose Washer - 3/4-GHT - Red Vinyl	2
201-500MNP	Jaco Male Connector - 3/8 Tube OD - 1/2 MNPT - Polypro	1
203-500T	Check Valve - 1/2 MNPT - Viton Seal - Teflon	2
217	Check Ball - Hastelloy Spring - Kynor Body	2
229	Screw - 6-32 x 1-1/2 - Round Head SLTD - 18-8 SST	4
230	Washer - .174 ID x 3/8 OD x .031 Thick - SST	4
230	Nut - Garden Hose - Wd 1-1/4 x Ht .630 - 3/4-11.5 NH - Electroless Nickel Plated Brass	2
241-1	Coupler - 1/2 FNPT - 1-5/8 Long - Sch 80 PVC	1
251	Shell - SST	1
256C	Filter Cartridge - 30 Micron	1
257K	Nut - Hex Keeps with Tooth Washer	4
260	Wd 5/16 x Ht .105 - 6-32 - Plated	1
261	Valve, Ball - 1/2 FNPT - Sch 80 PVC	1
262-500MNP	Foot - Rubber	4
267-18,000	Barb Fitting - 90 Degree - 1/2 MNPT x 1/2 HB - Polypro	2
267WR-6,500	Suction Tube	1
267WR-11,000	Wire Reinforced Hose	1
269-13,500	Wire Reinforced Hose	1
271-1	Injection Tube	1
278	Nipple - 1/2 MNPT - 1-1/2 Long - SST	1
279	Barb Fitting - 90 Degree - 3/4 MGH x 1/2 HB - Polypro	1
280	Elbow - 1/2 FNPT x 1/2 FNPT - Polypro	1
281B	Clamp, Hose - SAE #8 - SST	5
281C	Bracket, Mounting - Mixing Chamber/Water Filter - (Top Hole - Machined)	1
290-1	Barb Fitting - Straight - 1/2 MNPT x 1/2 HB - Polypro	1
401-1,475	Inlet Fitting - 3/8 MNPT - SST	1
571	Jet, Mixing Chamber - Sch 80 PVC	1
2191	Screw - #14 x 1/2 - Hex Washer Head SLTD - Plated	12
2561	Housing, Mixing Chamber/Water Filter - 1/2 FNPT	1
2561M-2	Housing, Mixing Chamber - 1/2 FNPT - (Top Hole - Machined)	1
2621-375FNPT	Barb Fitting - 90 Degree - 3/8 FNPT x 1/2 HB - Polypro	1
4012-1,475	Inlet Fitting - 1/2 MNPT - SST	1
F6061-8917-DI-A-V,VM	Hydo-Blend Proportioner	1

NOTICE:
 AFTER SHUTTING OFF WATER SOURCE, THE RIGHT MIXING CHAMBER WILL CONTINUE TO DRAIN APPROXIMATELY 1 PINT OF MIXED CHEMICAL. PLEASE ALLOW FOR THIS EXTRA VOLUME WHEN FILLING YOUR CONTAINER.

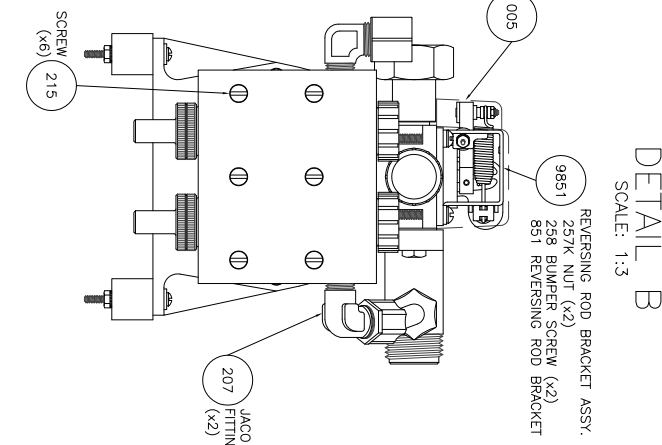
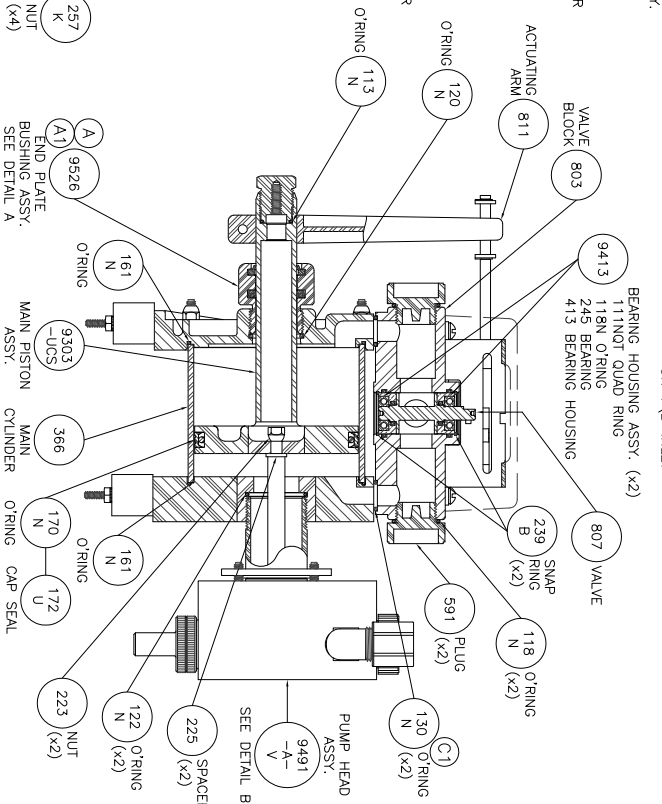
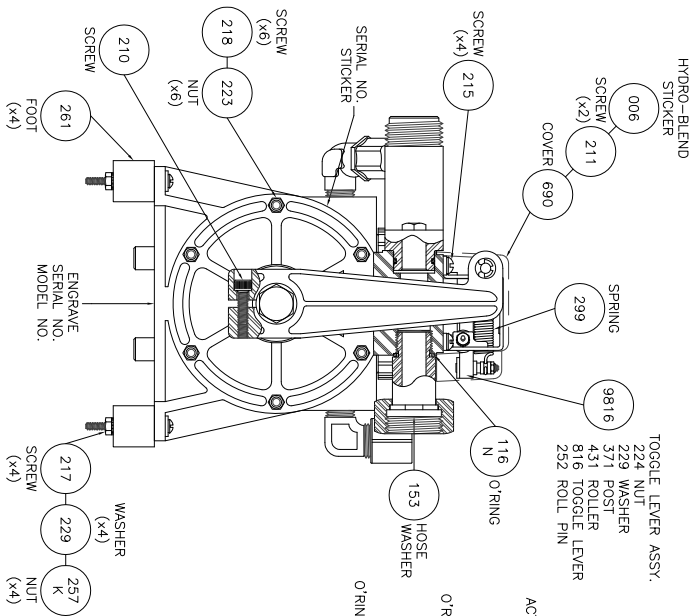
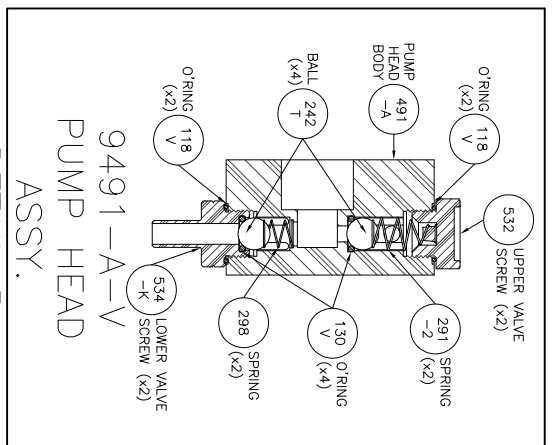
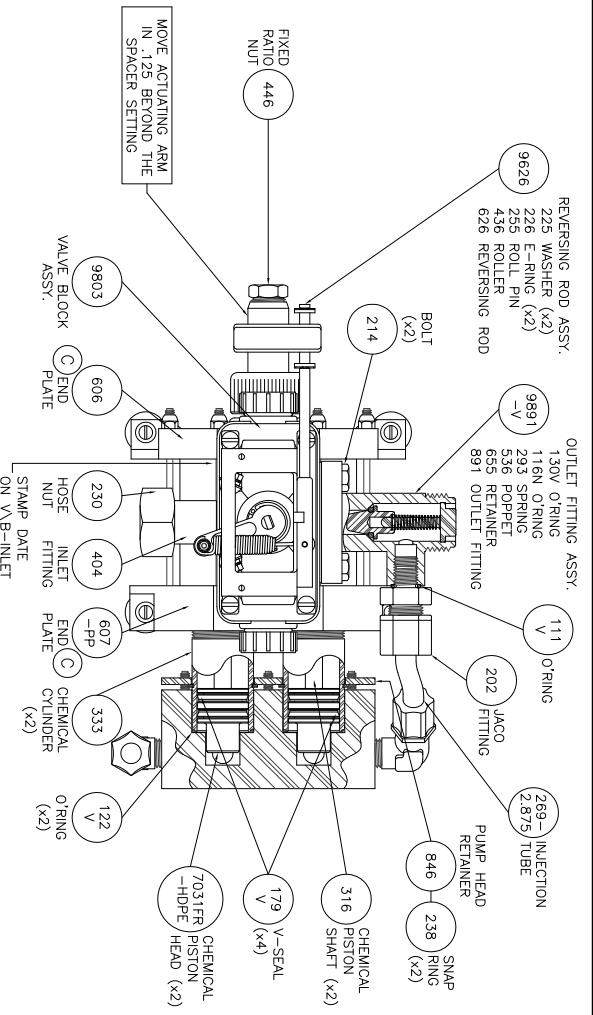
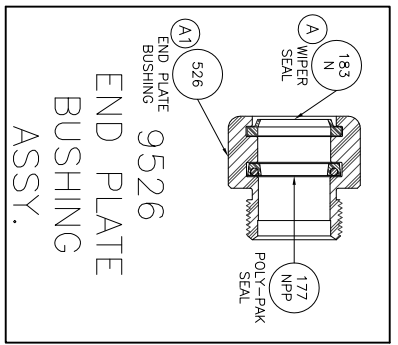
SHIPPING INFORMATION:
 SYSTEM BOX = 001-4
 FOAM PACKAGED (25 x 25 x 20)
 HYDRO-BLEND STAMP LOGO
 OPERATING MANUAL REQUIRED
 PUMP SCHEMATIC REQUIRED
 SYSTEM SCHEMATIC REQUIRED
 LOWER LEFT HAND CORNER OF BOX ABS SYSTEMS NOTICE REQUIRED

SCALE: 1:4
 SHEET: 2 of 2
 DATE: 11/10/03
 DRAWN BY: SC
 CHECKED BY: DK
 SERIES: 7 GPM
 DESCRIPTION: ABS System
 REVISION: A
 REVISION DATE: 02/06/14

REVISION: A WAS A 9247T FOOT VALVE. FOOT VALVE PART NO. 9402-375PVH (X2), 02/17/04.

5301 SAWYER AVENUE BOISE, ID 83714
 PHONE: (208) 375-5000 www.hydroblend.com

HYDRO-BLEND®
 061-F6061-8917
 -DI-A-V,VM



DETAIL A
SCALE: 1:2

DETAIL B
SCALE: 1:3

REVISION:

- (A) WAS 178N DOUBLE LIP WIPER, 03/25/02.
- (A1) WIPER SEAL GROOVE DIM. CHANGE, 03/25/02.
- (B) WAS A 9247T FOOT VALVE. FOOT VALVE PART NO. 9402-375PVM (X2), 02/17/04.
- (C) ADDED O-RING COUNTER BORE TO TOP OF ENDPLATE, 10/17/07.
- (C1) WAS 112N O-RING, 10/17/07.

SHIPPING INFORMATION:

- (A) LARGE BOX = 001-2
- (A1) TOP INSERT = 001-2A
- (B) MIDDLE INSERT = 001-2B
- (C) BOTTOM INSERT = 001-2C
- (C1) HYDRO-BLEND STAMP LOGO
- (B) FOOT VALVE NO. = 402-375PVM (X2)
- (C) TUBE WEIGHT NO. = 402-745 (X2)
- (C1) SUCTION TUBE NO. = 266 (X2)
- (C) OPERATING MANUAL REQUIRED
- (C1) PUMP SCHEMATIC REQUIRED
- (C) MODEL NO. SERIAL NO. STICKER
- (C1) LOWER LEFT HAND CORNER OF BOX

SCALE: 1:3.5 SHEET: 1 of 1 DATE: 08/19/98

DESIGNER: SC CHECKED BY: DK DATE: 01/30/14



5301 SAWYER AVENUE BOISE, ID 83714
 PHONE: (208) 375-5000 www.hydroblend.com
 F6061-8917-
 DI-A-V, HM