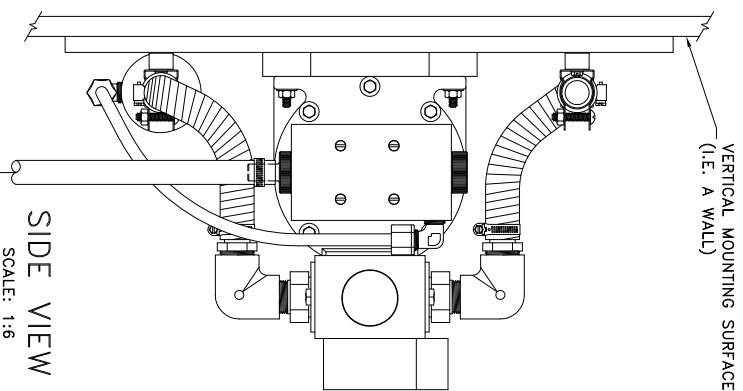
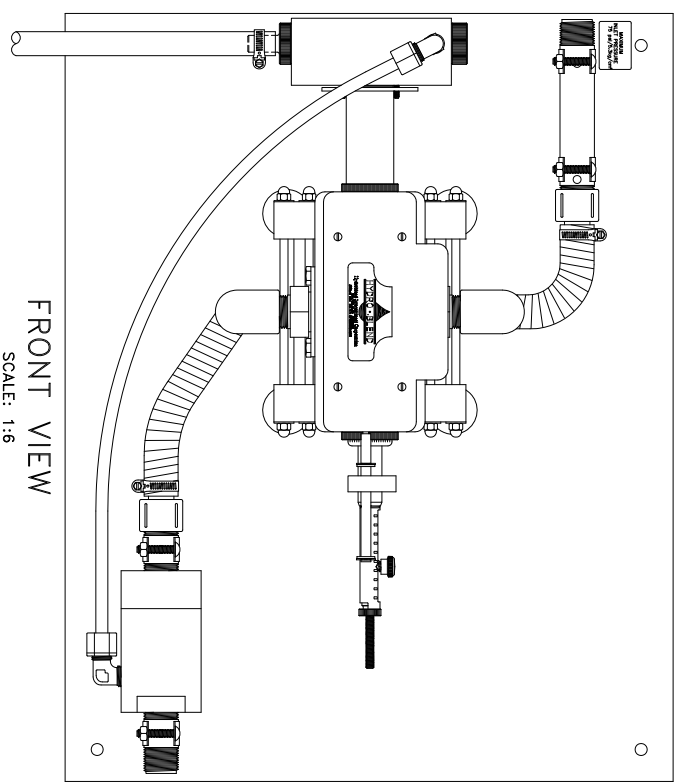


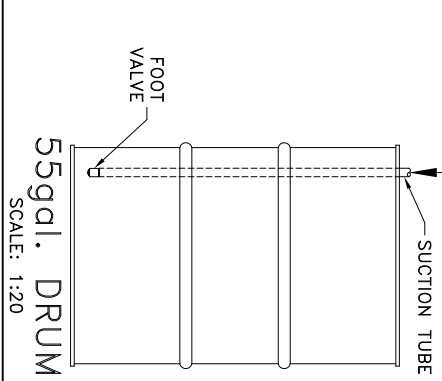
NOTE: HYDRO-BLEND VERTICAL MOUNT SYSTEM PART NUMBERS CONTAIN THE ABBREVIATION "VM"
 THIS ABBREVIATION DENOTES THE SYSTEMS MOUNTING ORIENTATION (SEE PACKING SLIP FOR PUMP NUMBER)
VM = VERTICAL MOUNT - DESIGNED TO MOUNT ON A VERTICAL SURFACE (I.E. A WALL)



SIDE VIEW
SCALE: 1:6



FRONT VIEW
SCALE: 1:6

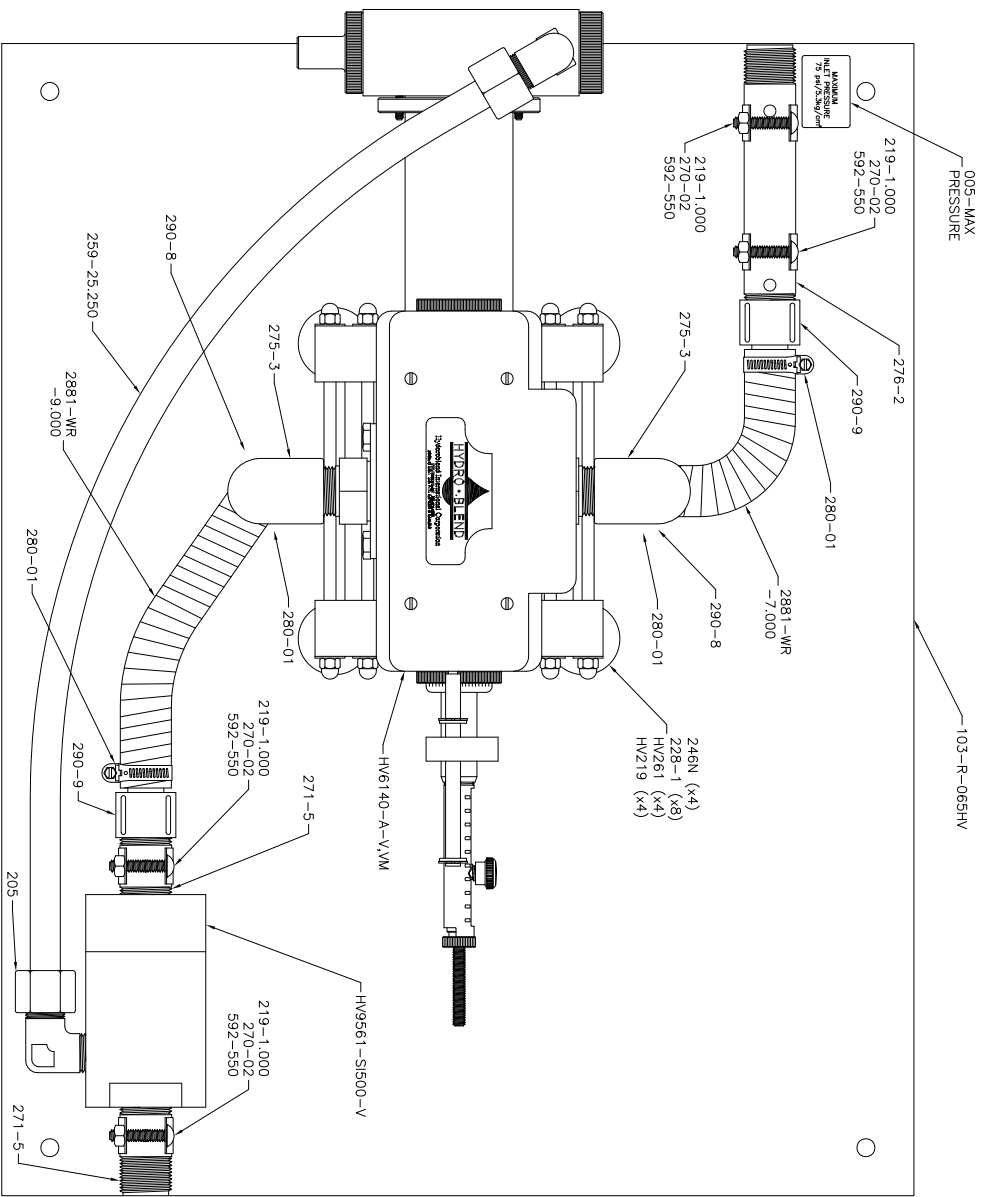


55gal. DRUM
SCALE: 1:20

SCALE:		SHEET:		DATE:	
NOTED		1 of 1		02/18/08	
DRAWN BY:		CHECKED BY:		DATE:	
SC		DK		08/08/11	
SERIES:		DESCRIPTION:		PART NUMBER:	
SC		SC		-065HV- MOUNTING INSTRUCTIONS VERTICAL MOUNT	

C:\MUNDOO\CGMWA\Spec-Mounting-Instructions\065HV-VM-Mounting-Instructions.dwg

5301 SAWYER AVENUE BOISE, ID 83714
PHONE: (208) 375-5000 www.hydroblend.com



PART NO.	DESCRIPTION	QTY.
005-MAX PRESSURE	Sticker - Water Inlet - Maximum Inlet Pressure	1
103-R-065HV	Backplate - 19.0 x 24.0 x .500 Thick - Polypro	1
205	Jaco Male Elbow - 5/8 Tube OD - 1/2 MNPT - Polypro	1
219-1.000	Screw - #10 x 1.0 - Hex Washer Head SLTD	4
228-1	Washer - .281 ID x 5/8 OD x .038 Thick - SST	8
246N	Nut - Hex - Wd 7/16 x Ht Full - 1/4-20 - 18-8 SST	4
259-25.250	Injection Tube	1
270-02	Clamp, Pipe - 3/4 Dia. - Plated	4
271-5	Nipple - 3/4 MNPT - 2-1/2 Long - Sch 80 PVC	2
275-3	Elbow - 3/4 FNPT x 3/4 FNPT - Sch 80 PVC	2
276-2	Nipple - 3/4 MNPT - 6.0 Long - Sch 80 PVC	1
280-01	Clamp, Hose - SAE #10 - SST	4
290-8	Barb Fitting - Straight - 3/4 MNPT x 3/4 HB - Sch 80 PVC	2
290-9	Barb Fitting - Straight - 3/4 FNPT x 3/4 HB - Sch 80 PVC	2
592-550	Spacer - Acetel	4
2881-WR-7.000	Wire Reinforced Hose	1
2881-WR-9.000	Wire Reinforced Hose	1
HW219-2.000	Bolt - 1/4-20 x 2.0 - Hex Head - 18-8 SST	4
HW261	Foot - Rubber	4
HV6140-A-V,VM	Hydro-Blend Proportioner	1
HV9561-SI500-V	Check Valve Assembly - 3/4 FNPT - 1/2 FNPT (Single Injection) - Viton - PVC Ball - Hastelloy Spring - PVC Body	1

REVISION:

SHIPPING INFORMATION:
 SYSTEM BOX = 001-7
 FOAM PACKAGED (31 x 24 x 19)
 HYDRO-BLEND STAMP LOGO
 MODEL NO. SERIAL NO. STICKER
 LOWER LEFT HAND CORNER OF BOX

TUBE WEIGHT NO. = 402-625
 SUCTION TUBE NO. = 288
 OPERATING MANUAL REQUIRED
 PUMP SCHEMATIC REQUIRED

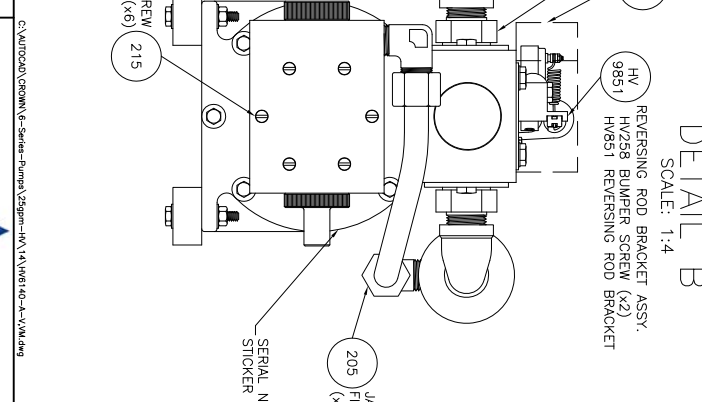
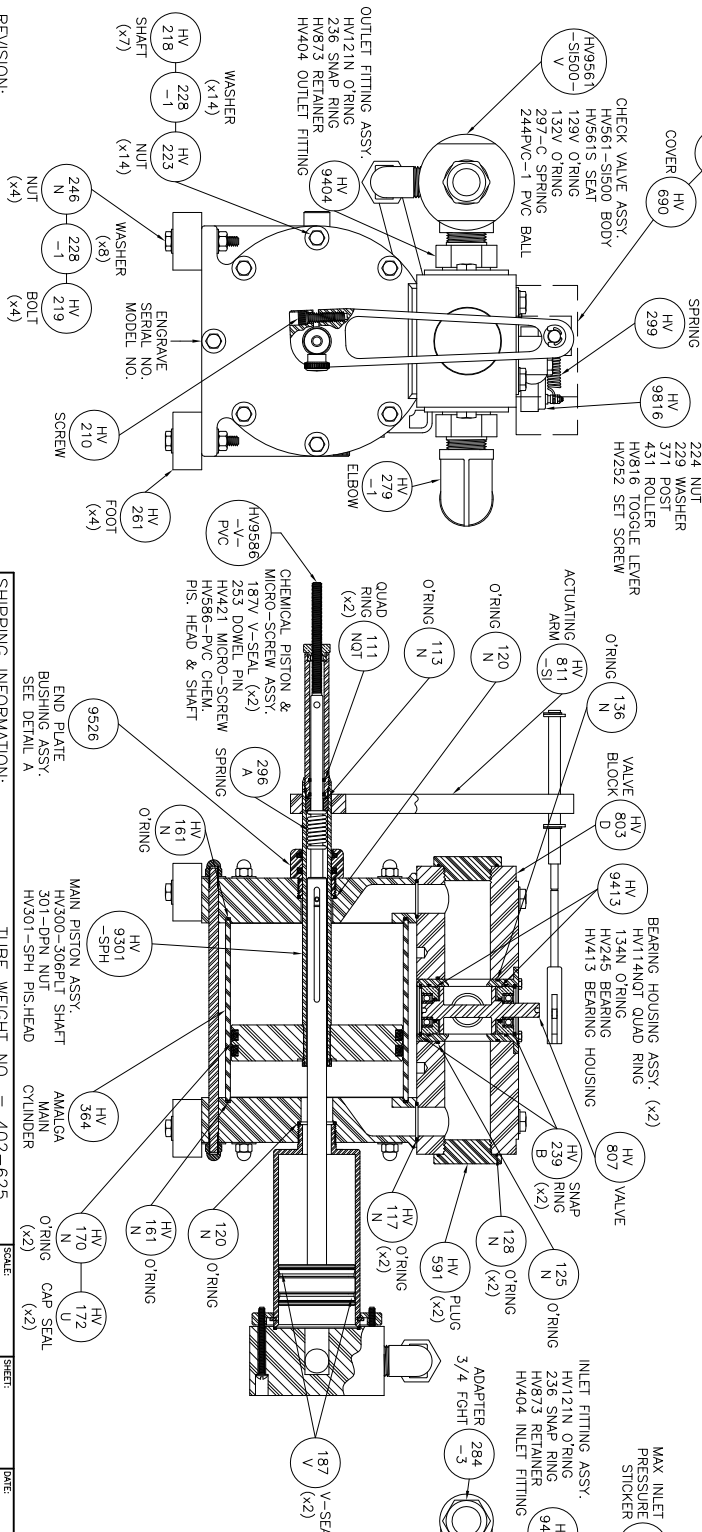
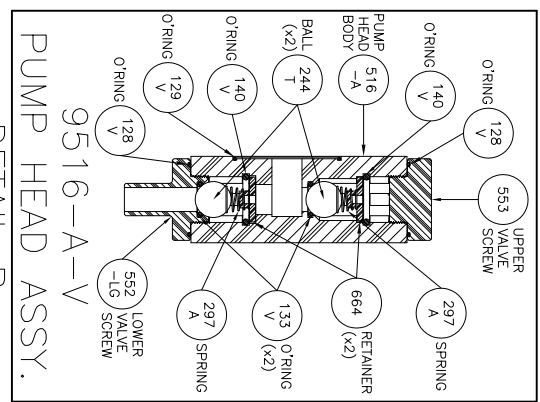
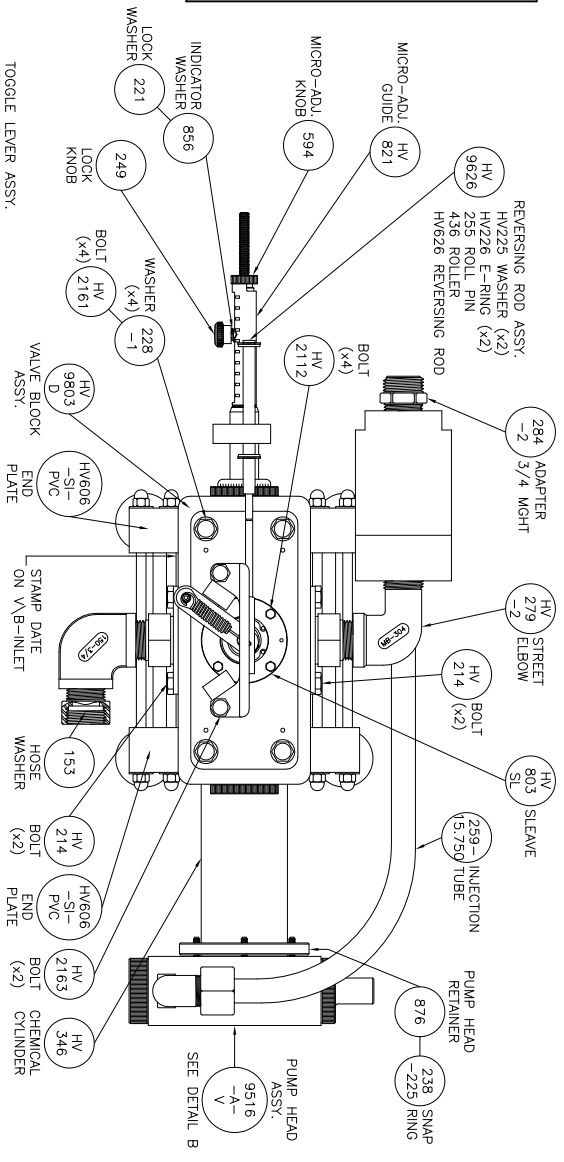
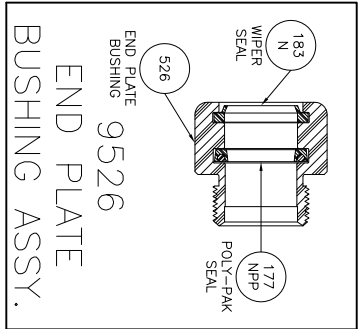
SCALE	SHEET	DATE
1:4	1 of 1	02/22/08
DESIGNER:	CHECKED BY:	DATE:
SC	DK	
SERIES:	DESCRIPTION:	
24 GPM	065HV-System	
DESIGNER:	REvised BY:	DATE:
SC	SC	12/27/11

C:\Autocad\CPROM\System\Stdsw-4061-40-A-V,VM.dwg



HYDRO-BLEND

5301 SAWYER AVENUE BOISE, ID 83714
 PHONE: (208) 375-5000 www.hydroblend.com
065HV-HV6140
 -A-V,VM



REVISION:

- 218 HV SHAFT (x7)
- 228 HV WASHER (x14)
- 223 HV NUT (x14)
- 246 HV NUT (x4)
- 228 HV WASHER (x8)
- 219 HV BOLT (x4)
- 210 HV SCREW (x4)
- 261 HV FOOT (x4)
- 279 HV ELBOW (x4)
- 299 HV SPRING
- 9816 HV LOCK WASHER
- 224 HV NUT
- 229 HV WASHER
- 371 HV POST
- 431 HV ROLLER
- HV816 HV ToggLe LEVER
- HV252 HV SET SCREW
- 221 HV WASHER
- 856 HV INDICATOR WASHER
- 249 HV LOCK KNOB
- 594 HV MICRO-ADJ. KNOB
- 821 HV MICRO-ADJ. GUIDE
- 9826 HV HV225 HV WASHER (x2)
- 252 HV ROLLER
- HV828 HV REVERSING ROD
- 284 HV ADAPTER -2
- 279 HV STREET ELBOW -2
- 214 HV BOLT (x2)
- 803 HV SLEEVE SL
- 259 HV INJECTION TUBE (5.750)
- 876 HV PUMP HEAD RETAINER
- 238 HV SNAP RING -225
- 9516 HV PUMP HEAD ASSY.
- 216 HV BOLT END PLATE
- 214 HV BOLT END PLATE
- 214 HV BOLT END PLATE
- 216 HV BOLT END PLATE
- 346 HV CHEMICAL CYLINDER
- 005 HV MAX INLET PRESSURE STICKER
- 9404 HV HV121N O-RING
- 9851 HV HV258 BUMPER SCREW (x2)
- HV851 HV REVERSING ROD BRACKET
- 205 HV JACO FITTING (x2)
- 215 HV SCREW (x6)

SHIPPING INFORMATION:
SYSTEM BOX = 001-4
FOAM PACKAGED (25 x 25 x 20)

TUBE WEIGHT NO. = 402-625
SUCTION TUBE NO. = 288
OPERATING MANUAL REQUIRED
PUMP SCHEMATIC REQUIRED

SCALE: 1:5
SHEET: 1 of 1
DATE: 07/07/06

5301 SAWYER AVENUE BOISE, ID 83714
PHONE: (208) 375-5000 www.hydroblend.com



HV6140-A-V, VM