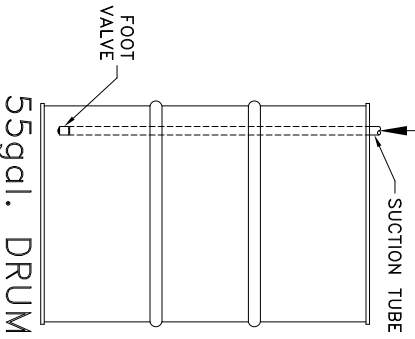
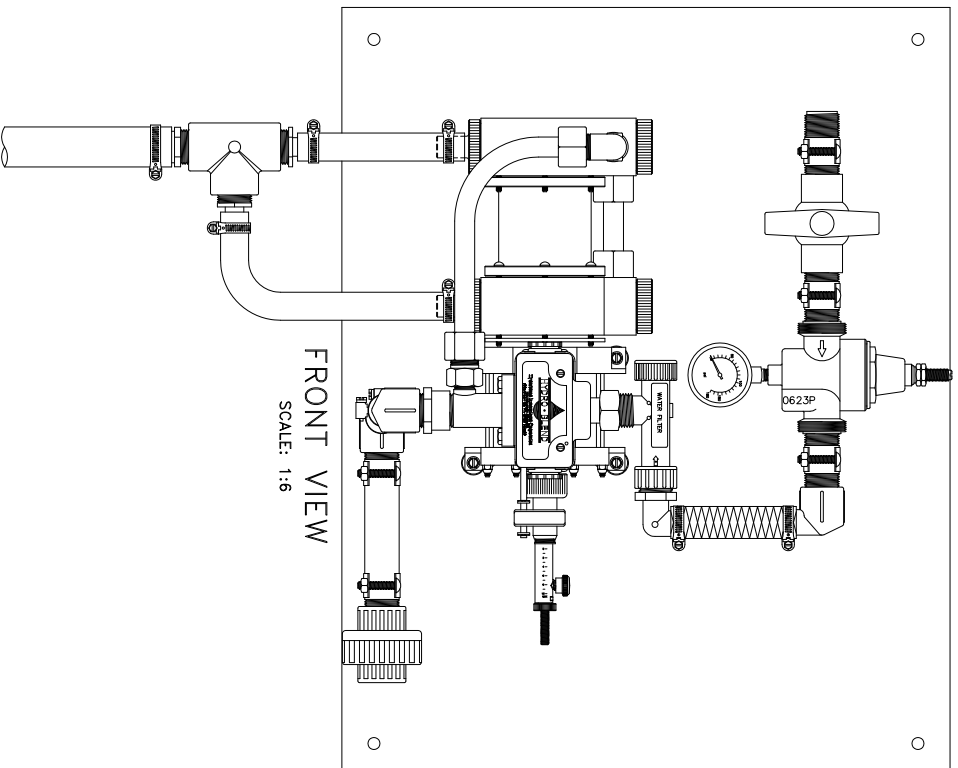
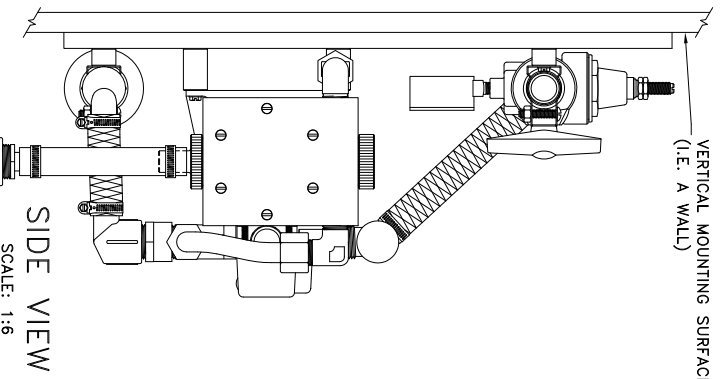

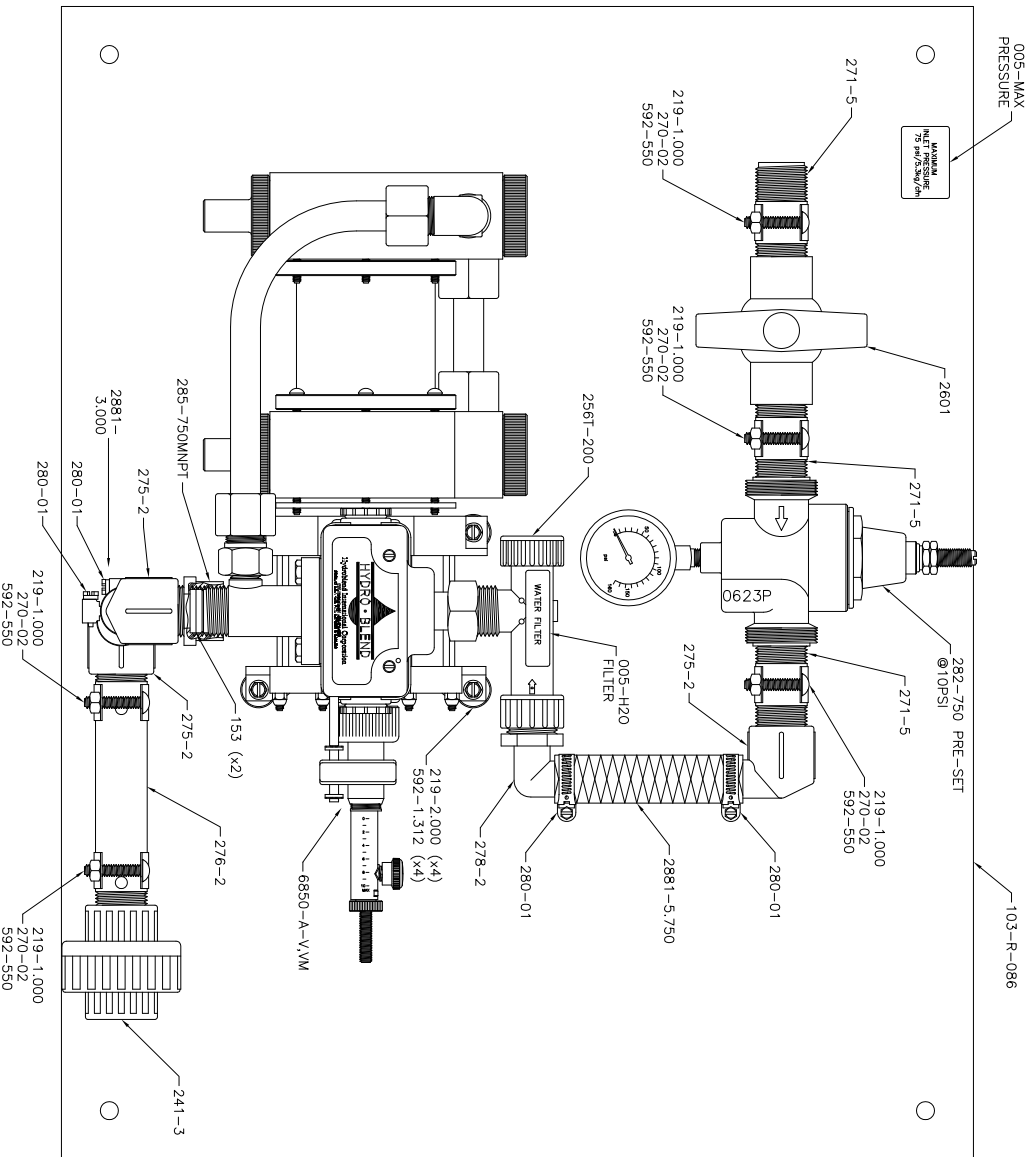


NOTE: HYDRO-BLEND VERTICAL MOUNT SYSTEM PART NUMBERS CONTAIN THE ABBREVIATION "VM"
 THIS ABBREVIATION DENOTES THE SYSTEMS MOUNTING ORIENTATION (SEE PACKING SLIP FOR PUMP NUMBER)

VM = VERTICAL MOUNT - DESIGNED TO MOUNT ON A VERTICAL SURFACE (I.E. A WALL)



SCALE:	SHEET:	DATE:	C:\MUNDOO\GORMAN\Open-Mounting-Instructions\086-(850)-VM-Mounting-Instructions.dwg	
NOTED	1 of 1	08/21/07		
DRAWN BY:	CHECKED BY:			
SC	DK			
SERIES:	DESCRIPTION:			
REVISION:	REvised BY:	DATE:		
	SC	12/29/08		
			 HYDRO-BLEND 5301 SAWYER AVENUE BOISE, ID 83714 PHONE: (208) 375-5000 www.hydroblend.com MOUNTING INSTRUCTIONS -086- VERTICAL MOUNT	



REVISION:

SHIPPING INFORMATION:
SYSTEM BOX = 001-4
FOAM PACKAGED (25 x 25 x 20)

SUCTION TUBE ASSY NO.
= 9288-V

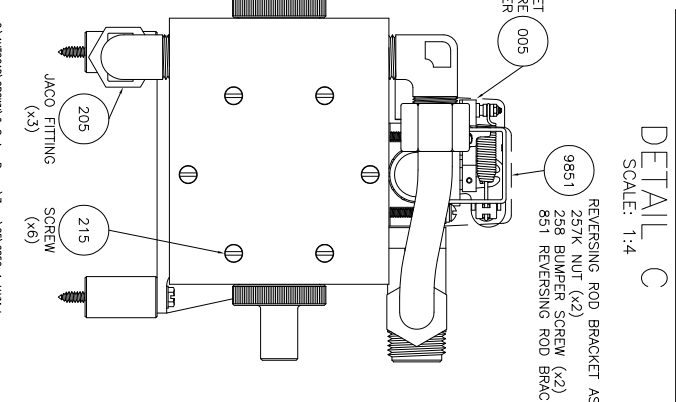
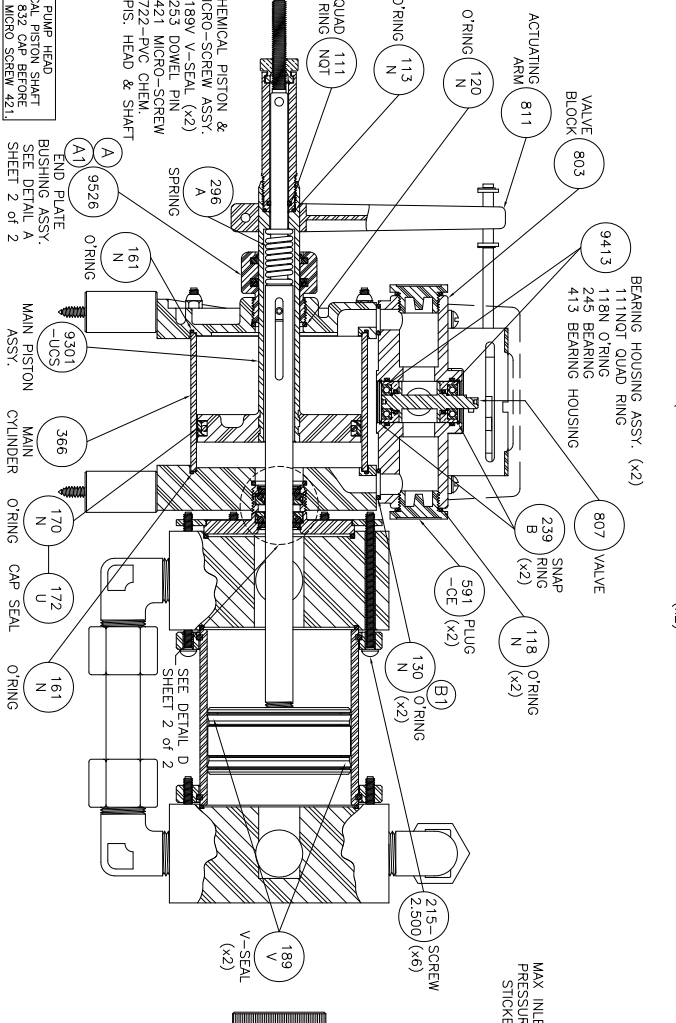
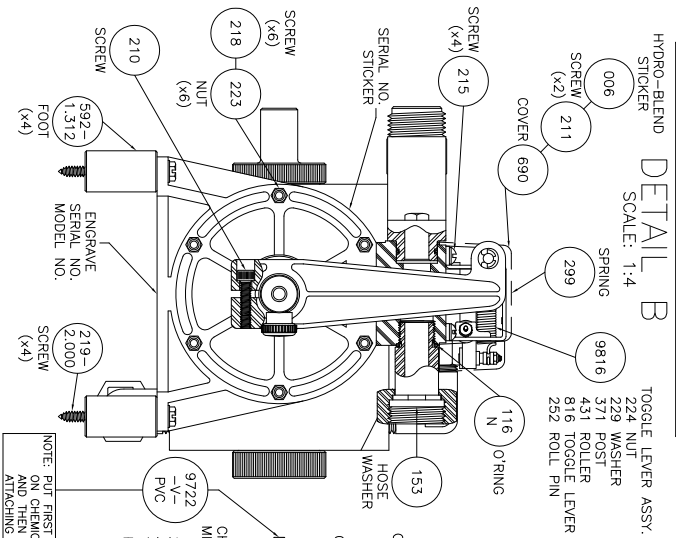
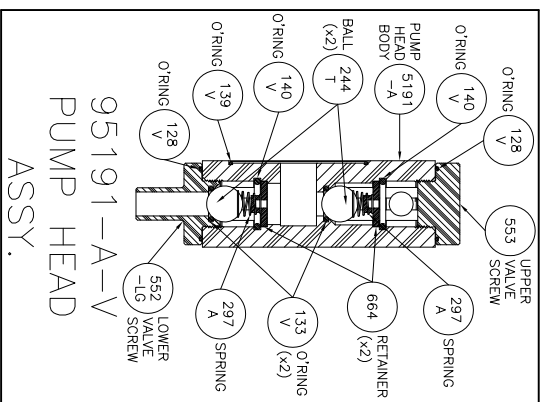
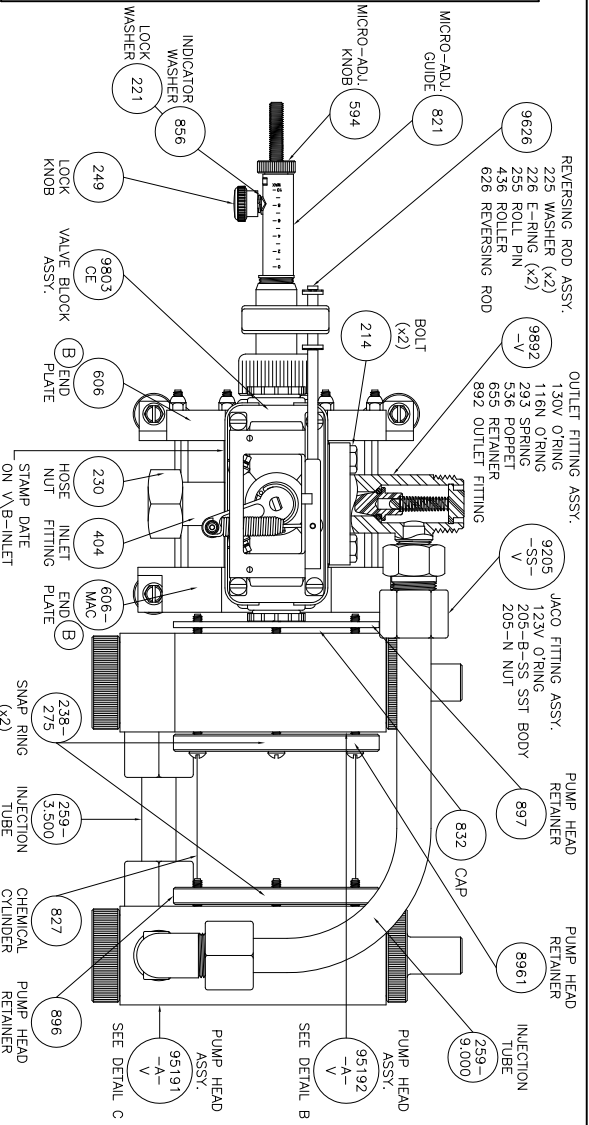
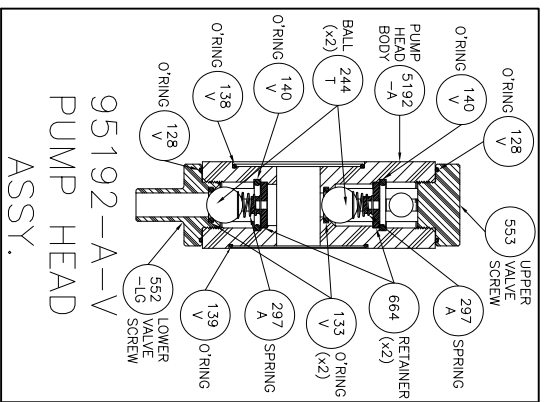
HYDRO-BLEND STAMP LOGO
MODEL NO. SERIAL NO. STICKER
LOWER LEFT HAND CORNER OF BOX
OPERATING MANUAL REQUIRED
PUMP SCHEMATIC REQUIRED
SYSTEM SCHEMATIC REQUIRED
9288-V SCHEMATIC REQUIRED
9564-750-V FOOT VALVE ASSY.
SCHEMATIC REQUIRED

PART NO.	DESCRIPTION	QTY.
005-H2O FILTER	Sticker - Water Filter	1
005-MAX PRESSURE	Sticker - Water Inlet - Maximum Inlet Pressure	1
103-R-086	Backplate - 19.0 x 24.0 x .500 Thick - Polypro	1
153	Hose Washer - 3/4-GHT - Red Vinyl	2
219-1,000	Screw - #10 x 1.0 - Hex Washer Head SLTD - Plated	5
219-2,000	Screw - #10 x 2.0 - Hex Washer Head SLTD - Plated	4
241-3	Union - 3/4 FNPT - (Viton O'ring) - Sch 80 PVC	1
256T-200	Tee Housing & Filter Assy - 3/4 FGHT x 3/4 MGHT - (200 Mesh/55 Micron Filter Cartridge)	1
270-02	Clamp, Pipe - 3/4 Dia. - Plated	5
271-5	Nipple - 3/4 MNPT - 2-1/2 Long - Sch 80 PVC	3
275-2	Barb Fitting - 90 Degree - 3/4 FNPT x 3/4 HB - Sch 80 PVC	3
276-2	Nipple - 3/4 MNPT - 6.0 Long - Sch 80 PVC	1
278-2	Barb Fitting - 90 Degree - 3/4 MGHT x 3/4 HB - Polypro	1
280-01	Clamp, Hose - SAE #10 - SST	4
282-750	Regulator, Water Pressure - 3/4 FNPT - 10-35PSI - (Gauge Included)	1
285-750MNP	Adaptor - 3/4 FGHT x 3/4 MNPT - Nylon	1
592-1,312	Spacer - Acetal	4
592-550	Spacer - Acetal	5
2601	Valve, Ball - 3/4 FNPT - (Viton O'ring) - Sch 80 PVC	1
2881-3,000	Nylon Reinforced Hose	1
2881-5,750	Nylon Reinforced Hose	1
6850-A-V,VM	Hydro-Blend Proportioner	1

C:\Autocad\9288V\System\9288-6850-A-V,VM.dwg

SCALE	SHEET	DATE
1:4	1 of 1	02/15/05
DESIGNER:	CHECKED BY:	DATE:
SC	DK	
REVISION:	REVISION BY:	DATE:
7 GPM	SC	01/03/12

5301 SAWYER AVENUE BOISE, ID 83714
 PHONE: (208) 375-5000 www.hydroblend.com
HYDRO-BLEND
 086-6850-A-V,VM



REVISION:
SEE SHEET 2 of 2

SHIPPING INFORMATION:
SMALL CROWN SYSTEM BOX
= 001-5 (20 x 15 x 15)
FOAM PACKAGED
HYDRO-BLEND STAMP LOGO
MODEL NO. SERIAL NO. STICKER
LOWER LEFT HAND CORNER OF BOX

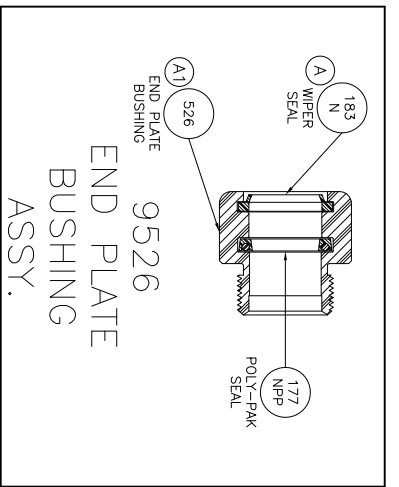
SUCTION TUBE ASSY NO. = 9288-V
OPERATING MANUAL REQUIRED
PUMP SCHEMATIC REQUIRED
9288-V SCHEMATIC REQUIRED
9364-750-V FOOT VALVE ASSY
SCHEMATIC REQUIRED

1.3.5
SC
7 GPM
85oz.
10/05/00
DK
03/25/09

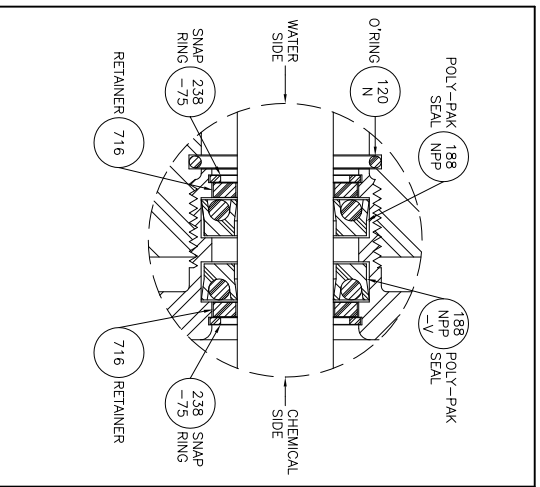


5301 SAWYER AVENUE BOISE, ID 83714
PHONE: (208) 375-5000 www.hydroblend.com
6850-A-V, VM

- REVISION:
- (A) WAS 178N DOUBLE LIP WIPER, 03/25/02.
 - (A1) WIPER SEAL GROOVE DIM. CHANGE, 03/25/02.
 - (B) ADDED O'RING COUNTER BORE TO TOP OF ENDPLATE, 10/17/07.
 - (B1) WAS 112N O'RING, 10/17/07.



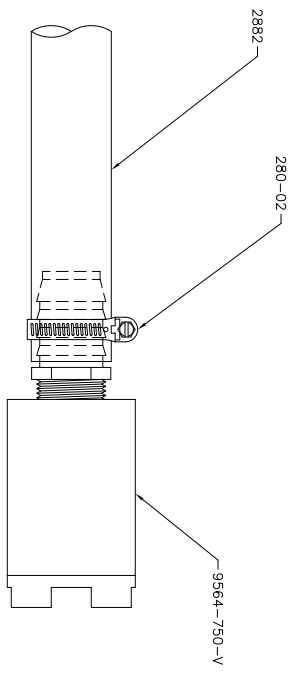
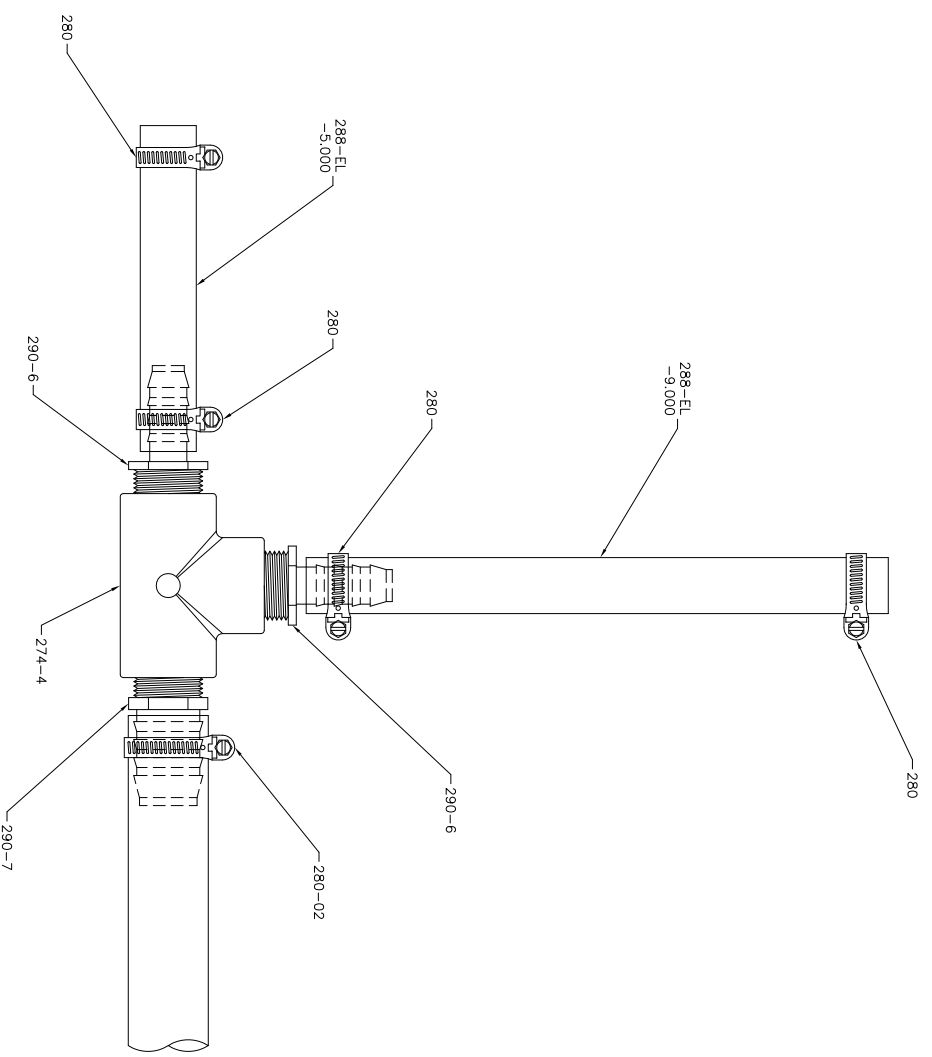
DETAIL A
SCALE: 1:2



DETAIL D
SCALE: 1:1


SHIPPING INFORMATION: SMALL CROWN SYSTEM BOX = 001-5 (20 x 15 x 15) FOAM PACKAGED HYDRO-BLEND STAMP LOGO		SUCTION TUBE ASSY NO. = 9288-V		OPERATING MANUAL REQUIRED PUMP SCHEMATIC REQUIRED 9288-V SCHEMATIC REQUIRED 9364-750-V FOOT VALVE ASSY SCHEMATIC REQUIRED	
MODEL NO. SERIAL NO. STICKER LOWER LEFT HAND CORNER OF BOX	SCALE:	NOTED	SHEET	DATE:	C:\AUTOCAD\PROGRAMS-Service-Pumps\7mm\83\6850-A-V.Mxd
		7 GPM	2 of 2	10/05/00	
		SC	REVISION:	CHECKED BY:	
		B1	REVISION:	DATE:	
			SC	03/25/09	
<p>5301 SAWYER AVENUE BOISE, ID 83714 PHONE: (208) 375-5000 www.hydroblend.com</p> <p>HYDRO-BLEND</p> <p>6850-A-V, VM</p>					

PART NO.	DESCRIPTION	QTY.
274-4	Tee - 3/4 FNPT x 3/4 FNPT x 3/4 FNPT - Sch 80 PVC	1
280	Clamp, Hose - SAE #8 - SST	4
280-02	Clamp, Hose - SAE #16 - SST	2
288-EL-5,000	Suction Tube - Nylon Reinforced	1
288-EL-9,000	Suction Tube - Nylon Reinforced	1
290-6	Barb Fitting - Straight - 3/4 MNPT x 1/2 HB - Sch 80 PVC	2
290-7	Barb Fitting - Straight - 3/4 MNPT x 1.0 HB - Sch 80 PVC	1
2882	Suction Tube - Nylon Reinforced - 6FT	1
9564-750-V	Foot Valve Assembly - PVC - 3/4 FNPT - Viton Seals	1



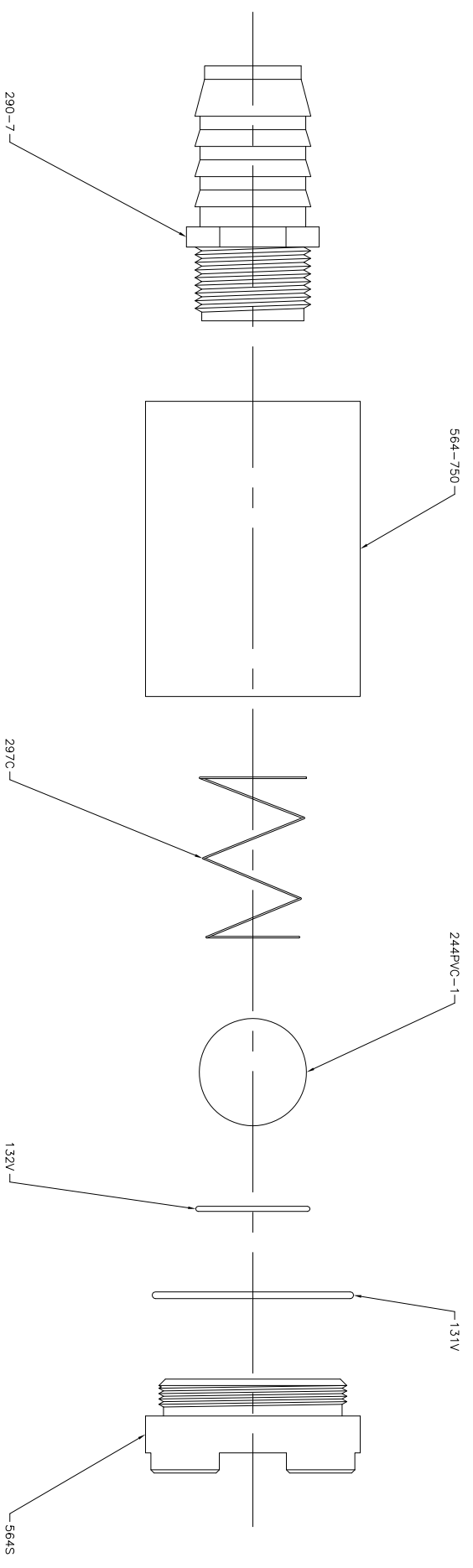
C:\AUTOCAD\9500M\Assembly\9288-V.dwg

SCALE:	SHEET:	DATE:
1:3	1 of 1	01/25/02
DRAWN BY:	CHECKED BY:	
SC	DK	
SERIES:	DESCRIPTION:	PART NUMBER:
	SUCTION TUBE ASSY.	9288-V
REVISION:	REvised BY:	DATE:
	SC	12/14/10



HYDRO-BLEND
5301 SAWYER AVENUE BOISE, ID 83714
PHONE: (208) 375-5000 www.hydroblend.com

PART NO.	DESCRIPTION	QTY.
131V	O'ring - 1-3/4 ID x 1-7/8 OD x 1/16 CS - 75 Brn Viton	1
132V	O'ring - 7/8 ID x 1-1/16 OD x 3/32 CS - 75 Brn Viton	1
244PVC-1	Ball - 1.0 DIA - Ground - PVC	1
290-7	Barb Fitting - Straight - 3/4 MNPT x 1.0 HB - Sch 80 PVC	1
297C	Spring - Hastalloy C-276	1
564-750	Foot Valve Body - 3/4 FNPT - PVC	1
564S	Foot Valve Seat - PVC	1



SCALE:	1:1.5	SHEET:	1 of 1	DATE:	10/28/05
DESIGNER:	SC	CHECKED BY:	DK		
SERIES:	SC	DESCRIPTION:	FOOT VALVE ASSY.		
REVISION:	SC	REvised BY:	SC	DATE:	03/24/09

C:\AUTOCAD\9590M\Assembly\9564-750-1.dwg

HYDRO-BLEND

5301 SAWYER AVENUE BOISE, ID 83714
 PHONE: (208) 375-5000 www.hydroblend.com

9564-750-V