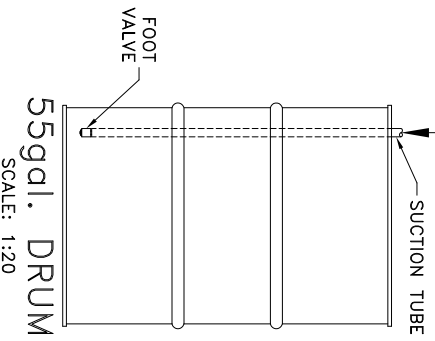
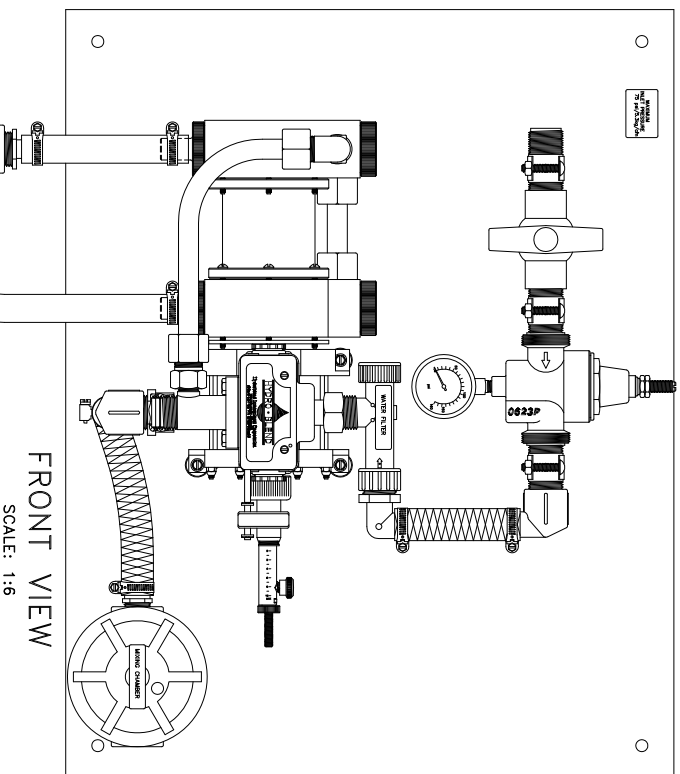
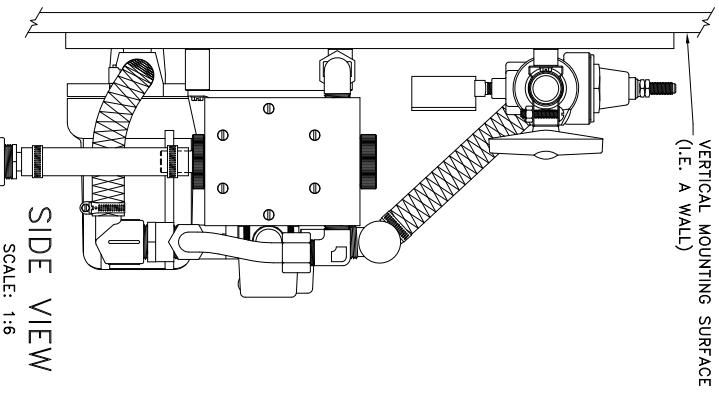


NOTE: HYDRO-BLEND VERTICAL MOUNT SYSTEM PART NUMBERS CONTAIN THE ABBREVIATION "VM"
 THIS ABBREVIATION DENOTES THE SYSTEMS MOUNTING ORIENTATION (SEE PACKING SLIP FOR PUMP NUMBER)
VM = VERTICAL MOUNT - DESIGNED TO MOUNT ON A VERTICAL SURFACE (I.E. A WALL)



SCALE:	SHEET:	DATE:
NOTED	1 of 1	04/18/08
DRAWN BY:	CHECKED BY:	
SC	DK	
SERIES:	DESCRIPTION:	
REVISION:	REvised BY:	DATE:
	SC	06/12/13

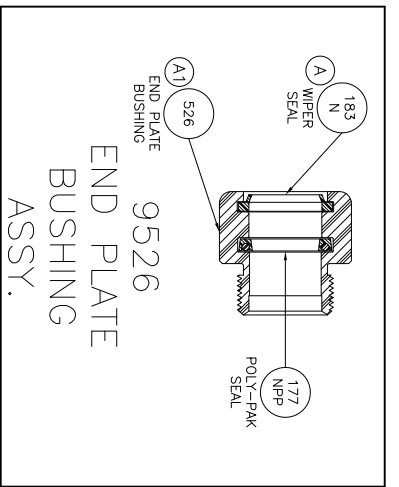
C:\AUTOCAD\CADWIN\Paper-Work\Mounting-Instructions_087-(850)-VM-Mounting-Instructions.dwg



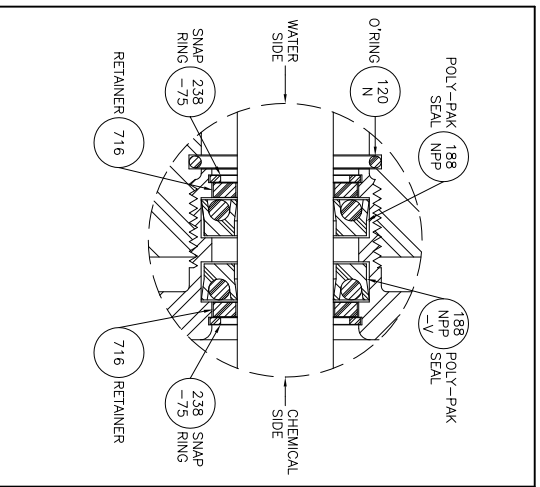
5301 SAWYER AVENUE BOISE, ID 83714
 PHONE: (208) 375-5000 www.hydroblend.com

PART NUMBER:
MOUNTING INSTRUCTIONS
 -087-
VERTICAL MOUNT


- REVISION:
- (A) WAS 178N DOUBLE LIP WIPER, 03/25/02.
 - (A1) WIPER SEAL GROOVE DIM. CHANGE, 03/25/02.
 - (B) ADDED O'RING COUNTER BORE TO TOP OF ENDPLATE, 10/17/07.
 - (B1) WAS 112N O'RING, 10/17/07.



DETAIL A
SCALE: 1:2

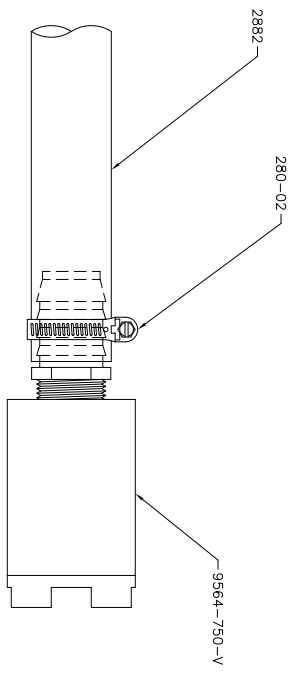
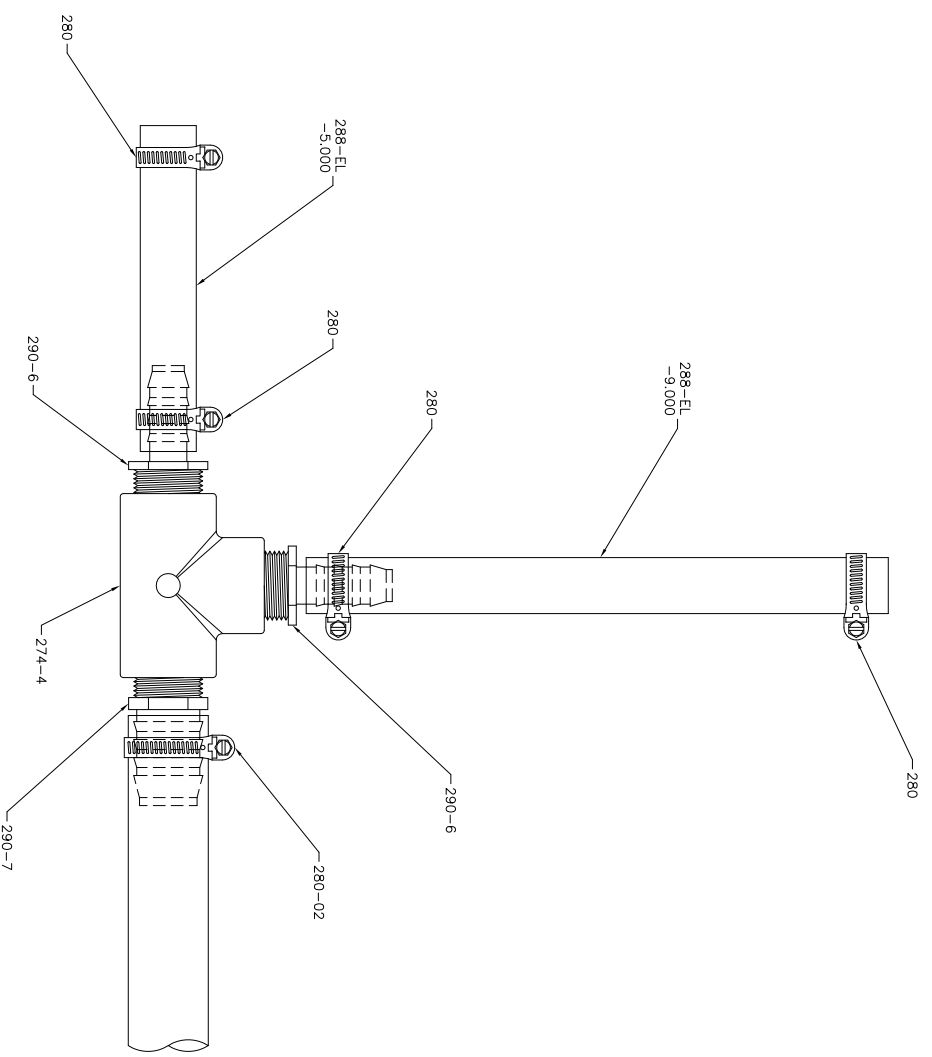


DETAIL D
SCALE: 1:1

SHIPPING INFORMATION: SMALL CROWN SYSTEM BOX = 001-5 (20 x 15 x 15) FOAM PACKAGED HYDRO-BLEND STAMP LOGO MODEL NO. SERIAL NO. STICKER LOWER LEFT HAND CORNER OF BOX		SUCTION TUBE ASSY NO. = 9288-V		OPERATING MANUAL REQUIRED PUMP SCHEMATIC REQUIRED 9288-V SCHEMATIC REQUIRED 9364-750-V FOOT VALVE ASSY SCHEMATIC REQUIRED	
SCALE:	SHEET:	DATE:	NOTED:	DATE:	DATE:
	2 of 2	10/05/00			
DESIGNER:	CHECKED BY:	DESCRIPTION:	DESIGNER:	CHECKED BY:	DESCRIPTION:
7 GPM	DK	8502.			
REVISION:	REVISION BY:	DATE:	REVISION:	REVISION BY:	DATE:
B1	SC	03/25/09			
					
5301 SAWYER AVENUE BOISE, ID 83714 PHONE: (208) 375-5000 www.hydroblend.com					
PART NUMBER: 6850-A-V, VM					

C:\AUTOCAD\PROGRAMS-6-Series-Pumps\7mm\83\6850-A-V.VM.dwg

PART NO.	DESCRIPTION	QTY.
274-4	Tee - 3/4 FNPT x 3/4 FNPT x 3/4 FNPT - Sch 80 PVC	1
280	Clamp, Hose - SAE #8 - SST	4
280-02	Clamp, Hose - SAE #16 - SST	2
288-EL-5,000	Suction Tube - Nylon Reinforced	1
288-EL-9,000	Suction Tube - Nylon Reinforced	1
290-6	Barb Fitting - Straight - 3/4 MNPT x 1/2 HB - Sch 80 PVC	2
290-7	Barb Fitting - Straight - 3/4 MNPT x 1.0 HB - Sch 80 PVC	1
2882	Suction Tube - Nylon Reinforced - 6FT	1
9564-750-V	Foot Valve Assembly - PVC - 3/4 FNPT - Viton Seals	1



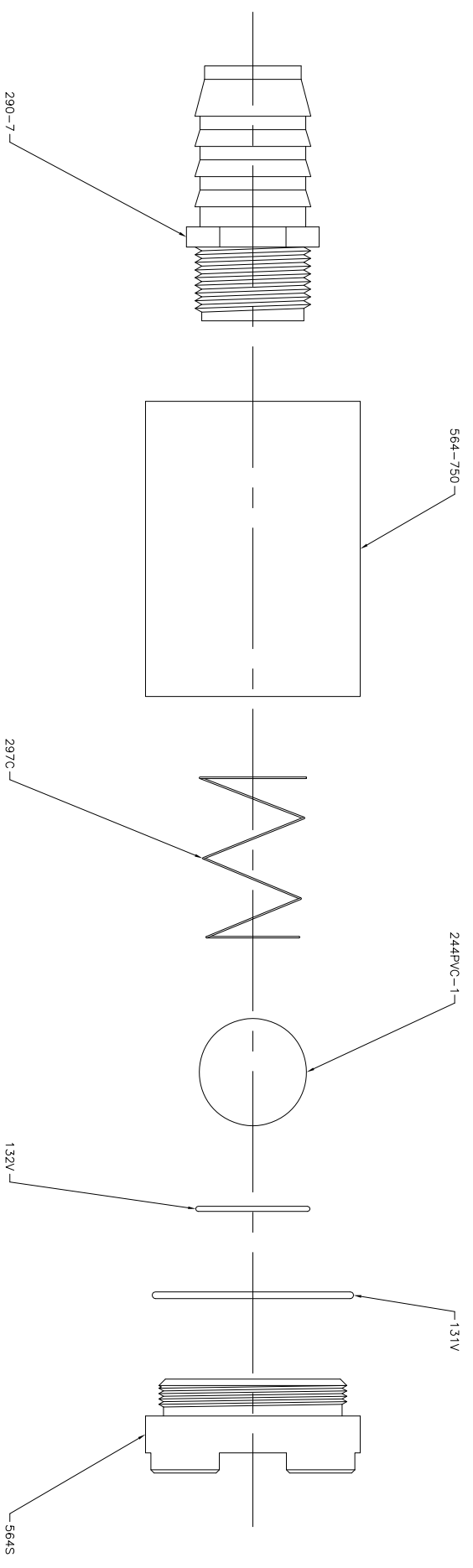
C:\AUTOCAD\9560M\Assembly\9288-V.dwg

SCALE:	SHEET:	DATE:
1:3	1 of 1	01/25/02
DRAWN BY:	CHECKED BY:	
SC	DK	
SERIES:	DESCRIPTION:	
	SUCTION TUBE ASSY.	
REVISION:	REvised BY:	DATE:
	SC	12/14/10

HYDRO-BLEND
5301 SAWYER AVENUE BOISE, ID 83714
PHONE: (208) 375-5000 www.hydroblend.com

9288-V

PART NO.	DESCRIPTION	QTY.
131V	O'ring - 1-3/4 ID x 1-7/8 OD x 1/16 CS - 75 Brn Viton	1
132V	O'ring - 7/8 ID x 1-1/16 OD x 3/32 CS - 75 Brn Viton	1
244PVC-1	Ball - 1.0 DIA - Ground - PVC	1
290-7	Barb Fitting - Straight - 3/4 MNPT x 1.0 HB - Sch 80 PVC	1
297C	Spring - Hastalloy C-276	1
564-750	Foot Valve Body - 3/4 FNPT - PVC	1
564S	Foot Valve Seat - PVC	1



SCALE:	1:1.5	SHEET:	1 of 1	DATE:	10/28/05
DRAWN BY:	SC	CHECKED BY:	DK		
SERIES:	SC	DESCRIPTION:	FOOT VALVE ASSY.		
REVISION:	SC	REvised BY:	SC	DATE:	03/24/09

C:\AUTOCAD\9560M\Assembly\9564-750-1.dwg

HYDRO-BLEND

5301 SAWYER AVENUE BOISE, ID 83714
 PHONE: (208) 375-5000 www.hydroblend.com

9564-750-V