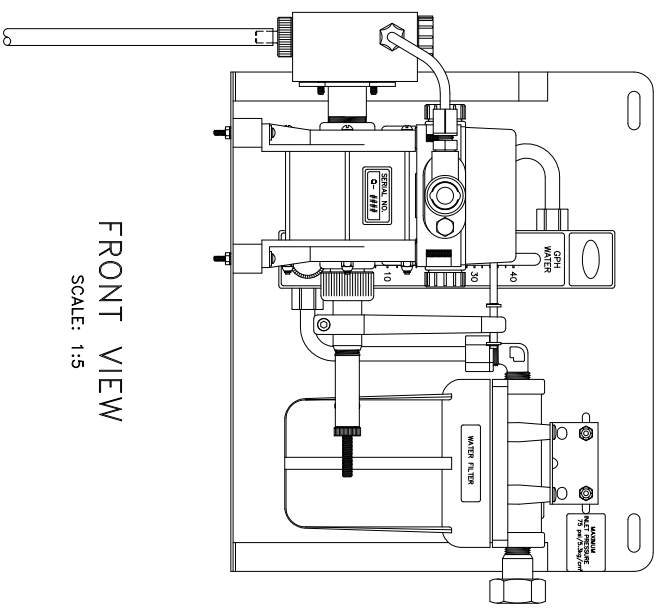
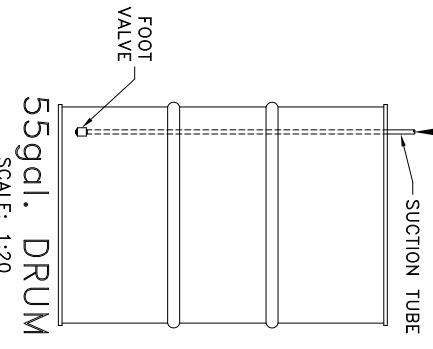
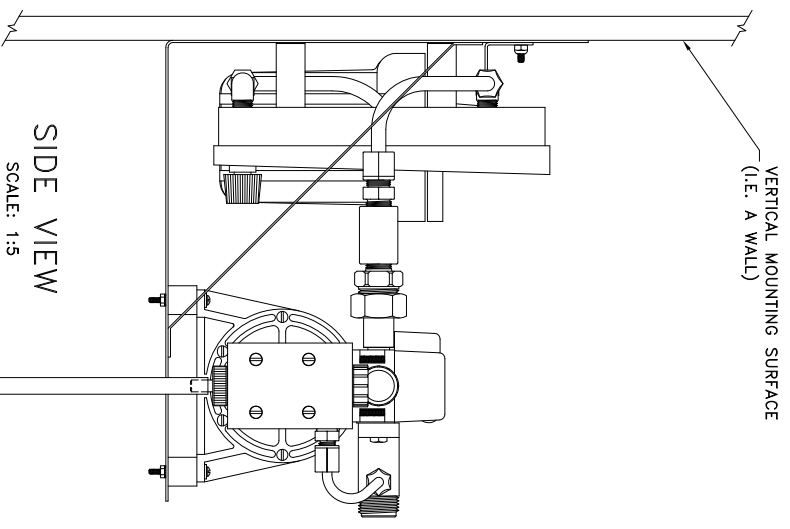

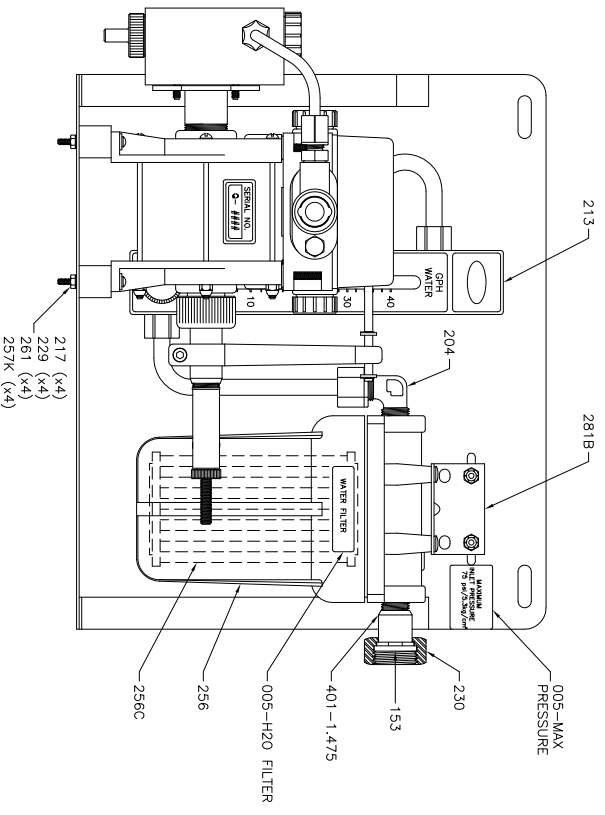
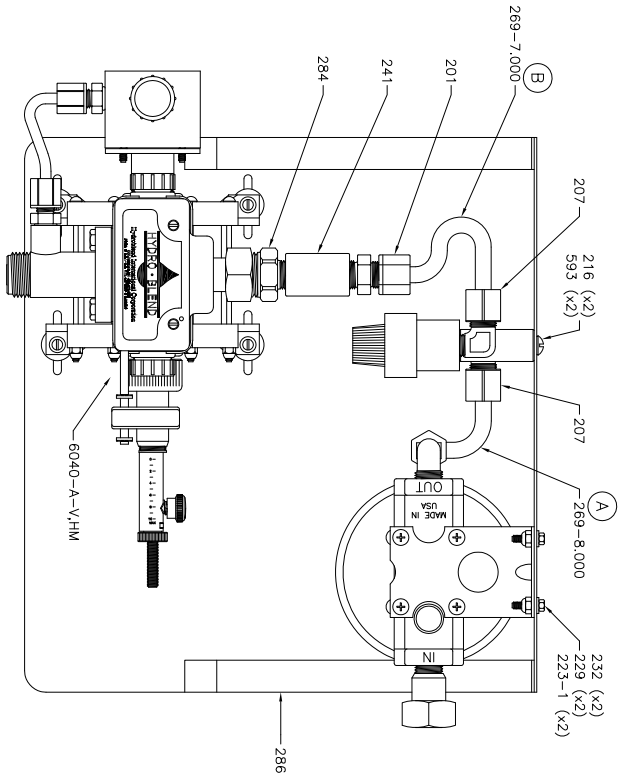


NOTE: HYDRO-BLEND VERTICAL MOUNT SYSTEM PART NUMBERS CONTAIN THE ABBREVIATION "VM"
 THIS ABBREVIATION DENOTES THE SYSTEMS MOUNTING ORIENTATION (SEE PACKING SLIP FOR PUMP NUMBER)

VM = VERTICAL MOUNT - DESIGNED TO MOUNT ON A VERTICAL SURFACE (I.E. A WALL)



SCALE:	SHEET:	DATE:	C:\MUNDO\GROW\Paper-Mat\Mounting-Instructions\IS3-VM-Mounting-Instructions.dwg	
NOTED	1 of 1	01/13/09		
DRAWN BY:	CHECKED BY:			
SC	DK			
SERIES:	DESCRIPTION:			
REVISION:	REvised BY:	DATE:		
			 HYDRO-BLEND 5301 SAWYER AVENUE BOISE, ID 83714 PHONE: (208) 375-5000 www.hydroblend.com MOUNTING INSTRUCTIONS -IS3- VERTICAL MOUNT	




PART NO.	DESCRIPTION	QTY.
005-H2O FILTER	Sticker - Water Filter	1
005-MAX PRESSURE	Sticker - Water Inlet - Maximum Inlet Pressure	1
153	Hose Washer - 3/4-GHT - Red Vinyl	1
201	Jaco Male Connector - 3/8 Tube OD - 3/8 MNPT - Polypro	1
204	Jaco Male Elbow - 3/8 Tube OD - 3/8 MNPT - Polypro	1
207	Jaco Male Elbow - 3/8 Tube OD - 1/4 MNPT - Polypro	2
213	Flow Meter - 4/40 GPH - 70 PSI	1
216	Screw - 1/4-20 x 2.0 - Round Head SLTD - 18-8 SST	2
217	Screw - 6-32 x 1-1/2 - Round Head SLTD - 18-8 SST	4
223-1	Nut - Hex Nylock - Wd 11/32 x Ht Full - 8-32 - Plated	2
229	Washer - .174 ID x 3/8 OD x .031 Thick - SST	6
230	Nut - Garden Hose - Wd 1-1/4 x Ht .630	1
232	Bolt - 3/4-11.5 NH - Electroless Nickel Plated Brass	2
241	Coupler - 3/8 FNPT - 1-1/2 Long - Sch 80 PVC	1
256	Housing, Water Filter - 3/8 FNPT	1
256C	Filter Cartridge - 30 Micron	1
257K	Nut - Hex Keeps with Tooth Washer - Wd 5/16 x Ht .105 - 6-32 - Plated	4
261	Foot - Rubber	4
269-7-000	Injection Tube	1
269-8-000	Injection Tube	1
281B	Mounting Bracket - Ametek Filter Housing	1
284	Adapter - 3/8 MNPT x 3/4 MGHT - SST	1
286	Shell - 13.0 x 12.0 x 11.0 - (IS3) - SST	1
401-1.475	Inlet Fitting - 3/8 MNPT - SST	1
593	Spacer - Acetal	2
6040-A-V, VM	Hydro-Blend Proportioner	1

REVISION:
 (A) WAS 269-6.00 STARTING WITH SERIAL NO. (V-02138 THRU V-02140), 08/04/98.
 (B) WAS 269-6.00 STARTING WITH TWO SYSTEMS WITHOUT PUMPS, 09/22/98.

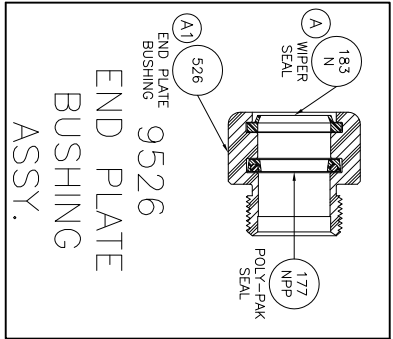
SHIPPING INFORMATION:
 SMALL CROWN SYSTEM BOX = 001-5
 FOAM PACKAGED (20 x 15 x 15)
 HYDRO-BLEND STAMP LOGO
 MODEL NO. SERIAL NO. STICKER
 LOWER LEFT HAND CORNER OF BOX

FOOT VALVE NO. = 9402-250
 SUCTION TUBE NO. = 265
 OPERATING MANUAL REQUIRED
 PUMP SCHEMATIC REQUIRED
 SYSTEM SCHEMATIC REQUIRED

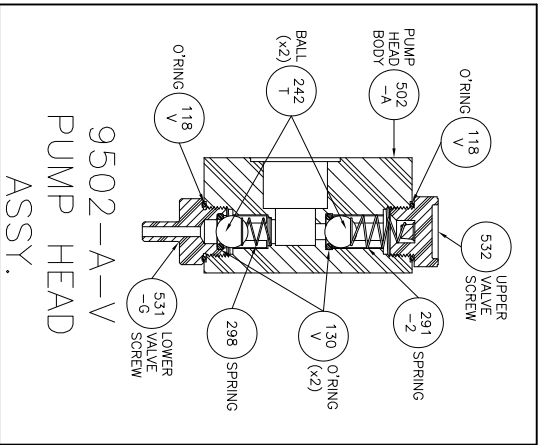
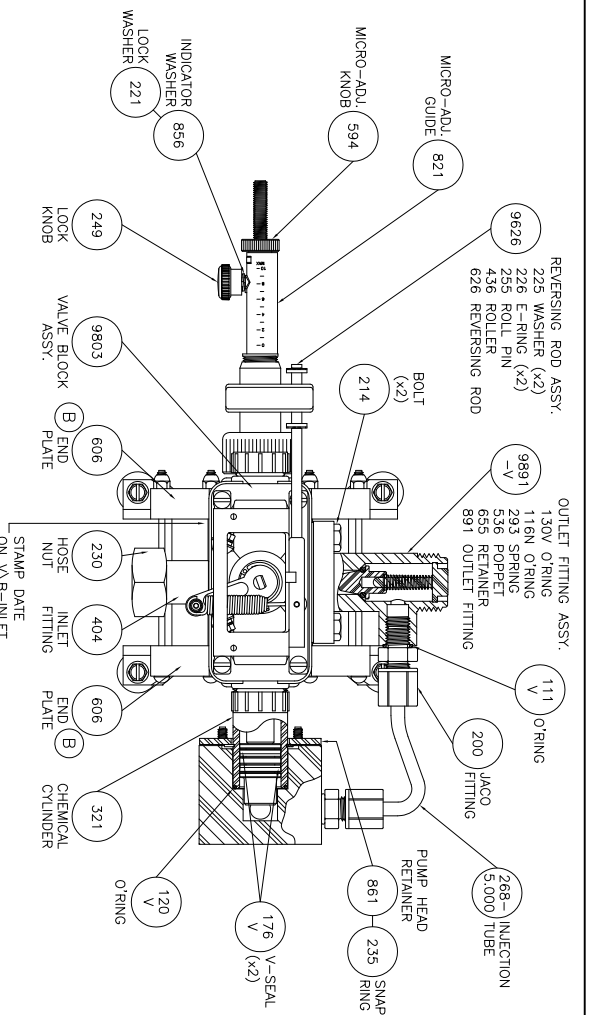
SCALE: 1:4.5	SHEET: 1 of 1	DATE: 07/02/98
FORM NO. SC	CHECKED BY: DK	
SERIES: 7 GPM	DESCRIPTION: IS3-SYSTEM	
REVISION: B	REvised BY: SC	DATE: 01/13/09


HYDRO-BLEND
 5301 SAWYER AVENUE BOISE, ID 83714
 PHONE: (208) 375-5000 www.hydroblend.com
IS3-6040-A-V, VM

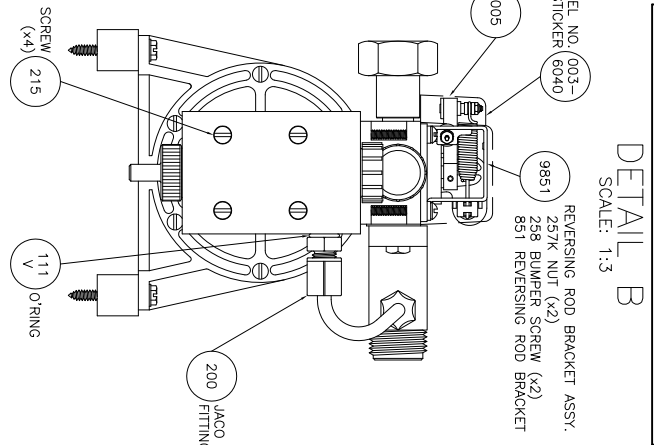
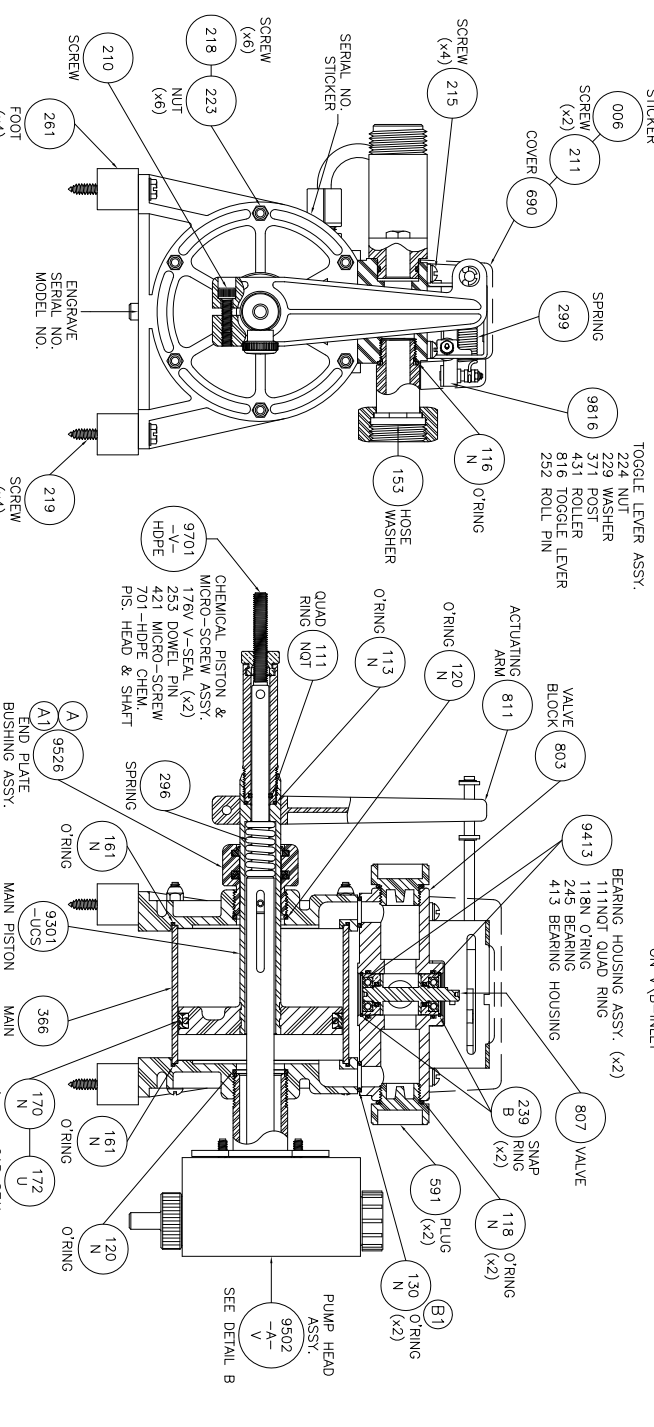
©Autopack/CPOM/Systems/IS3-6040-A-V, VM/98



DETAIL A
SCALE: 1:2



DETAIL B
SCALE: 1:3



DETAIL A
SCALE: 1:3

REVISION: A WAS 178N DOUBLE LIP WIPER, 03/25/02. A1 WIPER SEAL GROOVE DIM. CHANGE, 03/25/02. B ADDED O-RING COUNTER BORE TO TOP OF ENDPLATE, 10/17/07. B1 WAS 112N O-RING, 10/17/07.

SHIPPING INFORMATION:
SMALL BOX = 001-1
TOP INSERT = 001-1AA
MIDDLE INSERT = 001-1AB
BOTTOM INSERT = 001-1AC
HYDRO-BLEND STAMP LOGO
MODEL NO. SERIAL NO. STICKER
LOWER LEFT HAND CORNER OF BOX

FOOT VALVE NO. = 9402-250
SUCTION TUBE NO. = 265
OPERATING MANUAL REQUIRED
PUMP SCHEMATIC REQUIRED

SCALE:	1:3.5	SHEET:	1 of 1	DATE:	08/12/99
DRAWN BY:	SC	CHECKED BY:	DK		
SERIES:	7 GPM	DESCRIPTION:	4oz.		
REVISION:	B1	REvised BY:	SC	DATE:	01/12/09
		5301 SAWYER AVENUE BOISE, ID 83714 PHONE: (208) 375-5000 www.hydroblend.com			
6040-A-V, HM					