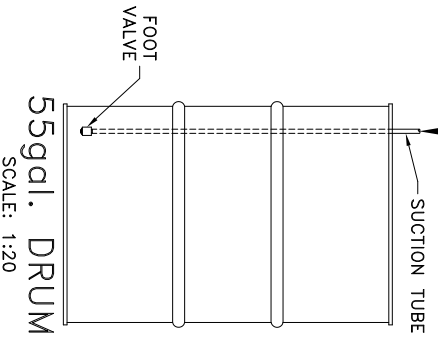
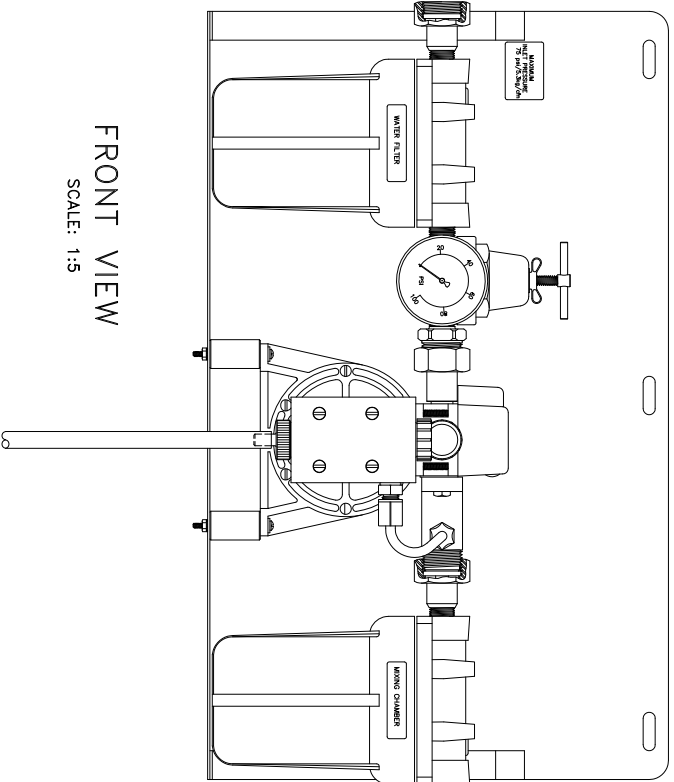
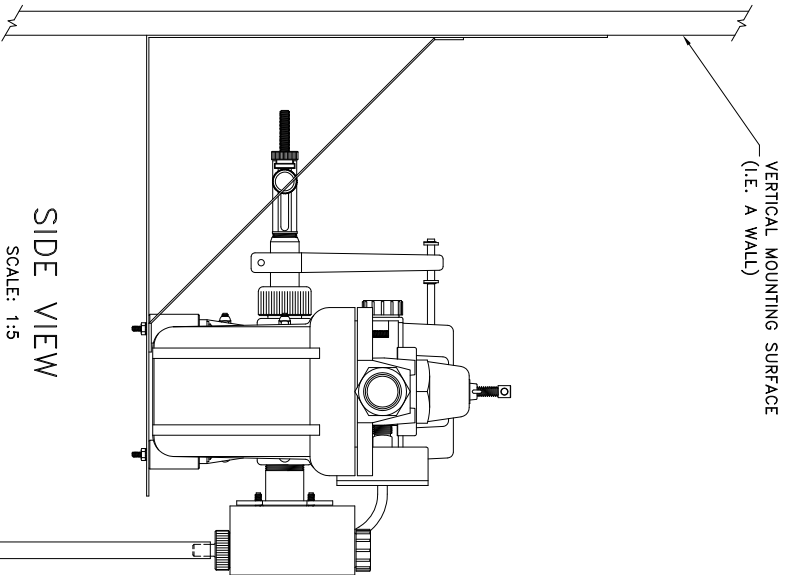

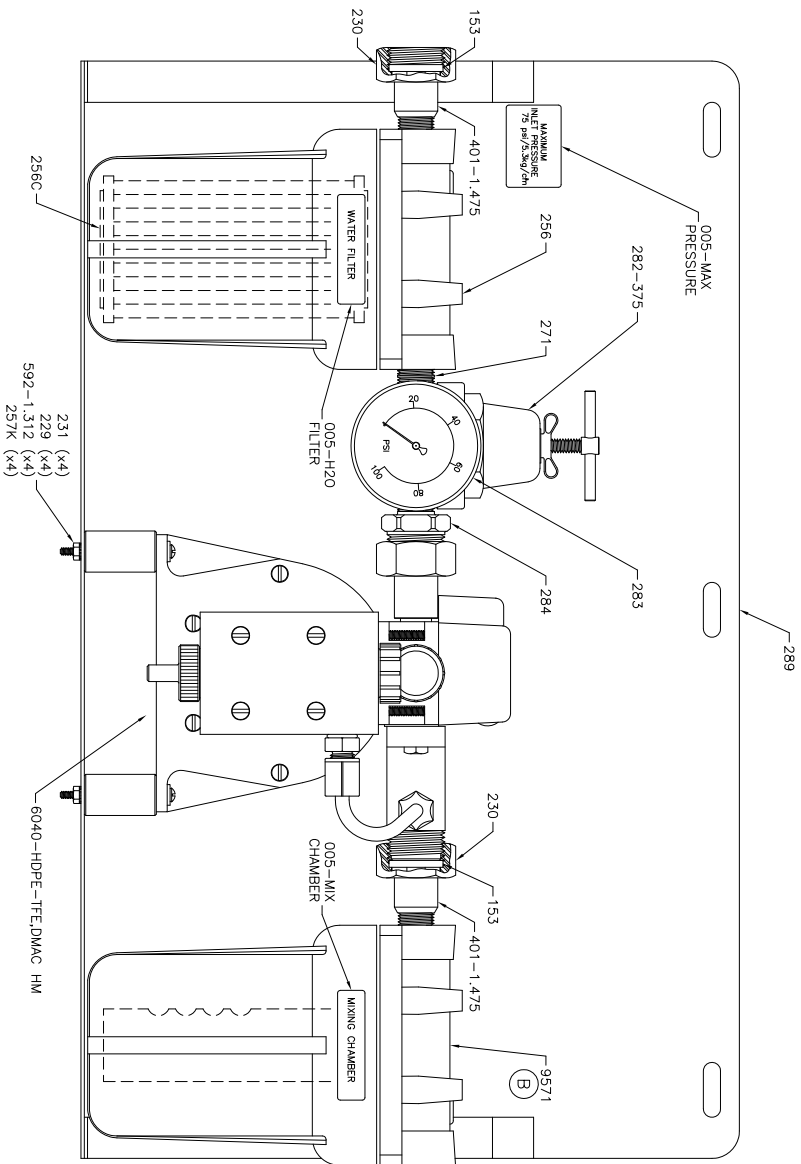


NOTE: HYDRO-BLEND VERTICAL MOUNT SYSTEM PART NUMBERS CONTAIN THE ABBREVIATION "VM"
 THIS ABBREVIATION DENOTES THE SYSTEMS MOUNTING ORIENTATION (SEE PACKING SLIP FOR PUMP NUMBER)
VM = VERTICAL MOUNT - DESIGNED TO MOUNT ON A VERTICAL SURFACE (I.E. A WALL)



SCALE:	SHEET:	DATE:	C:\MUNDOO\GROWN\Paper-MW-Mounting-Instructions\LS1-M-Mounting-Instructions.dwg	
NOTED	1 of 1	07/10/07		
DRAWN BY:	CHECKED BY:			
SC	DK			
SERIES:	DESCRIPTION:			
REVISION:	REvised BY:	DATE:		
	SC	02/23/09		
			 5301 SAWYER AVENUE BOISE, ID 83714 PHONE: (208) 375-5000 www.hydroblend.com PART NUMBER: MOUNTING INSTRUCTIONS -LS1- VERTICAL MOUNT	



PART NO.	DESCRIPTION	QTY.
005-H2O FILTER	Sticker - Water Filter	1
005-MAX PRESSURE	Sticker - Water Inlet - Maximum Inlet Pressure	1
005-MIX CHAMBER	Sticker - Mixing Chamber	1
153	Hose Washer - 3/4-GHT - Red Vinyl	2
229	Washer - .174 ID x 3/8 OD x .031 Thick - SST	4
230	Nut - Garden Hose - Wd 1-1/4 x Ht .630 - 3/4-11.5 NH - Electroless Nickel Plated Brass	2
231	Screw - 6-32 x 2.0 - Round Head SLTD - 18-8 SST	4
256	Housing, Water Filter - 3/8 FNPT	1
256C	Filter Cartridge- 30 Micron	1
257K	Nut - Hex Keys with Tooth Washer - Wd 5/16 x Ht .105 - 6-32 - Plated	4
271	Nipple - 3/8 MNPT - 1.0 Long - SST	1
282-375	Regulator, Water Pressure - 3/8 FNPT - 1/4 FNPT Gauge Port - 10-125PSI	1
283	Gauge - 1/4 MNPT - 100PSI	1
284	Adapter - 3/8 MNPT x 3/4 MGH - SST	1
289	Shelf - 20.0 x 12.0 x 12.0 - (LS1) - SST	1
401-1.475	Inlet Fitting - 3/8 MNPT - SST	2
592-1.312	Spacer - Acetal	4
6040-HDPE-TFE, DMAC HM	Hydro-Blend Proportioner	1
9571	Mixing Chamber & Jet Assy - 3/8 FNPT	1

REVISION:
SEE SHEET 2 of 2

SHIPPING INFORMATION:
LARGE CROWN SYSTEM BOX = 001-6
(21-3/8 x 15-5/8 x 15-3/4)
FOAM PACKAGED

HYDRO-BLEND STAMP LOGO
MODEL NO. SERIAL NO. STICKER
LOWER LEFT HAND CORNER OF BOX

FOOT VALVE NO. = 9402-250
SUCTION TUBE NO. = 265
OPERATING MANUAL REQUIRED
PUMP SCHEMATIC REQUIRED

SCALE	SHEET	DATE
1:3.5	1 of 2	04/02/98
FORM NO.:	CHECKED BY:	
SC	DK	
SERIES:	DESCRIPTION:	
7 GPM	4oz.	
DESIGN:	DATE:	
D	03/03/09	

C:\Autocad\crown\System\LS1-6040-HDPE-TFE,DMAC VM.dwg



5301 SAWYER AVENUE BOISE, ID 83714
PHONE: (208) 375-5000 www.hydroblend.com

LS1-6040-HDPE
-TFE,DMAC VM

REVISION:


A, B, & C REFLECT DESIGN CHANGES MADE, STARTING WITH PUMP SERIAL NO. XXXXXX, 01/25/99.

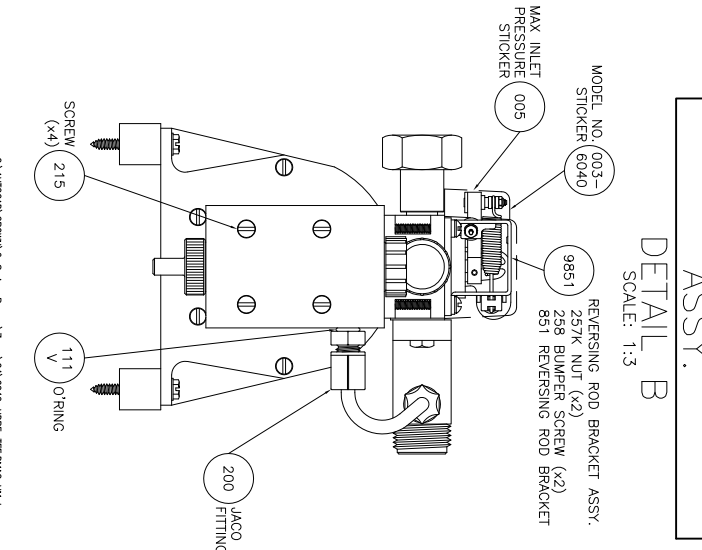
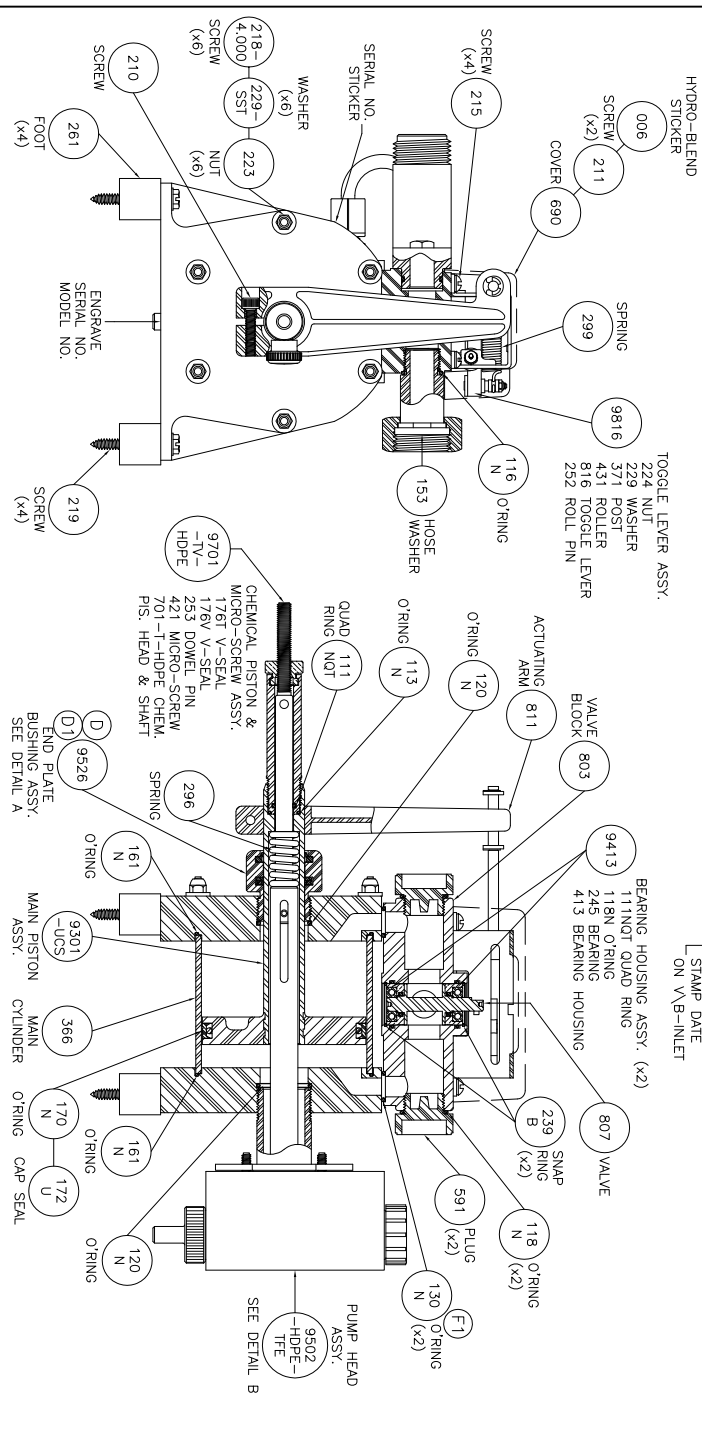
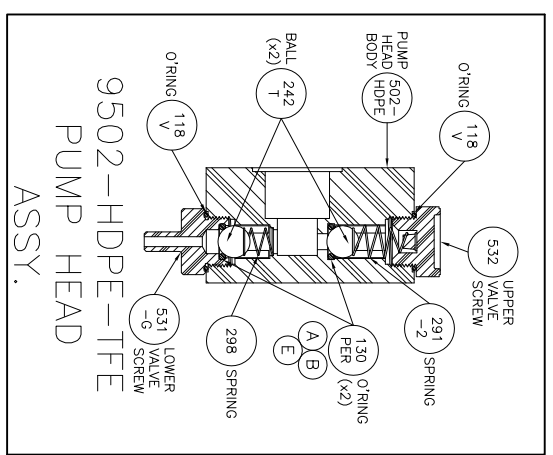
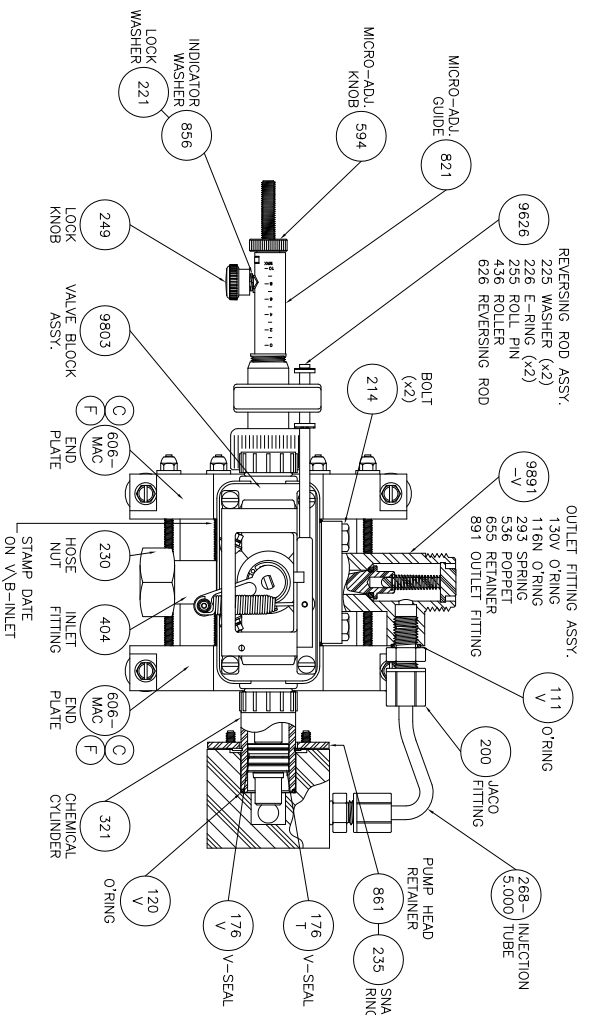
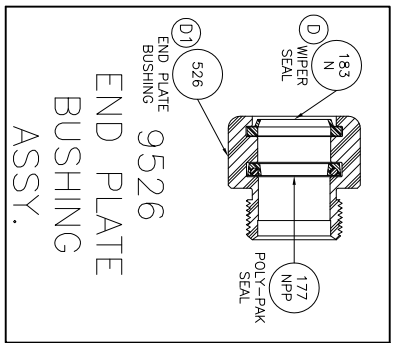
- (A) REMOVED PART NO.
206 JACO MALE CONNECTOR
220 SCREW (x2)
268-8.000 INJECTION TUBE
271 PVC 3/8 NPT CLOSE NIPPLE (x2)
273 3/8 NPT THREADED NIPPLE 4" LONG
274 3/8 NPT PVC THREADED TEE
275 3/8 NPT PVC THREADED ELBOW (x3)
276 3/8 NPT PVC THREADED NIPPLE 6" LONG
9576-3 PVC MIXING CHAMBER ASSEMBLY
LS040 4oz. LUBE STYLE PUMP
CHANGES MADE, 01/25/99.

- (B) REMOVED PART NO.
256 HOUSING
571 PVC MIXING CHAMBER JET
5040 4oz. STANDARD PUMP
CHANGES MADE, 01/25/99.

- (C) PART NO. CHANGED FROM LS1-L6040 TO LS1-6040, 01/25/99.

- (D) PART NO. CHANGED FROM LS1-6040 TO LS1-LUBE SYSTEM, 08/28/06.

SHIPPING INFORMATION: LARGE CROWN SYSTEM BOX = 001-6 (21-3/8 x 15-5/8 x 15-3/4) FOAM PACKAGED HYDRO-BLEND STAMP LOGO MODEL NO. SERIAL NO. STICKER LOWER LEFT HAND CORNER OF BOX		FOOT VALVE NO. = 9402-250 SUCTION TUBE NO. = 265 OPERATING MANUAL REQUIRED PUMP SCHEMATIC REQUIRED	
SCALE:	SHEET:	DATE:	
NTS	2 of 2	04/02/98	
DRAWN BY: SC		CHECKED BY: DK	
SERIES: 7 GPM		DESCRIPTION: 4oz.	
REVISION: D	REvised BY: SC	DATE: 03/03/09	
			
5301 SAWYER AVENUE BOISE, ID 83714 PHONE: (208) 375-5000 www.hydroblend.com PART NUMBER: LS1-6040-HDPE ©D - TFE, DMAC VM			



REVISION:
SEE SHEET 2 of 2

SHIPPING INFORMATION:
SMALL BOX = 001-1
TOP INSERT = 001-1AA
MIDDLE INSERT = 001-1AB
BOTTOM INSERT = 001-1AC
HYDRO-BLEND STAMP LOGO

FOOT VALVE NO. = 9402-250
SUCTION TUBE NO. = 265
OPERATING MANUAL REQUIRED
PUMP SCHEMATIC REQUIRED

SCALE: 1:3.5
SHEET: 1 of 2
DATE: 08/12/99

DESIGNER: SC
CHECKED BY: DK
DESCRIPTION: 7 GPM
DATE: 4-02.
05/16/08



5301 SAWYER AVENUE BOISE, ID 83714
PHONE: (208) 375-5000 www.hydroblend.com

6040-HDPE-TFE,
DMAC HM

© AUTOMATIC PUMPS & SERVICES - PUNYA, YAMLOVA, HDPE-TFE, DMAC HM, 499

REVISION:

- (A) THE 130KAL (KALREZ) O'RING WAS CHANGED TO A 130PAR (PARFLUOR) V8545-75 O'RING, 02/25/00.
- (B) THE 130PAR (PARFLUOR) O'RING WAS CHANGED TO A 130SO (SOLAST) 9503 O'RING, 08/01/01.
- (C) DMAC = DELRIN MACHINED END PLATE, 11/25/01.
- (D) WAS 178N DOUBLE LP WIPER, 03/25/02.
- (D) WIPER SEAL GROOVE DIM. CHANGE, 03/25/02.
- (E) CHANGED PART NO. TO 130PER, 04/07/05.
- (F) ADDED O'RING COUNTER BORE TO TOP OF ENDPATE, 10/17/07.
- (F) WAS 112N O'RING, 10/17/07.

SHIPPING INFORMATION:

SMALL BOX = 001-1
 TOP INSERT = 001-1AA
 MIDDLE INSERT = 001-1AB
 BOTTOM INSERT = 001-1AC
 HYDRO-BLEND STAMP LOGO

MODEL NO. SERIAL NO. STICKER
 LOWER LEFT HAND CORNER OF BOX

FOOT VALVE NO. = 9402-250
 SUCTION TUBE NO. = 265
 OPERATING MANUAL REQUIRED
 PUMP SCHEMATIC REQUIRED

SCALE:	NTS	SHEET:	2 of 2	DATE:	08/12/99
FORM BR:	SC	CHECKED BY:	DK		
SERIES:	7 GPM	DESCRIPTION:	4oz.		
REVISION:	F1	REvised BY:	SC	DATE:	05/16/08

C:\AUTOCAD\PROGRAMS-Serial-Number\7mm\0A\600-HDPE-TFE\DMAC HM.dwg



5301 SAWYER AVENUE BOISE, ID 83714
 PHONE: (208) 375-5000 www.hydroblend.com

PART NUMBER:
 6040-HDPE-TFE,
 DMAC HM